



# 210C

## LANDSCAPE LOADER



Model shown may include options

**SAE Net  
Horsepower**

60 hp N.A.  
(45 kW)

**Displacement**

239 cu. in.  
(3.917 L)

**Loader Lift**

4,630 lb.  
(2100 kg)

## ENGINE

John Deere engineered and manufactured. Replaceable wet-type cylinder liners provide superior heat dissipation, longer life. High-strength alloy head has replaceable valve seat inserts. The forged steel, 5-main-bearing crankshaft is statically and dynamically balanced for smooth operation. Cast aluminum pistons provide good heat transfer and pistons are sprayed with cooling oil for longer life.

**Engine:** John Deere 4039D

Rated power at 2,200 rpm.....	60 SAE net hp (45 kW)
	63 SAE gross hp (47 kW)
Cylinders .....	4
Displacement .....	239 cu. in. (3.917 L)
Fuel consumption, typical ...	1.12 to 1.75 gal./hr. (4.25 to 6.6 L/h)
Torque rise, 20 percent .....	172 lb.-ft. (233 Nm)
Lubrication .....	pressure system w/full-flow filter and cooler
Air cleaner .....	dual stage dry type with safety element and precleaner
Electrical system .....	12 volt with 95-amp alternator
Sucker-type cooling fan .....	

## TRANSMISSION

John Deere designed and built 4-speed helical gear, synchronized collar shift transmission with hydraulic reverser. Uses single stage, dual phase 11-inch (280 mm) torque converter with 2.78:1 stall ratio.

## TRAVEL SPEEDS

Gear	Forward		Reverse		
	mph	(km/h)	mph	(km/h)	
With 16.9-24 rear tires	1	3.4	5.5	3.3	5.3
	2	5.7	9.2	5.6	9.0
	3	12.3	19.8	12.2	19.6
	4	20.1	32.3	18.0	29.0

## FINAL DRIVES

Heavy-duty, inboard-mounted planetary type. Evenly distribute axle shock loads over three gears that run in a cooling oil bath.

## BRAKES

**Hydraulic wet disk service brakes** are mounted inboard and are pressure cooled and lubricated. They're self-adjusting and self-equalizing. Individual pedals can be applied together or separately. **Parking/emergency brake** is an independent system that is spring-applied, hydraulically released, and controlled by an electric switch on the control console. Automatically neutralizes reverser when parking brake is applied. A mechanical V-groove band applies pressure on differential ring gear. All brakes conform to SAE J1473.

## CAPACITIES

Fuel tank .....	23 gal. (87 L)
Engine coolant .....	17 qt. (16 L)
Engine oil including filter .....	9 qt. (8.5 L)
Torque converter and reverser system .....	8 qt. (7 L)
Hydraulic system .....	16 gal. (60 L)

## STEERING

Hydrostatic power steering gives superior control at all speeds. Excellent steering torque allows easy maneuvering with heavy loads. Power steering conforms to SAE J1151 and emergency steering to SAE J53.

Non-powered axle	
Curb turning radius with brakes .....	12 ft. 0 in. (3.67 m)
without brakes .....	13 ft. 2 in. (4.0 m)
Bucket clearance circle with brakes .....	32 ft. 5 in. (9.89 m)
without brakes .....	34 ft. 7 in. (10.55 m)
Steering wheel turns, stop to stop .....	2.2 to 2.9
Mechanical-front-wheel drive	
Curb turning radius with brakes .....	11 ft. 9 in. (3.57 m)
without brakes .....	13 ft. 5 in. (4.10 m)
Bucket clearance circle with brakes .....	30 ft. 9 in. (9.38 m)
without brakes .....	34 ft. 3 in. (10.44 m)
Steering wheel turns, stop to stop .....	2.5
Axle oscillations stop to stop, both axles .....	22 degrees

Axle ratings:	Static	Dynamic	SAE J43
Front .....	36,300 lb. (16,400 kg)	36,300 lb. (16,400 kg)	13,400 lb. (6,000 kg)
Rear .....	41,100 lb. (18,600 kg)	54,800 lb. (24,800 kg)	11,430 lb. (5,100 kg)

## HYDRAULICS

System .....	open center
Pressure, main relief .....	2,700 psi (18,620 kPa)
Pump .....	gear type
Flow at 2,200 rpm .....	24 gpm (91 L/min.)
Filter, return oil .....	10 micron, spin-on replaceable element

## CYLINDERS

	Bore in. (mm)	Stroke in. (mm)	Rod in. (mm)
Loader boom (2) .....	2.76 70	29.8 757	1.77 45
Loader bucket (1) .....	2.76 70	28.1 715	1.75 40
Steering (1)			
regular axle .....	2.00 51	9.5 241	1.00 25
Steering (1) MFWD .....	2.36 60	7.9 201	1.25 32

## TIRES

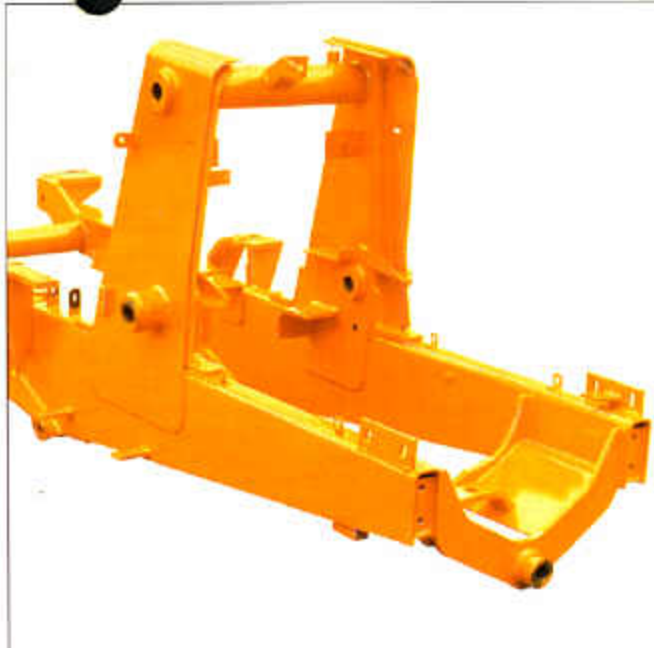
Rear	Front
16.9-24, 8 PR, R4 .....	11L-15, 8 PR
With mechanical-front-wheel drive	
16.9-24, 8 PR, R4 .....	12-16.5, 8 PR

## OPERATING WEIGHTS

210C Landscape Loader w/o Gannon	
three-point hitch .....	7,600 lb. (3,447 kg)
Mechanical-front-wheel drive adds .....	190 lb. (86 kg)
See backhoe and loader buckets for bucket weights.	

NOTE: Unless equipped with a backhoe, this machine **requires** rear counterweight. See your John Deere dealer for rear attachments and counterweights.

Specifications and design subject to change without notice. Wherever applicable, specifications are in accordance with SAE standards. Except where otherwise noted, these specifications are based on a unit with 16.9-24, 8 PR rear tires, 11L-15, 8 PR front tires, and 1.12 cu. yd. (0.86 m<sup>3</sup>) loader bucket.



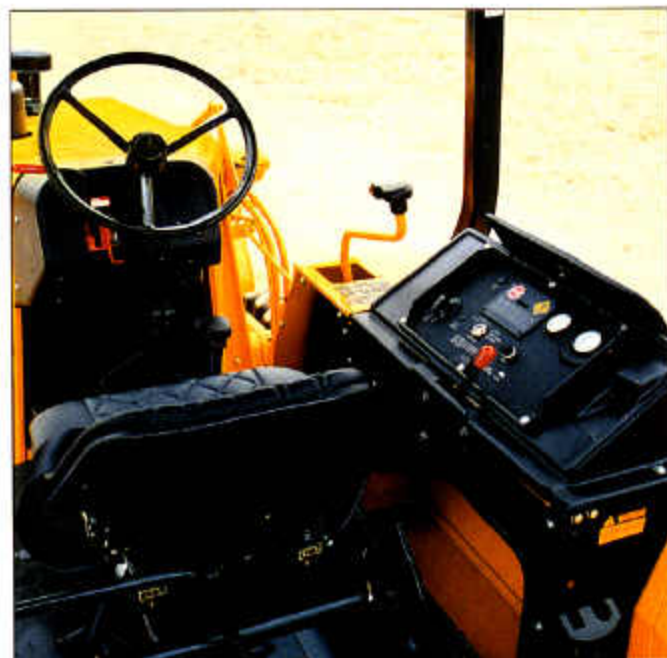
## MAINFRAME

All drivetrain components are mounted independently to the massive unitized mainframe where they are isolated from working stress and shock loads. Each drive train component can be removed independently of the others to speed repairs, reduce downtime.



## FRONT-WHEEL DRIVE

This rugged, industrial-duty axle can be engaged under load on-the-go. Limited slip differential is offset to provide maximum ground clearance. The axle's sealed design prevents entry of water and mud. Turning radius slightly more than two-wheel drive.



## OPERATOR'S STATION

ROPS canopy is standard equipment. Working height is 8 ft. 8 in. (2.55 m). A low ROPS option reduces height to 8 ft. 4 in. (2.44 m), facilitating work in close quarters and beneath overhangs. Audible and two-stage visible warnings alert you to potential problems.



## LOADER DESIGN

Simplified linkage and single cylinder design reduces weight and provides an unobstructed view to the bucket. Fewer pivot points and lubrication points reduce maintenance time and expense.

## ADDITIONAL STANDARD EQUIPMENT

### Engine:

John Deere Model 4039D  
3.9 liter – 60 SAE net hp  
Dual safety element dry-type  
air cleaner with prescreener  
and restriction indicator  
under hood  
Enclosed safety fan guard  
Conforms to SAE J1308  
Engine coolant –34°F (-37°C)  
Muffler, under hood, with  
vertical curved end exhaust  
stack and non-spark arresting  
Naturally aspirated  
Quick release John Deere  
fuel filter  
Spin-on engine oil filter  
Sucker-type cooling fan

### Power Train:

Electric clutch cutoff on gear  
shift and loader lever  
Engine-mounted powershift  
reverser with torque converter  
Isolation mounted to main-  
frame  
Hydraulic service brakes  
Inboard, wet disc, self adjust-  
ing and self equalizing  
Conforms to SAE J1473,  
ISO3450  
Hydrostatic power steering  
with emergency manual mode  
Conforms to SAE J1151, J53  
Manual F-N-R control with  
single lever and neutral  
safety switch interlock

Oil-to-air cooler  
Hydraulic system  
Reverser/torque converter  
Parking/emergency brakes  
Inboard wet V-groove  
Independent of service brakes  
Conforms to SAE J1473,  
ISO3450

Synchronized transmission in  
3rd and 4th gears

### Loader:

Bucket level indicator  
Hydraulic self leveling  
Less bucket with bucket pins  
Loader boom service lock  
Return to dig feature  
Single lever control with electric  
clutch cutoff switch

### Operator's Station:

Built-in operator's manual stor-  
age compartment with manual  
Electronic monitor system with  
audible and visual warning:  
Engine coolant temperature  
Engine oil pressure  
Hydraulic oil filter indicator  
Low alternator voltage  
Park brake on-off indicator  
Torque converter temperature  
Foot throttle  
Fuel gauge  
Hand throttle with fuel economy  
setting at 2,100 rpm  
Horn  
Conforms to SAE J994, J1446

Hourmeter  
Interior rearview mirror  
Conforms to SAE J985  
Key start switch with electric  
fuel shutoff  
ROPS/FOPS isolation mounted  
with steel roof  
Conforms to SAE J1040  
Left front operator access  
Non-suspension vinyl seat  
w/fore and aft adjustment  
w/o armrests  
Conforms to SAE J899  
Slip-resistant steps and  
ergonomically-located  
handholds  
Conforms to SAE J185  
2-in. (51 mm) seat belt  
Adjusts independent of seat  
position  
Conforms to SAE J386

### Lights:

One rear stop and tail  
Two front driving/working and  
one rear working halogen  
35,200 candlepower each  
Two rear reflectors  
Conforms to SAE J99

### Overall Vehicle:

Engine side shields  
One-piece unitized construction  
mainframe  
Rear fenders  
Reverse warning alarm  
Switchable to 97 DBA or  
111 DBA

Conforms to SAE J994, J1446  
Rigid supported front bumper  
Tires:

16.9-24, 8 PR, R4 tube-  
less rear  
81 in, overall width  
11L-15, 8 PR, F3 tube-  
less front  
23-gal. (51 L) fuel tank with  
built-in water strainer and  
sump with drain  
Vandal protection locking with  
start switch key for:  
Engine access doors  
Fuel filler access panel  
Instrument panel

### Electrical:

Blade-type multi-fused circuits  
Bypass start safety cover on  
starter  
95 amp alternator  
Positive terminal battery covers  
Single battery with 160 min.  
reserve capacity and 625 CCA  
12 volt system

### Hydraulics:

Circuit relief valve protection  
Independent hydraulic reservoir  
"O" ring face seal connectors  
Pressure and return lines for use  
with three-point hitch valve  
Valve not included  
10 micron spin-on hydraulic filter  
24 gpm engine-mounted gear  
pump – open center

## OPTIONAL OR SPECIAL EQUIPMENT

### Engine:

Electric ether starting aid  
Engine coolant heater  
1,000 watts

### Power Train:

Mechanical-front-wheel drive  
Drive shaft guard  
Heavy-walled drive shaft  
Limited slip differential  
Manual on/off control  
Sealed axle

### Backhoe:

Alternate stabilizer feet  
Auxiliary backhoe hydraulics  
for breaker, compactor  
Backhoe bucket coupler for:  
"C" and "D" series John  
Deere buckets  
Case buckets

Backhoe controls  
Case pattern with three-lever  
foot swing  
Ford pattern with four levers  
SAE excavator two lever  
pattern\*

### Extendable dipperstick:

Four-foot extension  
Full-width wear strips  
Extra function backhoe valve  
with pedal or lever

Heavy-duty and extra heavy-  
duty backhoe buckets  
Built-in lift loop

Light materials/snow loader  
buckets\*

SAE controlled lowering device\*  
Stabilizer cylinder guards\*

### Loader:

Alternate buckets  
Long-lip configuration  
Multipurpose

Auxiliary loader hydraulics  
Bolt-on auxiliary cutting edge  
Bolt-on tooth bar for loader  
buckets

Loader boom service lock\*

### Operator's Station:

Cab\*  
Economy seat, vinyl covered,  
suspension or rigid mounted

Floor mat

### Lights:

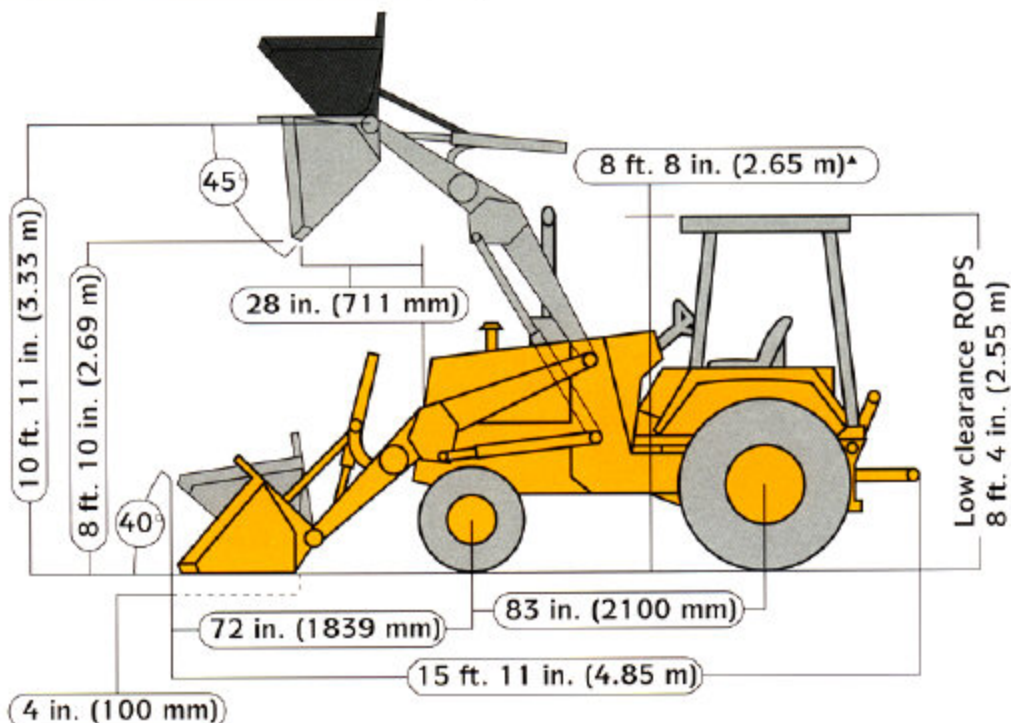
Front/rear turn signal  
Rear brake  
Rear halogen work  
Special low clearance ROPS  
Tachometer/hourmeter  
3-in. (76 mm) retractable  
seat belt  
Two additional front lights

### Overall Vehicle:

Chrome exhaust extension  
Dual batteries – 360 reserve  
1250 CCA  
Fire extinguisher  
Front counterweight  
Front fenders\*  
Front grille guard\*  
Front grille screen\*  
Rear wheel spacers for use  
with chains  
Rental decal kit  
Rotating beacon\*  
SMV emblem  
Special color paint\*  
Three-point hitch with single or  
four-function hydraulics\*

Toolbox  
\*See your John Deere dealer  
for further information

## DIMENSIONS



## LOADER PERFORMANCE

	w/1.12 cu. yd. (.86 m <sup>3</sup> ) Heavy-Duty Long Lip Bucket	w/1.0 cu. yd. (.76 m <sup>3</sup> ) Multi-purpose Bucket
Operator control	single lever	single lever
Breakout force	6,700 lb. (27.1 kN)	5,500 lb. (22.2 kN)
Lifting capacity, full height	4,630 lb. (2100 kg)	3,530 lb. (1602 kg)
Height to bucket hinge pin, max.	10 ft. 10 in. (3.31 m)	10 ft. 10 in. (3.31 m)
Dump clearance	8 ft. 11 in. (2.72 m)	8 ft. 4 in. (2.54 m)
Bucket dump angle, max.	40 degrees	45 degrees
Reach at full height, bucket at 45 degrees	30 in. (760 mm)	30 in. (760 mm)
Roll back at ground level	40 degrees	41 degrees
Digging depth below ground, bucket level	4 in. (118 mm)	7 in. (180 mm)
Raising time to full height	4.5 seconds	4.5 seconds
Bucket dump time	1.1 seconds	1.1 seconds
Bucket lowering time	2.5 seconds	2.5 seconds

## LOADER BUCKETS

Loader:	Width in. (mm)	Heaped Capacity		Weight lb. (kg)
		cu. yd.	(m <sup>3</sup> )	
Heavy-duty long lip	86 (2184)	1.12	(0.86)	918 (417)
Multipurpose	84 (2134)	1.0	(0.76)	1,341 (608)

JDAvantEdge is a wealth of support programs, parts systems, and dealer resources, all designed to give you the edge. This package of special benefits is a major reason why John Deere offers the "best value" for your equipment dollar.

**Best parts support** - Twelve regional parts depots in North America and others around the world put parts support near your job no matter where in the world it is.

A computerized FLASH™ parts locating system linking these depots to dealerships can find out-of-stock parts in a hurry and get them into your hands fast. Usually within 24 hours.

**Best service backup** - Dealer service technicians are regularly schooled, at our modern facility in Davenport, Iowa, or by professionals in the field, to diagnose quickly and repair efficiently.

If they're stumped, a phone call to DTAC (Dealer Technical Assistance Center) puts them in touch with a staff of pros at the factory who help them find a solution quickly.

**Best dealers** - Your John Deere dealer is an important contributor to the JDAvantEdge. He or she is committed to being the best equipment supplier you can work with.

This is a dollars-and-cents commitment in parts inventory, in service facilities, in field-service trucks. It's a sweat-and-blood commitment in dedicated, skilled, and highly trained and motivated personnel in each and every department at the dealership.

But what sets John Deere dealers apart from all the rest is something more, a factor somewhat difficult to measure ... a caring attitude, and a sincere desire to be the best at meeting the needs of each individual customer.

**John Deere Finance Plans** - Whether you rent, lease, or buy John Deere equipment, your dealer can explain the John Deere options available. One-stop options that let you free up operating capital, keep other lines of credit open. More solid benefits of the JDAvantEdge.

**Best protection** - In addition to the new equipment warranty that meets or exceeds the competition, SECURE® extended coverage, an optional service product for John Deere equipment, is available for repair coverage after the warranty concludes. Full machine or power train coverage is available for a variety of time periods to meet your needs. Consult your dealer for availability and details.



Net engine power is with standard equipment including air cleaner, exhaust system, alternator, and cooling fan, at standard conditions per SAE J1349 and DIN 70 020, using No. 2-D fuel at 35 API gravity. No derating is required up to 6,000 feet (1800 m) altitude. Gross power is without cooling fan.



Specifications and design subject to change without notice. Wherever applicable, specifications are in accordance with SAE standards. Except where otherwise noted, these specifications are based on a unit with 16.9-24, 8 PR rear tires, 11L-15, 8 PR front tires, and 1.12 cu. yd. (0.86 m<sup>3</sup>) loader bucket.

