



**JOHN DEERE**

CONSTRUCTION EQUIPMENT

EXCAVATORS



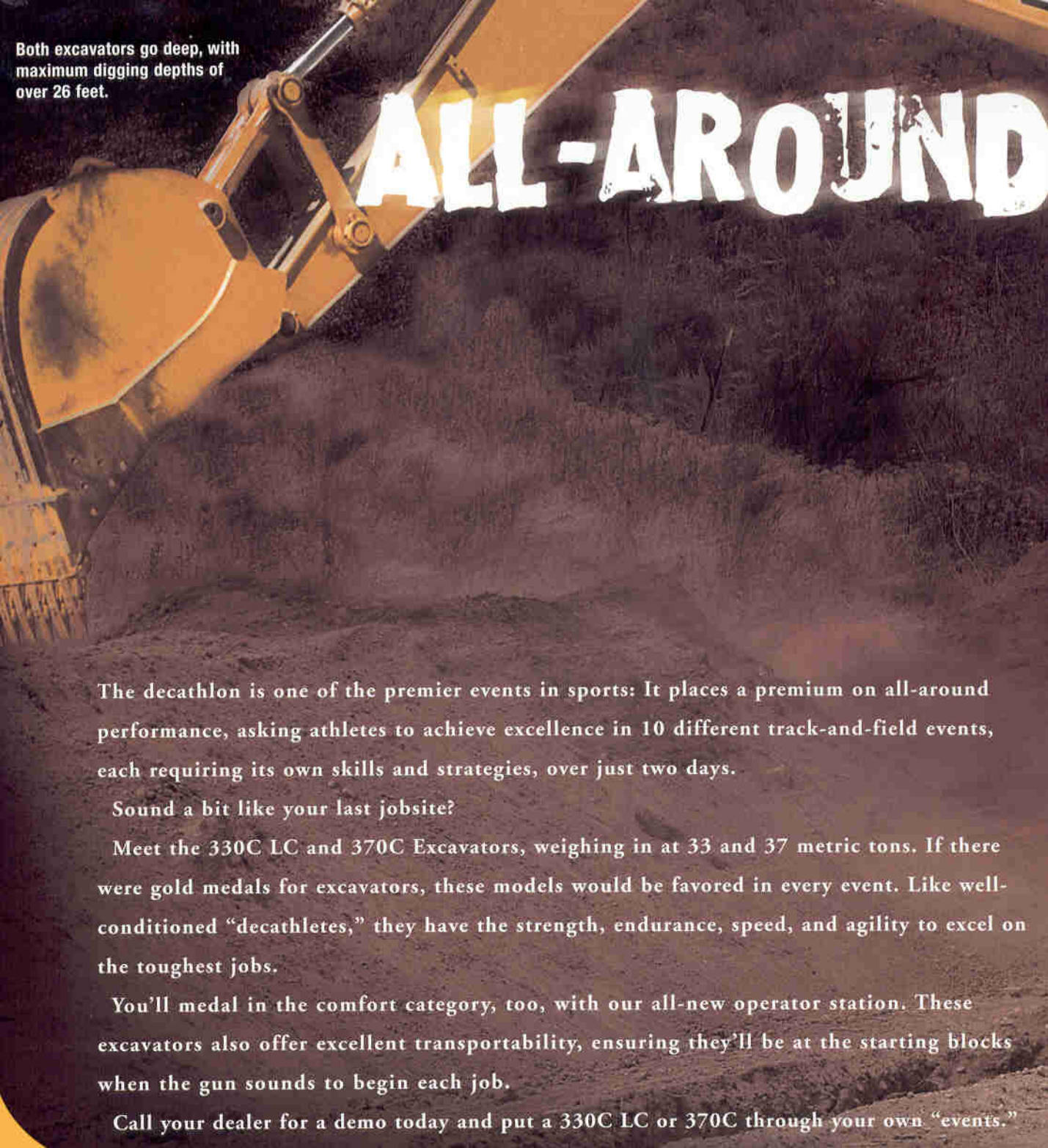
MODEL NO.

**330C LC 370C**

- > 33- to 37-metric ton
- > 246 horsepower
- > 26 ft. 3 in. to 26 ft. 7 in. digging depth with standard arm.



C-Series



Both excavators go deep, with maximum digging depths of over 26 feet.

# ALL-AROUND

The decathlon is one of the premier events in sports: It places a premium on all-around performance, asking athletes to achieve excellence in 10 different track-and-field events, each requiring its own skills and strategies, over just two days.

Sound a bit like your last jobsite?

Meet the 330C LC and 370C Excavators, weighing in at 33 and 37 metric tons. If there were gold medals for excavators, these models would be favored in every event. Like well-conditioned “decahletes,” they have the strength, endurance, speed, and agility to excel on the toughest jobs.

You’ll medal in the comfort category, too, with our all-new operator station. These excavators also offer excellent transportability, ensuring they’ll be at the starting blocks when the gun sounds to begin each job.

Call your dealer for a demo today and put a 330C LC or 370C through your own “events.”



SUBJECT:

## PERFORMANCE

### ARM OPTIONS:

330C LC	8-foot 9-inch (2.7 m)	10-foot 6-inch (3.2 m)	13-foot 1-inch (4.0 m)
370C	8-foot 9-inch (2.7 m)	10-foot 6-inch (3.2 m)	13-foot 1-inch (4.0 m)

# WINNERS

That huge pipe and heavy concrete barrier are your versions of the shot put and the discus, only you have to hang on to them. The 330C LC and the 370C make sure you do, with strong lift capacities and heavily reinforced booms.

Our Powerwise II engine/hydraulic management system makes it simple for you to be productive, with one work mode for all your challenges.

Either of these powerful units can be carried on one trailer. You won't have to break them down like larger machines, saving you time and money.

# Keep cool during hot competition

Strength, speed, and agility: Thanks to efficient hydraulic performance and a beefy Deere PowerTech engine, the 330C LC and 370C bring 75,115 pound-feet of swing torque to every contest.

Hydraulic system improvements mean levers now move with 10 percent less effort. We can't guarantee you'll feel 10 percent better at the end of the day's events, but we know you'll enjoy a difference.

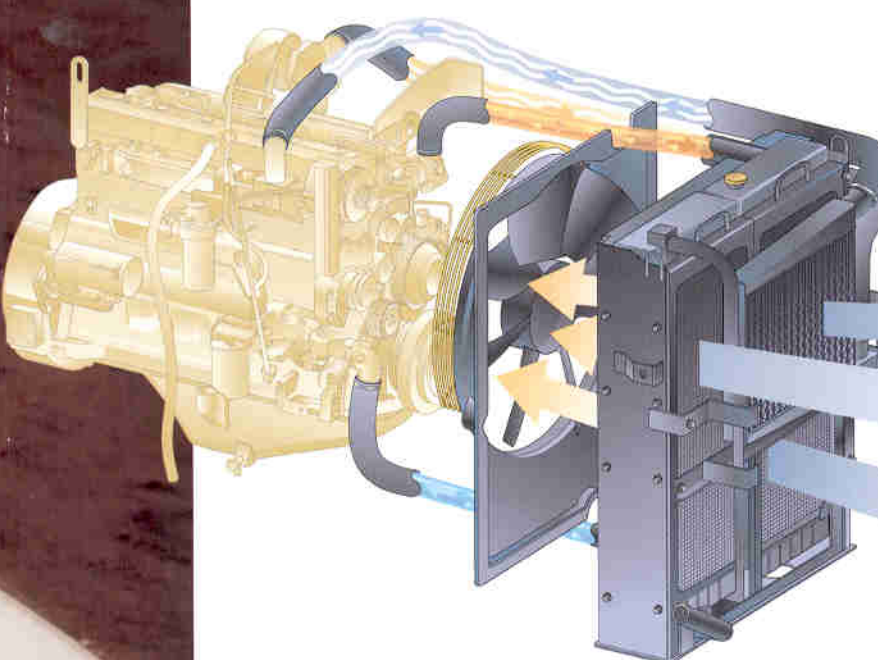
Each PowerTech engine has a brain behind its brute force. It's called an Electronic Control Unit (ECU), and it manages fuel consumption, delivering just the right amount to help you do your job, exactly when you need it. We think you'll see a difference on your fuel bills. The ECU doubles as a diagnostic tool, decreasing engine power and speed automatically if key readings drift into the dreaded "red."

The little things count when it comes to gaining a competitive edge - wet-type, individually replaceable cylinder liners in PowerTech engines eliminate hot spots and allow longer life. They also make service faster and less expensive.



SUBJECT:

## ENGINE & SYSTEMS



This cooling system won't trash productivity when the job is "down and dirty." That's because the radiator's wide fin spacing lets trash pass through the cores. Removable trash screen speeds service and helps avoid plugging.

The heavy-duty oil cooler features a furnace-welded aluminum core for unmatched durability.

Charged-air cooler lowers intake air temperature for improved combustion efficiency, enhanced fuel economy, outstanding high-altitude performance, and reduced emissions.

The action's hot and heavy on the job. Swirling dirt, dust, and trash are everywhere. Plus it's hot – oppressively hot. We've anticipated all these conditions by engineering a state-of-the-art, heavy-duty, charge-air cooling system. And just like the 330C LC and 370C, it's rugged, featuring a radiator with steel tanks and welded tube-to-header joints.

**A new high-performance fan**, crafted from the best of both plastic and steel, has a unique airfoil-blade design, allowing 13 percent more cooling performance, while using 4 less horsepower. It's also four d(B)a quieter, and a big winner during high-altitude operation. Wide fin spacing allows trash to pass through the cores, and a removable trash screen eliminates plugging.

With our new cooling system and the mighty, 246-net horsepower (at 2,000 rpm) Deere PowerTech® 8.1-liter engine, we've put you in a win-win situation.

# Win without breaking a sweat

The Powerwise II engine/hydraulic management system blends engine performance and hydraulic flow perfectly, helping you do your best, most precise work.

Our engineers don't simply design the inside of an excavator cab on their computers and move on to the next assignment; they sit in the seat and plan out the position of every button and every lever, making sure each control makes ergonomic sense for a fatigue-free environment.

Even the biggest coffee mugs fit the new cupholder. We challenge any convenience store to produce something too big.



**DEERE**



SUBJECT:

## OPERATOR STATION



Headrests, armrests, backrests, and seat cushion angles are all adjustable.

Adjustable vents are everywhere. You'll never have trouble setting and maintaining a comfortable temperature. All shift, all week.

Let the sunshine in – and the fresh air flow freely – with the tinted sunroof hatch. More glass, and a larger view for the operator, helps make for a safer jobsite.

This seat just looks comfortable, but only a “test sit” can do it justice. Be sure to adjust the luxury car-like lumbar support for your lower back.

Just like physical conditioning is the key to athletic performance, it's no secret that operator comfort is the key to productivity. We want you in a position to finish first every day.

Our all-new operator station has an automatic, high-capacity “blend-air” climate-control system to keep you cool (or warm) as conditions call for. There are vents galore, and a tinted sunroof hatch lets in even more air and does double duty as a crucial overhead viewpoint. In all, Deere has designed 28 percent more glass into the cab for improved sight lines. Even the windshield wiper's been re-engineered – it cleans 25 percent more glass and then disappears from view.

A new seat, fit for a king (or queen), features adjustable lumbar support that's like a built-in masseuse for your back. Touches such as a 12-volt cell-phone jack, beverage cooler, and a massive cup holder are at your service.

SUBJECT:

**SERVICE**

# Our customer service clears the high hurdles

With Customer Personal Service (CPS)-Online, we go the distance for you, 24 hours a day, seven days a week. CPS-Online is a secured Web site that grants you access to information that helps your business, such as owning and operating costs, parts ordering, tech-manual CD-ROMs, and even safety and training materials.

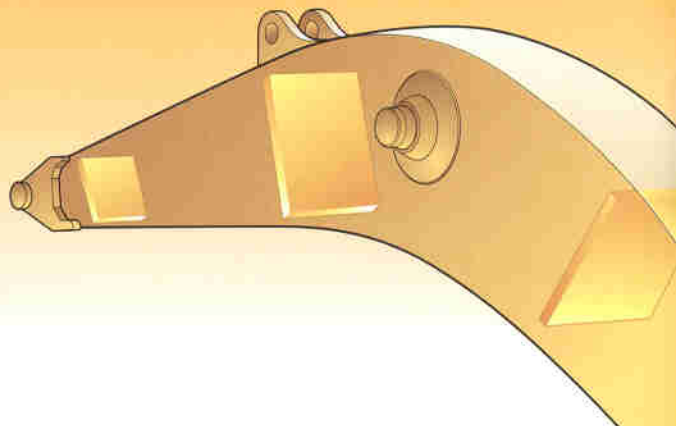
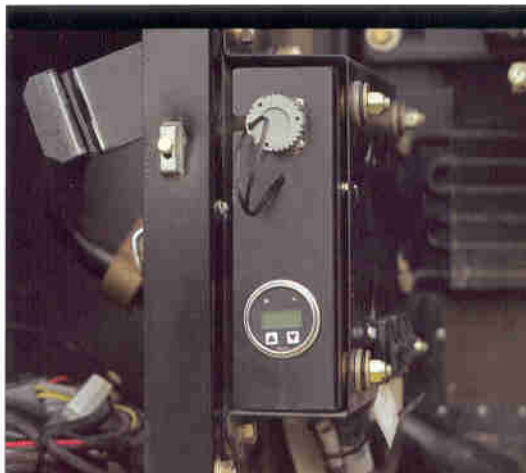
There are also features you wouldn't expect, like competitive spec comparisons. At Deere, we're confident we stack up against anyone.

How does it work? Simply get on your desktop or laptop computer, type in your user ID and password, and you have a wide range of tools and problem-solving knowledge at your fingertips. No need for phone calls, faxes, or sipping coffee for three hours while waiting for "business hours" to begin. We know that today's action isn't limited to six-to-six.


Ask the Customer Service Advisor at your dealership about CPS-Online and get "Team Deere" behind you for all your events.



The Diagnostic Display Unit (DDU) keeps close tabs on all engine systems. The DDU is a valuable diagnostic tool for Deere technicians because it provides specific, detailed data on engine performance.



Deere's StructurAll™ warranty gives you three years of "no-fear" coverage on all important structures, like booms, arms, and main-frames, for unlimited hours at NO charge.



Log-on to CPS-Online and you can e-mail your dealer, order parts, tech manual CDs, and training materials on a 24/7 basis.

Large, easy-to-open service doors let you get to all of our daily service points.

More time to compete: We've extended routine service intervals on the 330C LC and 370C so you spend more time in the cab. The first hydraulic filter change isn't due until 4,000 hours. The grease intervals for the boom and arm also have been increased substantially.

There's no substitute for "face time." On-line solutions may be a great way to increase productivity, but that doesn't mean John Deere dealers are any less passionate about good listening skills. There's only one way to build relationships, and that's face-to-face.

# 330C LC 370C



Engine	330C LC / 370C
Type	John Deere 6081H with turbocharger and air-to-air charge air cooler
Rated power	246 SAE net hp (183 kW) @ 2,000 rpm
Cylinders	6
Displacement	494 cu. in. (8.1 L)
Maximum net torque	802 lb.-ft. (1087 Nm) @ 1,600 rpm
Fuel consumption, typical	6 to 10 gal./hr. (23 to 38 L/h)
Cooling fan	suction-type drive
Electrical system	24 volt with 45-amp alternator
Batteries (two 12 volt)	reserve capacity: 180 min.
Off-level capacity	100% (45 deg.)

## Hydraulic System

Main pumps	two variable-displacement axial-piston
Minimum flow	2 x 21 gpm (2 x 79 L/min.)
Maximum flow	2 x 77 gpm (2 x 292 L/min.)
Pilot pump	one gear
Maximum rated flow	4.4 gpm (16.8 L/min.)
Pressure setting	580 psi (4000 kPa)
System operating pressure	
Implement circuits	4,550 psi (31 371 kPa)
Travel circuits	5,050 psi (34 820 kPa)
Swing circuits	4,610 psi (31 785 kPa)
Power boost	4,980 psi (34 300 kPa)
Oil filtration	one 10-micron full-flow return filter with by-pass / one pilot oil filter / one suction filter

## Cylinders

Boom (2)	
Bore	5.9 in. (150 mm)
Rod diameter	4.1 in. (105 mm)
Stroke	59.3 in. (1507 mm)
Arm (1)	
Bore	6.7 in. (170 mm)
Rod diameter	4.5 in. (115 mm)
Stroke	70.7 in. (1795 mm)
Bucket (1)	
Bore	5.7 in. (145 mm)
Rod diameter	3.7 in. (95 mm)
Stroke	49.2 in. (1250 mm)

## Swing Mechanism

Swing speed	0-11.6 rpm
Swing torque	75,115 lb.-ft. (101 920 Nm)

## Undercarriage

	330C LC	370C
Carrier rollers (per side)	2	2
Track rollers (per side)	9	8
Shoes, triple semi-grouser (per side)	48	45
Track guides	front and center	front and center
Track adjustment	hydraulic	hydraulic
Travel speed		
Low	0-2.2 mph (0-3.6 km/h)	0-1.9 mph (0-3.0 km/h)
High	0-3.4 mph (0-5.5 km/h)	0-3.0 mph (0-4.9 km/h)
Drawbar pull	56,086 lb. (25 441 kg)	65,098 lb. (29 528 kg)

## Ground Pressure Data

Average ground pressure	
24-in. (600 mm) triple semi-grouser shoes	8.73 psi (60.2 kPa); recommended for rocky terrain and stumps
32-in. (800 mm) triple semi-grouser shoes	6.75 psi (46.5 kPa); recommended for general/soft terrain
30-in. (750 mm) triple semi-grouser shoes	7.95 psi (54.8 kPa)

## Capacities

	330C LC	370C
Fuel tank	148 gal. (560 L)	148 gal. (560 L)
Cooling system	58 qt. (55 L)	58 qt. (55 L)
Engine lubrication, including filter	32 qt. (30 L)	32 qt. (30 L)
Hydraulic tank	42 gal. (159 L)	42 gal. (159 L)
Hydraulic system	85 gal. (322 L)	85 gal. (322 L)
Propel gearbox (each)	8 qt. (7.5 L)	9 qt. (8.5 L)
Swing drive	15 qt. (14 L)	15 qt. (14 L)

**Operating Weights****330C LC****370C**

With full fuel tank; 175-lb. (79 kg) operator; 2.3-cu.-yd. (1.76 m <sup>3</sup> ), 54-in. (1370 mm), 2,557-lb. (1160 kg) heavy-duty bucket; and 13-ft. 1-in. (4.0 m) arm	
With 32-in. (800 mm) triple semi-grouser shoes and 15,018-lb. (6812 kg) counterweight.....	72,800 lb. (33 058 kg)
With 30-in. (750 mm) triple semi-grouser shoes and 16,670-lb. (7562 kg) counterweight.....	81,200 lb. (36 832 kg)

**Component Weights**

<b>Undercarriage</b>	
24-in. (600 mm) triple semi-grouser shoes .....	24,857 lb. (11 275 kg)
32-in. (800 mm) triple semi-grouser shoes .....	27,030 lb. (12 261 kg)
30-in. (750 mm) triple semi-grouser shoes .....	33,785 lb. (15 325 kg)
<b>Upperstructure with full fuel tank (less front attachments and boom lift cylinders [2])</b>	
Less 15,018-lb. (6812 kg) counterweight .....	15,772 lb. (7154 kg)
Less 16,670-lb. (7562 kg) counterweight .....	15,772 lb. (7154 kg)
One-piece boom (with arm cylinder).....	6,682 lb. (3031 kg)
<b>Arm with bucket cylinder and linkage</b>	
8 ft. 9 in. (2.66 m) .....	3,635 lb. (1649 kg)
10 ft. 6 in. (3.2 m) .....	3,876 lb. (1758 kg)
13 ft. 1 in. (4.0 m) .....	4,184 lb. (1898 kg)
Boom lift cylinders (2) total weight .....	1,248 lb. (624 kg)
54-in. (1370 mm), 2.3-cu.-yd. (1.76 m <sup>3</sup> ) heavy-duty bucket .....	2,557 lb. (1160 kg)
Counterweight .....	15,018 lb. (6812 kg)

**330C LC Operating Information**

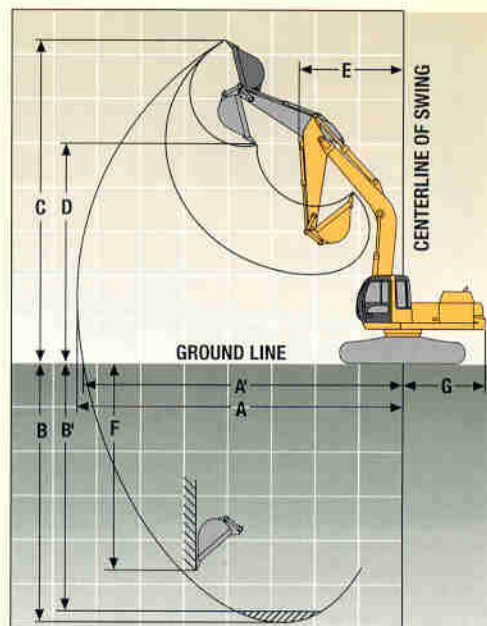
	<i>Arm Length 8 ft. 9 in. (2.66 m)</i>	<i>Arm Length 10 ft. 6 in. (3.2 m)</i>	<i>Arm Length 13 ft. 1 in. (4.0 m)</i>
Arm force with 54-in. (1370 mm) heavy-duty bucket*.....	43,000 lb. (191.3 kN)	37,396 lb. (166.3 kN)	32,136 lb. (142.9 kN)
Bucket digging force with 54-in. (1370 mm) 2.3-cu. yd. (1.76 m <sup>3</sup> ) heavy-duty bucket* .....	48,220 lb. (214.5 kN)	48,220 lb. (214.5 kN)	48,220 lb. (214.5 kN)
Lifting capacity over front @ ground level 20-ft. (6.1 m) reach* .....	26,009 lb. (11 798 kg)	26,089 lb. (11 834 kg)	26,307 lb. (11 933 kg)
<b>A</b> Maximum reach .....	34 ft. 6 in. (10.51 m)	36 ft. 3 in. (11.04 m)	38 ft. 9 in. (11.80 m)
<b>A<sup>1</sup></b> Maximum reach @ ground level .....	33 ft. 9 in. (10.30 m)	35 ft. 7 in. (10.84 m)	38 ft. 1 in. (11.60 m)
<b>B</b> Maximum digging depth .....	22 ft. 2 in. (6.77 m)	23 ft. 11 in. (7.30 m)	26 ft. 7 in. (8.10 m)
<b>B<sup>1</sup></b> Maximum digging depth @ 8-ft. (2.44 m) flat bottom .....	21 ft. 7 in. (6.57 m)	23 ft. 5 in. (7.14 m)	26 ft. 2 in. (7.97 m)
<b>C</b> Maximum cutting height .....	32 ft. 3 in. (9.83 m)	33 ft. 5 in. (10.19 m)	34 ft. 8 in. (10.58 m)
<b>D</b> Maximum dumping height .....	22 ft. 8 in. (6.91 m)	23 ft. 8 in. (7.21 m)	24 ft. 10 in. (7.58 m)
<b>E</b> Minimum swing radius .....	15 ft. 3 in. (4.65 m)	14 ft. 9 in. (4.49 m)	14 ft. 10 in. (4.52 m)
<b>F</b> Maximum vertical wall .....	18 ft. 2 in. (5.54 m)	21 ft. (6.40 m)	23 ft. 11 in. (7.29 m)
<b>G</b> Tail swing radius .....	10 ft. 10 in. (3.30 m)	10 ft. 10 in. (3.30 m)	10 ft. 11 in. (3.32 m)

\*Digging forces and lift capacities with power boost.

**370C Operating Information**

	<i>Arm Length 8 ft. 9 in. (2.66 m)</i>	<i>Arm Length 10 ft. 6 in. (3.2 m)</i>	<i>Arm Length 13 ft. 1 in. (4.0 m)</i>
Arm force with 54-in. (1370 mm) heavy-duty bucket*.....	43,000 lb. (191.3 kN)	37,396 lb. (166.3 kN)	32,136 lb. (142.9 kN)
Bucket digging force with 54-in. (1370 mm) 2.3-cu. yd. (1.76 m <sup>3</sup> ) heavy-duty bucket* .....	48,220 lb. (214.5 kN)	48,220 lb. (214.5 kN)	48,220 lb. (214.5 kN)
Lifting capacity over front @ ground level 20-ft. (6.1 m) reach* .....	28,844 lb. (13 084 kg)	28,421 lb. (12 892 kg)	27,298 lb. (12 382 kg)
<b>A</b> Maximum reach .....	34 ft. 6 in. (10.51 m)	36 ft. 3 in. (11.04 m)	38 ft. 9 in. (11.80 m)
<b>A<sup>1</sup></b> Maximum reach @ ground level .....	33 ft. 9 in. (10.27 m)	35 ft. 7 in. (10.82 m)	38 ft. 1 in. (11.60 m)
<b>B</b> Maximum digging depth .....	21 ft. 11 in. (6.67 m)	23 ft. 8 in. (7.21 m)	26 ft. 3 in. (8.00 m)
<b>B<sup>1</sup></b> Maximum digging depth @ 8-ft. (2.44 m) flat bottom .....	21 ft. 3 in. (6.48 m)	23 ft. 2 in. (7.05 m)	25 ft. 10 in. (7.89 m)
<b>C</b> Maximum cutting height .....	32 ft. 7 in. (9.93 m)	33 ft. 9 in. (10.28 m)	35 ft. (10.68 m)
<b>D</b> Maximum dumping height .....	23 ft. (7.00 m)	23 ft. 7 in. (7.18 m)	25 ft. 2 in. (7.68 m)
<b>E</b> Minimum swing radius .....	15 ft. 3 in. (4.65 m)	14 ft. 9 in. (4.49 m)	14 ft. 10 in. (4.52 m)
<b>F</b> Maximum vertical wall .....	17 ft. 10 in. (5.44 m)	20 ft. 8 in. (6.31 m)	23 ft. 7 in. (7.19 m)
<b>G</b> Tail swing radius .....	10 ft. 10 in. (3.30 m)	10 ft. 10 in. (3.30 m)	10 ft. 11 in. (3.32 m)

\*Digging forces and lift capacities with power boost.



**Dimensions**

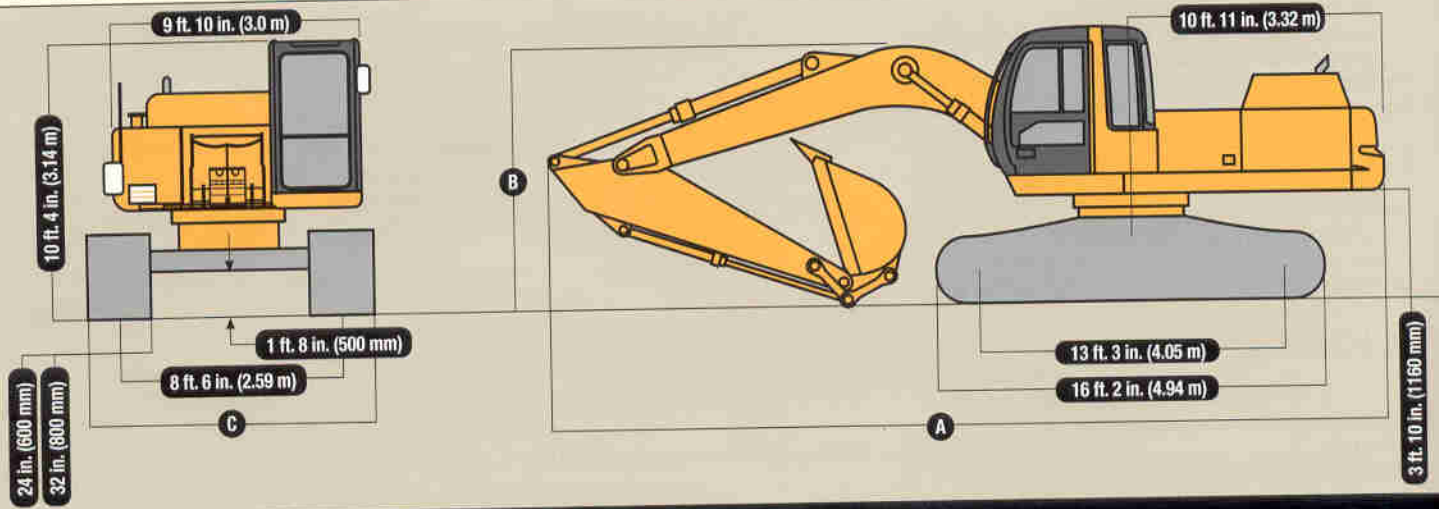
**330C LC**

<b>A</b>	8-ft. 9-in. (2.66 m) arm .....	36 ft. 5 in. (11.09 m)
	10-ft. 6-in. (3.2 m) arm .....	36 ft. (10.97 m)
	13-ft. 1-in. (4.0 m) arm .....	36 ft. 3 in. (11.05 m)
<b>B</b>	8 ft. 9 in. (2.66 m) arm .....	11 ft. 5 in. (3.47 m)
	10-ft. 6-in. (3.2 m) arm .....	10 ft. 7 in. (3.23 m)
	13-ft. 1-in. (4.0 m) arm .....	11 ft. 9 in. (3.57 m)
<b>C</b>	With 24-in. (600 mm) semi-grouser shoes .....	10 ft. 6 in. (3.19 m)
	With 30-in. (750 mm) semi-grouser shoes .....	10 ft. 11 in. (3.34 m)
	With 32-in. (800 mm) semi-grouser shoes .....	11 ft. 1 in. (3.39 m)

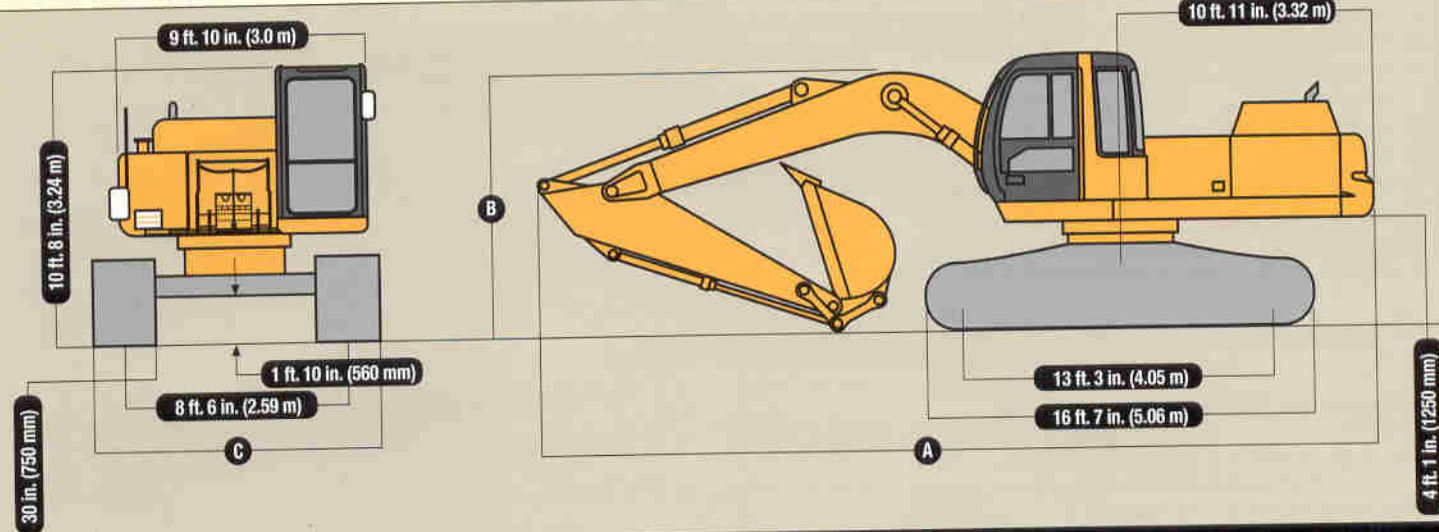
**370C**

36 ft. 4 in. (11.08 m)
36 ft. (10.97 m)
36 ft. 2 in. (11.03 m)
11 ft. 5 in. (3.47 m)
10 ft. 7 in. (3.23 m)
11 ft. 6 in. (3.51 m)

**330C LC Excavator**



**370C Excavator**



### 30C LC Lift Capacities

**Boldface italic** type indicates hydraulic-limited capacities; lightface type indicates stability-limited capacities, in lb. (kg). Ratings at bucket lift hook; machine equipped with 2.3-cu. yd. (1.76 m<sup>3</sup>) 54-in. (1370 mm) wide, 2,557-lb. (1160 kg) bucket; and situated on firm, uniform supporting surface. Total load includes weight of cables, hook, etc. Figures do not exceed 87 percent of hydraulic capacities or 75 percent of weight needed to tip machine. All lift capacities are with power boost and are based on SAE J1097.

Load Point Height	10 ft. (3.05 m)		15 ft. (4.57 m)		20 ft. (6.10 m)		25 ft. (7.62 m)		30 ft. (9.14 m)	
	Over Front	Over Side	Over Front	Over Side	Over Front	Over Side	Over Front	Over Side	Over Front	Over Side
<i>With 24-in. (600 mm) shoes and 8-ft. 9-in. (2.66 m) arm</i>										
20 ft. (6.10 m)							<b>15,903 (7214)</b>	12,553 (5694)		
15 ft. (4.57 m)					<b>19,843 (9001)</b>	17,682 (8021)	<b>17,194 (7799)</b>	12,063 (5472)	14,136 (6412)	8,506 (3858)
10 ft. (3.05 m)					<b>23,951 (10 864)</b>	16,255 (7373)	18,867 (8558)	11,377 (5161)	13,826 (6271)	8,221 (3729)
5 ft. (1.52 m)					25,927 (11 760)	15,059 (6831)	18,139 (8228)	10,724 (4864)	13,468 (6109)	7,892 (3580)
Ground Line					25,199 (11 430)	14,429 (6545)	17,636 (8000)	10,272 (4659)	13,204 (5989)	7,650 (3470)
-5 ft. (-1.52 m)			<b>23,374 (10 602)</b>	22,719 (10 305)	25,004 (11 342)	14,261 (6469)	17,429 (7906)	10,085 (4575)	13,150 (5965)	7,600 (3447)
-10 ft. (-3.05 m)	<b>34,367 (15 589)</b>	<b>34,367 (15 589)</b>	<b>21,236 (9633)</b>	<b>21,236 (9633)</b>	25,191 (11 427)	14,422 (6542)	17,549 (7960)	10,194 (4624)		
-15 ft. (-4.57 m)			<b>25,600 (11 612)</b>	23,858 (10 822)	<b>20,618 (9352)</b>	14,948 (6780)				
<i>With 24-in. (600 mm) shoes and 10-ft. 6-in. (3.2 m) arm</i>										
20 ft. (6.10 m)							<b>14,473 (6565)</b>	12,754 (5785)	<b>8,723 (3957)</b>	<b>8,723 (3957)</b>
15 ft. (4.57 m)							<b>15,945 (7233)</b>	12,230 (5547)	14,260 (6468)	8,605 (3903)
10 ft. (3.05 m)			<b>31,935 (14 486)</b>	25,772 (11 690)	<b>22,285 (10 108)</b>	16,626 (7542)	<b>18,081 (8201)</b>	11,508 (5220)	13,880 (6296)	8,256 (3745)
5 ft. (1.52 m)					<b>26,176 (11 873)</b>	15,295 (6938)	18,234 (8271)	10,791 (4895)	13,462 (6106)	7,872 (3571)
Ground Line			<b>21,194 (9614)</b>	<b>21,194 (9614)</b>	25,279 (11 466)	14,474 (6565)	17,634 (7999)	10,251 (4650)	13,126 (5954)	7,564 (3431)
-5 ft. (-1.52 m)	<b>15,603 (7077)</b>	<b>15,603 (7077)</b>	<b>20,544 (9319)</b>	<b>20,544 (9319)</b>	24,905 (11 297)	14,151 (6419)	17,321 (7857)	9,970 (4522)	12,963 (5880)	7,414 (3363)
-10 ft. (-3.05 m)	<b>25,984 (11 786)</b>	<b>25,984 (11 786)</b>	<b>26,208 (11 888)</b>	22,761 (10 324)	24,953 (11 319)	14,192 (6437)	17,316 (7854)	9,966 (4521)		
-15 ft. (-4.57 m)	<b>20,074 (9106)</b>	<b>20,074 (9106)</b>	<b>28,870 (13 095)</b>	23,371 (10 601)	<b>22,802 (10 343)</b>	14,572 (6610)	<b>16,970 (7698)</b>	10,328 (4685)		
<i>With 24-in. (600 mm) shoes and 13-ft. 1-in. (4.0 m) arm</i>										
20 ft. (6.10 m)									<b>11,403 (5172)</b>	9,071 (4115)
15 ft. (4.57 m)									<b>13,260 (6015)</b>	8,802 (3992)
10 ft. (3.05 m)			<b>26,288 (11 924)</b>	<b>26,288 (11 924)</b>	<b>19,583 (8883)</b>	17,248 (7824)	<b>16,337 (7410)</b>	11,784 (5345)	14,039 (6368)	8,382 (3802)
5 ft. (1.52 m)			<b>35,209 (15 971)</b>	24,259 (11 004)	<b>24,032 (10 901)</b>	15,732 (7136)	18,456 (8372)	10,966 (4974)	13,537 (6140)	7,922 (3593)
Ground Line			<b>28,835 (13 079)</b>	22,655 (10 276)	25,497 (11 565)	14,632 (6637)	17,706 (8031)	10,293 (4669)	13,101 (5943)	7,521 (3412)
-5 ft. (-1.52 m)	<b>16,801 (7621)</b>	<b>16,801 (7621)</b>	<b>27,413 (12 434)</b>	22,192 (10 066)	24,835 (11 265)	14,058 (6377)	17,233 (7817)	9,867 (4476)	12,815 (5813)	7,259 (3293)
-10 ft. (-3.05 m)	<b>21,986 (9973)</b>	<b>21,986 (9973)</b>	<b>30,098 (13 652)</b>	22,256 (10 095)	24,660 (11186)	13,907 (6308)	17,063 (7740)	9,715 (4407)	12,747 (5782)	7,196 (3264)
-15 ft. (-4.57 m)	<b>22,737 (10 313)</b>	<b>22,737 (10 313)</b>	<b>32,779 (14 868)</b>	22,689 (10 292)	24,885 (11 288)	14,102 (6397)	17,222 (7812)	9,857 (4471)		
-20 ft. (-6.10 m)			<b>24,969 (11 326)</b>	23,551 (10 683)	<b>19,196 (8707)</b>	14,704 (6670)				
<i>With 32-in. (800 mm) shoes and 8-ft. 9-in. (2.66 m) arm</i>										
20 ft. (6.10 m)							<b>15,903 (7214)</b>	12,920 (5860)		
15 ft. (4.57 m)					<b>19,843 (9001)</b>	18,167 (8240)	<b>17,194 (7799)</b>	12,429 (5638)	14,599 (6622)	8,800 (3992)
10 ft. (3.05 m)					<b>23,951 (10 864)</b>	16,740 (7593)	<b>19,160 (8691)</b>	11,744 (5327)	14,290 (6482)	8,516 (3863)
5 ft. (1.52 m)					26,737 (12 128)	15,544 (7051)	18,729 (8495)	11,090 (5030)	13,931 (6319)	8,186 (3713)
Ground Line					26,009 (11 798)	14,914 (6765)	18,225 (8267)	10,638 (4825)	13,667 (6199)	7,944 (3603)
-5 ft. (-1.52 m)			<b>23,374 (10 602)</b>	<b>23,374 (10 602)</b>	25,814 (11 709)	14,746 (6689)	18,018 (8173)	10,452 (4741)	13,613 (6175)	7,895 (3581)
-10 ft. (-3.05 m)	<b>34,367 (15 589)</b>	<b>34,367 (15 589)</b>	<b>21,236 (9633)</b>	<b>21,236 (9633)</b>	<b>25,874 (11 736)</b>	14,907 (6762)	18,138 (8227)	10,560 (4790)		
-15 ft. (-4.57 m)			<b>25,600 (11 612)</b>	24,575 (11 147)	<b>20,618 (9352)</b>	15,433 (7000)				
<i>With 32-in. (800 mm) shoes and 10-ft. 6-in. (3.2 m) arm</i>										
20 ft. (6.10 m)							<b>14,473 (6565)</b>	13,120 (5951)	<b>8,723 (3957)</b>	<b>8,723 (3957)</b>
15 ft. (4.57 m)							<b>15,945 (7233)</b>	12,596 (5714)	14,723 (6678)	8,899 (4037)
10 ft. (3.05 m)			<b>31,935 (14 486)</b>	26,489 (12 015)	<b>22,285 (10 108)</b>	17,111 (7761)	<b>18,081 (8201)</b>	11,875 (5386)	14,343 (6506)	8,550 (3878)
5 ft. (1.52 m)					<b>26,176 (11 873)</b>	15,780 (7158)	18,824 (8539)	11,157 (5061)	13,925 (6316)	8,166 (3704)
Ground Line			<b>21,194 (9614)</b>	<b>21,194 (9614)</b>	26,089 (11 834)	14,959 (6785)	18,223 (8266)	10,618 (4816)	13,589 (6164)	7,858 (3564)
-5 ft. (-1.52 m)	<b>15,603 (7077)</b>	<b>15,603 (7077)</b>	<b>20,544 (9319)</b>	<b>20,544 (9319)</b>	25,715 (11 664)	14,636 (6639)	17,910 (8124)	10,336 (4688)	13,426 (6090)	7,708 (3496)
-10 ft. (-3.05 m)	<b>25,984 (11 786)</b>	<b>25,984 (11 786)</b>	<b>26,208 (11 888)</b>	23,478 (10 650)	25,763 (11 686)	14,677 (6657)	17,905 (8122)	10,332 (4687)		
-15 ft. (-4.57 m)	<b>20,074 (9106)</b>	<b>20,074 (9106)</b>	<b>28,870 (13 095)</b>	24,089 (10 927)	<b>22,802 (10 343)</b>	15,057 (6830)	<b>16,970 (7698)</b>	10,694 (4851)		
<i>With 32-in. (800 mm) shoes and 13-ft. 1-in. (4.0 m) arm</i>										
20 ft. (6.10 m)									<b>11,403 (5172)</b>	9,361 (4246)
15 ft. (4.57 m)									<b>13,260 (6015)</b>	9,093 (4125)
10 ft. (3.05 m)			<b>26,288 (11 924)</b>	<b>26,288 (11 924)</b>	<b>19,583 (8883)</b>	17,726 (8040)	<b>16,337 (7410)</b>	12,145 (5509)	<b>14,491 (6573)</b>	8,673 (3934)
5 ft. (1.52 m)			<b>35,209 (15 970)</b>	24,967 (11 325)	<b>24,032 (10 901)</b>	16,211 (7353)	<b>18,798 (8527)</b>	11,327 (5138)	14,000 (6350)	8,212 (3725)
Ground Line			<b>28,835 (13 079)</b>	23,362 (10 597)	26,307 (11 933)	15,110 (6854)	18,295 (8299)	10,654 (4833)	13,564 (6152)	7,812 (3543)
-5 ft. (-1.52 m)	<b>16,801 (7621)</b>	<b>16,801 (7621)</b>	<b>27,413 (12 434)</b>	22,899 (10 387)	25,644 (11 632)	14,537 (6594)	17,822 (8084)	10,228 (4639)	13,278 (6023)	7,549 (3424)
-10 ft. (-3.05 m)	<b>21,986 (9973)</b>	<b>21,986 (9973)</b>	<b>30,098 (13 652)</b>	22,963 (10 416)	25,470 (11 553)	14,385 (6525)	17,652 (8007)	10,076 (4570)	13,210 (5992)	7,486 (3396)
-15 ft. (-4.57 m)	<b>22,737 (10 313)</b>	<b>22,737 (10 313)</b>	<b>32,779 (14 868)</b>	23,396 (10 612)	<b>25,124 (11 396)</b>	14,580 (6613)	17,811 (8079)	10,218 (4635)		
-20 ft. (-6.10 m)			<b>24,969 (11 326)</b>	24,259 (11 004)	<b>19,196 (8707)</b>	15,182 (6887)				

### 370C Lift Capacities

**Boldface italic** type indicates hydraulic-limited capacities; lightface type indicates stability-limited capacities, in lb. (kg). Ratings at bucket lift hook; machine equipped with 2.3-cu. yd. (1.76 m<sup>3</sup>) 54-in. (1370 mm) wide, 2,557-lb. (1160 kg) bucket; and situated on firm, uniform supporting surface. Total load includes weight of cables, hook, etc. Figures do not exceed 87 percent of hydraulic capacities or 75 percent of weight needed to tip machine. All lift capacities are with power boost and are based on SAE J1097.

Load Point Height	10 ft. (3.05 m)		15 ft. (4.57 m)		20 ft. (6.10 m)		25 ft. (7.62 m)		30 ft. (9.14 m)		
	Over Front	Over Side	Over Front	Over Side	Over Front	Over Side	Over Front	Over Side	Over Front	Over Side	
<i>With 30-in. (750 mm) shoes and 8-ft. 9-in. (2.66 m) arm</i>											
20 ft. (6.10 m)							15,949 (7234)	14,921 (6768)			
15 ft. (4.57 m)					20,084 (9110)	20,084 (9110)	17,305 (7849)	14,411 (6537)	15,790 (7162)	10,409 (4721)	
10 ft. (3.05 m)					24,205 (10 979)	19,333 (8769)	19,289 (8749)	13,720 (6223)	16,638 (7547)	10,116 (4589)	
5 ft. (1.52 m)					27,531 (12 488)	18,167 (8240)	21,137 (9588)	13,075 (5931)	16,282 (7385)	9,789 (4440)	
Ground Line					28,844 (13 084)	17,571 (7970)		21,221 (9626)	12,638 (5733)	16,028 (7270)	9,555 (4334)
-5 ft. (-1.52 m)			22,777 (10 332)	22,777 (10 332)	28,203 (12 793)	17,426 (7904)		21,033 (9541)	12,469 (5656)		
-10 ft. (-3.05 m)	31,927 (14 482)	31,927 (14 482)	22,075 (10 013)	22,075 (10 013)	25,647 (11 633)	17,607 (7986)		19,936 (9043)	12,599 (5715)		
-15 ft. (-4.57 m)			25,036 (11 356)	25,036 (11 356)	20,126 (9129)	18,164 (8239)					

*With 30-in. (750 mm) shoes and 10-ft. 6-in. (3.2 m) arm*

20 ft. (6.10 m)							14,535 (6593)	14,535 (6593)	9,384 (4257)	9,384 (4257)	
15 ft. (4.57 m)							16,066 (7267)	14,576 (6612)	14,889 (6754)	10,503 (4764)	
10 ft. (3.05 m)			32,561 (14 770)	30,241 (13 717)	22,557 (10 232)	19,699 (8935)	18,223 (8266)	13,849 (6282)	15,892 (7209)	10,148 (4603)	
5 ft. (1.52 m)					26,371 (11 962)	18,392 (8343)	20,334 (9223)	13,137 (5959)	16,272 (7381)	9,765 (4429)	
Ground Line			21,241 (9635)	21,241 (9635)	28,421 (12 892)	17,605 (7986)		21,213 (9622)	12,612 (5721)	15,945 (7233)	9,465 (4293)
-5 ft. (-1.52 m)	16,747 (7596)	16,747 (7596)	19,852 (9005)	19,852 (9005)	28,505 (12 930)	17,307 (7850)		20,918 (9488)	12,348 (5601)	15,796 (7165)	9,328 (4231)
-10 ft. (-3.05 m)	25,683 (11 650)	25,683 (11 650)	26,716 (12 118)	26,716 (12 118)	26,701 (12 111)	17,369 (7879)		20,769 (9421)	12,362 (5607)		
-15 ft. (-4.57 m)	21,048 (9547)	21,048 (9547)	28,391 (12 878)	28,117 (12 754)	22,431 (10 175)	17,774 (8062)		16,527 (7497)	12,759 (5787)		

*With 30-in. (750 mm) shoes and 13-ft. 1-in. (4.0 m) arm*

25 ft. (7.62 m)									6,877 (3119)	6,877 (3119)	
20 ft. (6.10 m)									11,567 (5247)	10,978 (4980)	
15 ft. (4.57 m)							14,143 (6415)	14,143 (6415)	13,326 (6045)	10,696 (4852)	
10 ft. (3.05 m)			26,924 (12 213)	26,924 (12 213)	19,875 (9015)	19,875 (9015)	16,494 (7482)	14,119 (6404)	14,577 (6612)	10,270 (4658)	
5 ft. (1.52 m)			35,619 (16 157)	28,802 (13 065)	24,278 (11 012)	18,813 (8534)	18,942 (8592)	13,305 (6035)	15,946 (7233)	9,810 (4450)	
Ground Line			28,564 (12 957)	27,294 (12 380)	27,298 (12 382)	17,745 (8049)	20,865 (9464)	12,645 (5736)	15,913 (7218)	9,416 (4271)	
-5 ft. (-1.52 m)	17,524 (7949)	17,524 (7949)	27,494 (12 471)	26,875 (12 190)	28,428 (12 895)	17,202 (7803)		20,820 (9444)	12,236 (5550)	15,639 (7094)	9,164 (4157)
-10 ft. (-3.05 m)	21,450 (9730)	21,450 (9730)	30,337 (13 761)	26,965 (12 231)	27,696 (12 563)	17,073 (7744)		20,670 (9376)	12,101 (5489)	15,586 (7070)	9,116 (4135)
-15 ft. (-4.57 m)	23,376 (10 603)	23,376 (10 603)	32,408 (14 700)	27,421 (12 438)	24,871 (11 281)	17,290 (7843)		19,107 (8667)	12,265 (5563)		
-20 ft. (-6.10 m)			24,308 (11 026)	24,308 (11 026)	18,637 (8454)	17,927 (8132)					

### 330C LC / 370C Buckets

A full line of buckets is offered to meet a wide variety of applications. Digging forces are with power boost. The buckets have an adjustable bushing for side clearance, with the exception of the ditching bucket. Tooth selection includes either the John Deere Fanggs<sup>®</sup>, Standard, Tiger, Twin Tiger, Abrasion panel, or Flare tooth, or the ESCO (Vertalok) Standard, Tiger, Twin Tiger, or Flare tooth. Replaceable cutting edges are available through John Deere parts. Optional side cutters add 6 inches (150 mm) to bucket widths.

Type Bucket	Bucket Width		Bucket Capacity*		Weight		Bucket Dig Force		Arm Dig Force 8 ft. 9 in. (2.66 m)		Arm Dig Force 10 ft. 6 in. (3.2 m)		Arm Dig Force 13 ft. 1 in. (4.0 m)		Bucket Tip Radius		No. Teeth
	in.	mm	cu. yd.	m <sup>3</sup>	lb.	kg	lb.	kN	lb.	kN	lb.	kN	lb.	kN	in.	mm	
General-Purpose	30	762	1.20	0.92	1,770	803	48,220	214.5	43,000	191.3	37,396	166.3	32,136	142.9	63.0	1600	4
Plate Lip	36	914	1.48	1.13	1,872	849	48,220	214.5	43,000	191.3	37,396	166.3	32,136	142.9	63.0	1600	4
	42	1067	1.75	1.34	1,998	906	48,220	214.5	43,000	191.3	37,396	166.3	32,136	142.9	63.0	1600	5
	48	1219	2.03	1.55	2,115	959	48,220	214.5	43,000	191.3	37,396	166.3	32,136	142.9	63.0	1600	6
	54	1372	2.30	1.76	2,215	1005	48,220	214.5	43,000	191.3	37,396	166.3	32,136	142.9	63.0	1600	7
	60	1524	2.59	1.98	2,338	1061	48,220	214.5	43,000	191.3	37,396	166.3	32,136	142.9	63.0	1600	7
General-Purpose	30	762	1.26	0.96	2,420	1098	43,712	194.4	41,389	184.1	36,153	160.8	31,216	138.8	69.5	1765	4
High Capacity	36	914	1.56	1.19	2,550	1157	43,712	194.4	41,389	184.1	36,153	160.8	31,216	138.8	69.5	1765	4
	42	1067	1.85	1.41	2,710	1229	43,712	194.4	41,389	184.1	36,153	160.8	31,216	138.8	69.5	1765	5
	48	1219	2.15	1.64	2,815	1277	43,712	194.4	41,389	184.1	36,153	160.8	31,216	138.8	69.5	1765	5
	54	1372	2.45	1.87	2,982	1353	43,712	194.4	41,389	184.1	36,153	160.8	31,216	138.8	69.5	1765	6
	60	1524	2.74	2.09	3,089	1401	43,712	194.4	41,389	184.1	36,153	160.8	31,216	138.8	69.5	1765	7

### 330C LC / 370C Buckets (continued)

A full line of buckets is offered to meet a wide variety of applications. Digging forces are with power boost. The buckets have an adjustable bushing for side clearance, with the exception of the ditching bucket. Tooth selection includes either the John Deere Fanggs<sup>®</sup>, Standard, Tiger, Twin Tiger, Abrasion panel, or Flare tooth, or the ESCO (Vertalok) Standard, Tiger, Twin Tiger, or Flare tooth. Replaceable cutting edges are available through John Deere parts. Optional side cutters add 6 inches (150 mm) to bucket widths.

Type Bucket	Bucket Width		Bucket Capacity*		Weight		Bucket Dig Force		Arm Dig Force 8 ft. 9 in. (2.66 m)		Arm Dig Force 10 ft. 6 in. (3.2 m)		Arm Dig Force 13 ft. 1 in. (4.0 m)		Bucket Tip Radius		No. Teeth
	in.	mm	cu. yd.	m <sup>3</sup>	lb.	kg	lb.	kN	lb.	kN	lb.	kN	lb.	kN	in.	mm	
	Heavy-Duty Plate Lip	36	914	1.48	1.13	2,138	970	48,220	214.5	43,000	191.3	37,396	166.3	32,136	142.9	63.0	
	42	1067	1.75	1.34	2,210	1002	48,220	214.5	43,000	191.3	37,396	166.3	32,136	142.9	63.0	1600	5
	48	1219	2.03	1.55	2,324	1054	48,220	214.5	43,000	191.3	37,396	166.3	32,136	142.9	63.0	1600	6
	54	1372	2.30	1.76	2,557	1160	48,220	214.5	43,000	191.3	37,396	166.3	32,136	142.9	63.0	1600	6
Heavy-Duty High Capacity	30	762	1.26	0.96	2,516	1141	43,712	194.4	41,389	184.1	36,158	160.8	31,216	138.8	69.5	1765	4
	36	914	1.56	1.19	2,781	1261	43,712	194.4	41,389	184.1	36,158	160.8	31,216	138.8	69.5	1765	4
	42	1067	1.85	1.41	3,120	1415	43,712	194.4	41,389	184.1	36,158	160.8	31,216	138.8	69.5	1765	5
	48	1219	2.15	1.64	3,318	1505	43,712	194.4	41,389	184.1	36,158	160.8	31,216	138.8	69.5	1765	6
	54	1372	2.45	1.87	3,562	1616	43,712	194.4	41,389	184.1	36,158	160.8	31,216	138.8	69.5	1765	6
Severe-Duty Cast Lip	42	1067	1.75	1.34	2,774	1258	46,730	207.9	42,486	189.0	37,003	164.6	32,222	143.3	65.0	1651	5
	48	1219	2.03	1.55	2,815	1277	46,730	207.9	42,486	189.0	37,003	164.6	32,222	143.3	65.0	1651	5
Severe-Duty Plate Lip	30	762	1.26	0.96	2,850	1293	41,038	182.5	40,347	179.5	34,010	151.3	26,940	119.8	74.0	1880	3
	36	914	1.56	1.19	3,024	1372	41,038	182.5	40,347	179.5	34,010	151.3	26,940	119.8	74.0	1880	4
	42	1067	1.85	1.41	3,343	1516	41,038	182.5	40,347	179.5	34,010	151.3	26,940	119.8	74.0	1880	4
	48	1219	2.15	1.64	3,522	1598	41,038	182.5	40,347	179.5	34,010	151.3	26,940	119.8	74.0	1880	5
Ditching	72	1829	1.66	1.27	2,531	1148	59,576	265.0	46,306	206.0	39,933	177.7	33,987	151.2	51.0	1295	0
	84	2134	3.42	2.61	3,369	1528	48,220	214.5	43,000	141.3	37,396	166.3	32,136	142.9	63.0	1600	0

\*All capacities are SAE heaped ratings.

### Bucket Selection Guide

#### 330C LC

#### 370C

Material (loose weight)	330C LC		370C	
	General-Purpose Bucket*	Heavy-Duty Bucket*	General-Purpose Bucket*	Heavy-Duty Bucket*
Wood chips – 700 lb./cu. yd. (420 kg/m <sup>3</sup> )	9.0 cu. yd. (6.9 m <sup>3</sup> )	—	9.0 cu. yd. (6.9 m <sup>3</sup> )	—
Peat, dry – 750 lb./cu. yd. (440 kg/m <sup>3</sup> )	8.0 cu. yd. (6.1 m <sup>3</sup> )	—	8.0 cu. yd. (6.1 m <sup>3</sup> )	—
Cinders – 950 lb./cu. yd. (560 kg/m <sup>3</sup> )	5.5 cu. yd. (4.2 m <sup>3</sup> )	—	5.5 cu. yd. (4.2 m <sup>3</sup> )	—
Peat, wet – 1,170 lb./cu. yd. (690 kg/m <sup>3</sup> )	5.0 cu. yd. (3.8 m <sup>3</sup> )	—	5.0 cu. yd. (3.8 m <sup>3</sup> )	—
Topsoil – 1,600 lb./cu. yd. (950 kg/m <sup>3</sup> )	4.0 cu. yd. (3.0 m <sup>3</sup> )	—	4.0 cu. yd. (3.0 m <sup>3</sup> )	—
Coal – 1,780 lb./cu. yd. (1050 kg/m <sup>3</sup> )	3.5 cu. yd. (2.7 m <sup>3</sup> )	3.25 cu. yd. (2.5 m <sup>3</sup> )	3.5 cu. yd. (2.7 m <sup>3</sup> )	3.25 cu. yd. (2.5 m <sup>3</sup> )
Caliche – 2,100 lb./cu. yd. (1250 kg/m <sup>3</sup> )	1.75–2.5 cu. yd. (1.3–1.9 m <sup>3</sup> )	1.5–2.5 cu. yd. (1.1–1.9 m <sup>3</sup> )	1.75–2.5 cu. yd. (1.3–1.9 m <sup>3</sup> )	1.5–2.5 cu. yd. (1.1–1.9 m <sup>3</sup> )
Earth, loam – 2,100 lb./cu. yd. (1250 kg/m <sup>3</sup> )	2.75 cu. yd. (2.1 m <sup>3</sup> )	2.5 cu. yd. (1.9 m <sup>3</sup> )	2.75 cu. yd. (2.1 m <sup>3</sup> )	2.5 cu. yd. (1.9 m <sup>3</sup> )
Shale – 2,250 lb./cu. yd. (1330 kg/m <sup>3</sup> )	2.75 cu. yd. (2.1 m <sup>3</sup> )	2.5 cu. yd. (1.9 m <sup>3</sup> )	2.75 cu. yd. (2.1 m <sup>3</sup> )	2.5 cu. yd. (1.9 m <sup>3</sup> )
Sand, dry – 2,400 lb./cu. yd. (1420 kg/m <sup>3</sup> )	2.75 cu. yd. (2.1 m <sup>3</sup> )	2.5 cu. yd. (1.9 m <sup>3</sup> )	2.75 cu. yd. (2.1 m <sup>3</sup> )	2.5 cu. yd. (1.9 m <sup>3</sup> )
Clay, dry – 2,500 lb./cu. yd. (1480 kg/m <sup>3</sup> )	2.0–2.5 cu. yd. (1.5–1.9 m <sup>3</sup> )	1.75–2.25 cu. yd. (1.3–1.7 m <sup>3</sup> )	2.0–2.5 cu. yd. (1.5–1.9 m <sup>3</sup> )	1.75–2.25 cu. yd. (1.3–1.7 m <sup>3</sup> )
Earth, dry – 2,550 lb./cu. yd. (1510 kg/m <sup>3</sup> )	2.0–2.5 cu. yd. (1.5–1.9 m <sup>3</sup> )	1.75–2.25 cu. yd. (1.3–1.7 m <sup>3</sup> )	2.0–2.5 cu. yd. (1.5–1.9 m <sup>3</sup> )	1.75–2.25 cu. yd. (1.3–1.7 m <sup>3</sup> )
Limestone, broken or crushed – 2,600 lb./cu. yd. (1540 kg/m <sup>3</sup> )	1.63–2.25 cu. yd. (1.2–1.7 m <sup>3</sup> )	1.5–2.0 cu. yd. (1.1–1.5 m <sup>3</sup> )	1.63–2.25 cu. yd. (1.2–1.7 m <sup>3</sup> )	1.5–2.0 cu. yd. (1.1–1.5 m <sup>3</sup> )
Earth, wet – 2,700 lb./cu. yd. (1600 kg/m <sup>3</sup> )	2.0–2.5 cu. yd. (1.5–1.9 m <sup>3</sup> )	1.75–2.25 cu. yd. (1.3–1.7 m <sup>3</sup> )	2.0–2.5 cu. yd. (1.5–1.9 m <sup>3</sup> )	1.75–2.25 cu. yd. (1.3–1.7 m <sup>3</sup> )
Clay, wet – 2,800 lb./cu. yd. (1660 kg/m <sup>3</sup> )	2.0–2.5 cu. yd. (1.5–1.9 m <sup>3</sup> )	1.75–2.25 cu. yd. (1.3–1.7 m <sup>3</sup> )	2.0–2.5 cu. yd. (1.5–1.9 m <sup>3</sup> )	1.75–2.25 cu. yd. (1.3–1.7 m <sup>3</sup> )
Rock, granite, blasted and broken – 2,800 lb./cu. yd. (1660 kg/m <sup>3</sup> )	1.63–2.75 cu. yd. (1.2–2.1 m <sup>3</sup> )	1.5–2.5 cu. yd. (1.1–1.9 m <sup>3</sup> )	1.63–2.75 cu. yd. (1.2–2.1 m <sup>3</sup> )	1.5–2.5 cu. yd. (1.1–1.9 m <sup>3</sup> )
Sand, moist – 2,850 lb./cu. yd. (1690 kg/m <sup>3</sup> )	2.25 cu. yd. (1.7 m <sup>3</sup> )	2.1 cu. yd. (1.6 m <sup>3</sup> )	2.25 cu. yd. (1.7 m <sup>3</sup> )	2.1 cu. yd. (1.6 m <sup>3</sup> )
Sand and gravel, dry – 2,900 lb./cu. yd. (1720 kg/m <sup>3</sup> )	2.25 cu. yd. (1.7 m <sup>3</sup> )	2.1 cu. yd. (1.6 m <sup>3</sup> )	2.25 cu. yd. (1.7 m <sup>3</sup> )	2.1 cu. yd. (1.6 m <sup>3</sup> )
Sand, wet – 3,100 lb./cu. yd. (1840 kg/m <sup>3</sup> )	2.15 cu. yd. (1.6 m <sup>3</sup> )	2.0 cu. yd. (1.5 m <sup>3</sup> )	2.15 cu. yd. (1.6 m <sup>3</sup> )	2.0 cu. yd. (1.5 m <sup>3</sup> )
Sand and gravel, wet – 3,400 lb./cu. yd. (2020 kg/m <sup>3</sup> )	2.0 cu. yd. (1.5 m <sup>3</sup> )	1.85 cu. yd. (1.4 m <sup>3</sup> )	2.0 cu. yd. (1.5 m <sup>3</sup> )	1.85 cu. yd. (1.4 m <sup>3</sup> )

\*Contact your John Deere dealer for optimum bucket and attachment selections. These recommendations are for general conditions and average use. Larger buckets may be possible for flat and level operations, less compacted materials, and volume loading applications such as mass excavation applications in ideal conditions. Smaller buckets are recommended for adverse conditions such as off-level applications and uneven surfaces. Bucket capacity indicated is SAE heaped.

330C LC	370C	Engine
●	●	Auto-idle system
●	●	Automatic belt tension device
●	●	Batteries (two 12 volt), 180-min. reserve capacity
●	●	Coolant recovery tank
●	●	Dual element dry-type air filter
●	●	Electronic engine control with diagnostics capability
●	●	Enclosed fan guard (conforms to SAE J1308)
●	●	Engine coolant to -34°F (-37°C)
●	●	Fuel filter with water separator
●	●	Full-flow oil filter
●	●	Radiator trash screen
●	●	Tier II EPA off-road emission compliant
●	●	Turbocharger with charge air cooler
●	●	Underhood muffler with vertical curved end exhaust stack
▲	▲	Electric ether starting aid
▲	▲	Engine coolant heater
<b>Hydraulic System</b>		
●	●	Reduced-drift valve for boom down, arm in
●	●	Auxiliary hydraulic valve section
●	●	Spring-applied, hydraulically released automatic swing brake
▲	▲	Auxiliary hydraulic lines
▲	▲	Auxiliary pilot and electric controls
▲	▲	Hydraulic filter restriction indicator kit
▲	▲	Load-lowering control device
▲	▲	Single pedal propel control
<b>Undercarriage</b>		
●	●	Planetary drive with axial piston motors
●	●	Propel motor shields
●	●	Track guides, front idler and center
●	●	Triple semi-grouser shoes, 32 in. (800 mm)
▲	▲	Triple semi-grouser shoes, 24 in. (600 mm)
●	●	Triple semi-grouser shoes, 30 in. (750 mm)
●	●	Two-speed propel with automatic shift
●	●	Upper carrier rollers (2)
<b>Upperstructure</b>		
●	●	Right- and left-hand mirrors
●	●	Vandal locks with ignition key: Cab door / Fuel cap / Service doors

330C LC	370C	Front Attachments
●	●	Bucket-to-arm clearance adjustable bushing (except ditching buckets)
●	●	Centralized lubrication system
●	●	Dirt seals on all bucket pins
●	●	No-boom-arm option
▲	▲	Arm, 8 ft. 9 in. (2.66 m)
▲	▲	Arm, 10 ft. 6 in. (3.2 m)
▲	▲	Arm, 13 ft. 1 in. (4.0 m)
▲	▲	Attachment quick couplers
▲	▲	Boom cylinder with plumbing to main-frame for no-boom-arm option
▲	▲	Buckets: Ditching / General purpose / General-purpose high capacity / Heavy duty / Heavy-duty high capacity / Severe-duty cast lip / Severe-duty plate lip / Side cutters and teeth
▲	▲	Laser depth systems
▲	▲	Material clamps
▲	▲	Super-long fronts
<b>Operator's Station</b>		
●	●	Adjustable independent control positions (levers-to-seat, seat-to-pedals)
●	●	AM/FM radio
●	●	Auto climate control/air conditioner, 20,000 Btu/hr. (5.9 kW) with heater and pressurizer
●	●	Built-in Operator's Manual storage compartment and manual
●	●	Coat hook
●	●	Deluxe suspension cloth seat with 4-in. (100 mm) adjustable armrests
●	●	Floor mat
●	●	Front windshield wiper with intermittent speeds
●	●	Gauges (illuminated): Engine coolant / Fuel
●	●	Horn, electric
●	●	Hourmeter, electric
●	●	Hydraulic shutoff lever, all controls
●	●	Hydraulic warm-up control
●	●	Interior light
●	●	Large cup holder
●	●	Mode selectors (illuminated): Power modes - four / Travel modes - two with automatic shift / Work modes - four

330C LC	370C	Operator's Station (continued)
●	●	Monitor system with alarm features: Auto-idle/auto-acceleration indicator light / Engine air cleaner restriction indicator light / Engine check / Engine coolant temperature indicator light with audible alarm / Engine oil pressure indicator light with audible alarm / Fluid level: Engine coolant level indicator light, engine oil level indicator light, and hydraulic oil level indicator light / Low alternator charge indicator light / Low fuel indicator light / Wiper mode indicator / Work lights on indicator / Work mode indicator
▲	▲	Monitor system with alarm features: Hydraulic oil filter restriction indicator light
●	●	Motion alarm with cancel switch (conforms to SAE J994)
●	●	Power boost switch on right control lever
●	●	Propel pedals and levers
●	●	SAE two-lever control pattern
●	●	Seat belt, 2 in. (51 mm), retractable
▲	▲	Seat belt, 3 in. (76 mm), non-retractable
●	●	Tinted glass
●	●	Transparent tinted overhead hatch
▲	▲	24- to 12-volt D.C. radio converters, 10 amp
▲	▲	Alternate pilot control pattern
▲	▲	Circulation fan
▲	▲	Protection screens for cab front, rear, and side
▲	▲	Window vandal protection covers
<b>Electrical</b>		
●	●	45-amp alternator
●	●	Blade-type multi-fused circuits
●	●	Positive terminal battery covers
▲	▲	Cab extension wiring harness
▲	▲	DeereTrax™ Equipment Tracking System
<b>Lights</b>		
●	●	Work lights: Halogen / One mounted on boom / One mounted on frame

## Control Owning and Operating Costs

Total Repair Cost Management (TRCM) is part of John Deere's proactive, fix-before-fail strategy on machine maintenance that will help control costs, increase profits, and reduce stress. Included in this comprehensive lineup of ongoing programs and services are:

**OilScan® Plus program** – tells you what's going on inside *all* of your machine's major components so you'll know if there's a problem *before* you see a decline in performance. OilScan Plus oil analysis is included in most SECURE®-Extended warranty and preventive-maintenance agreements.

**Component life-cycle data** – gives you vital information on the projected life span of components and lets you make informed decisions on machine maintenance by telling you approximately how many hours of use you can expect from an engine, transmission, or hydraulic pump. This information can be used to preempt catastrophic downtime by servicing major components at about 80 percent of their life cycle.

**Preventive Maintenance (PM) agreements** – give you a fixed cost for maintaining a machine for a given period of time. They also help you avoid downtime by ensuring that critical maintenance work gets done right and on schedule. On-site preventive maintenance service performed where and when you need it helps protect you from the expense of catastrophic failures and lets you avoid waste-disposal hassles.

**SECURE-Extended warranty** – gives you a fixed cost for machine repairs for a given period of time so you can effectively manage costs. Whether you work in a severe-service setting or just want to spread the risk of doing business, this is a great way to custom-fit coverage for your operation. And a SECURE-Extended contract also travels well because it's backed by John Deere and is honored by *all* Deere construction dealers.

**Customer Support Advisors (CSAs)** – Deere believes the CSA program lends a *personal* quality to Total Repair Cost Management. Certified CSAs have the knowledge and skills for helping make important decisions on machine maintenance and repair. Their mission is to help you implement a plan that's right for *your* business and take the burden of machine maintenance off your shoulders.



JOHN DEERE

Net engine power is with standard equipment including air cleaner, exhaust system, alternator, and cooling fan, at standard conditions per SAE J1349 and DIN 6270B, using No. 2-D fuel at 35 API gravity. No derating is required up to 10,000-ft. (3050 m) altitude. Gross power is without cooling fan.

Specifications and design subject to change without notice. Wherever applicable, specifications are in accordance with PCSA and SAE standards. Except where otherwise noted, these specifications are based on units with 13-ft. 1-in. (4.0 m) arms; 54-in. (1370 mm), 2.3-cu. yd. (1.76 m³) buckets; full fuel tanks; and 175-lb. (79 kg) operators; 330C LC with 32-in. (800 mm) triple semi-grouser shoes and 15,018-lb. (6812 kg) counterweight; and 370C with 30-in. (750 mm) triple semi-grouser shoes and 15,670-lb. (7562 kg) counterweight.

