

The Case logo consists of the word "Case" in a stylized, bold, sans-serif font. The letters are white and are set against a black background that features a series of vertical bars of varying heights, resembling a barcode or a stylized ladder.

1155D Loader



110 (82 kW) NET FLYWHEEL HORSEPOWER

Six cylinder, 504 in³ (8259 cm³) Case diesel engine

FULL POWERSHIFT TRANSMISSION

Modulated power shift with torque converter for smooth directional changes and positive control

SINGLE LEVER BUCKET CONTROL

Low lever effort and ease of operation

COUNTER-ROTATING TRACKS

Turn in the length of the tractor

**CONTROLLED TRANSMISSION STEERING OR
BRAKE STEERING**

Choice of power turns or brake turns for operator convenience and performance

IN-LINE LOADER LINKAGE

Excellent visibility of work area and bucket

Unit shown is equipped with non-standard items.

J I Case

A Tenneco Company

Construction Equipment Division
700 State Street Racine, WI 53404 U.S.A.



1155D LOADER SPECIFICATIONS

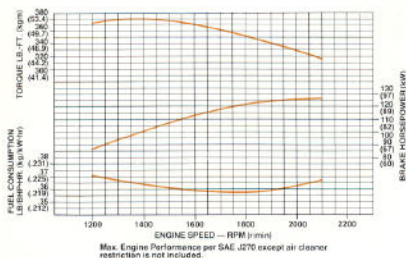
ENGINE

Case model A504BD, 4-cycle, naturally aspirated diesel. Open chamber design. Uses No. 2 diesel fuel. Seven main bearings. Positive pressure oil lubrication with full flow filtering and internal cooling. Multiple cylinder heads. Aluminum alloy pistons with full skirt, three ring design. 24-volt direct electric starting. Dry type, dual element air cleaner with service indicator. Two-stage full flow spin-on fuel filters.

Maximum rated horsepower

(1) Gross	125 @ 2100 rpm
	(93 kW @ 2100 r/min)
(2) SAE net	110 @ 2100 rpm
	(82 kW @ 2100 r/min)
Displacement	504 in ³ (8259 cm ³)
Number cylinders	6
Bore and stroke	4.625" x 5"
	(117.5 mm x 127 mm)
Compression ratio	16:1
Torque, maximum, lbs-ft (kg m)	
Sea level, 60°F (15°C)	375 @ 1400 rpm
	(51.8 @ 1400 r/min)
500' (152 m) altitude, 85°F (29°C)	354 @ 1400 rpm
	(49.1 @ 1400 r/min)

- (1) Manufacturer's rating of maximum engine power at flywheel in accordance to SAE specification J270. Corrected to 29.00" Hg (1.0 kg/cm²) and 85° F (29.4° C) Dry Air.
- (2) SAE net flywheel power of engine equipped with oil and water pump, alternator, air cleaner, fan and muffler. Corrected to 29.00" Hg (1.0 kg/cm²) and 85° F (29.4° C).



TORQUE CONVERTER

Single stage, hydrokinetic type, 13" (330 mm) diameter with 2.89:1 ratio.

TRANSMISSION

Constant mesh, four speed full powershift with modulation permitting directional changes under full throttle. Four speeds forward and four speeds reverse.

TRAVEL SPEEDS

	1st		2nd		3rd		4th	
	mph	km/h	mph	km/h	mph	km/h	mph	km/h
Forward	2.1	3.4	3.0	4.8	4.3	6.9	6.1	9.8
Reverse	2.5	4.0	3.6	5.8	5.0	8.0	7.3	11.8

STEERING

Steering controlled by independent hydraulic clutches in transmission or by multiple disc power brakes. Four types of turns: power turns, gradual turns, counter-rotation, and brake turns.

FINAL DRIVES

Spur and bull gear type, single reduction. One-piece line-bored case with final drive seal guards.

BRAKES

Two multiple disc power brakes, oil cooled, independently controlled by power brake pedals for steering. Center pedal for controlled braking. Separate pedal provides braking without disengaging transmission. Hand operated over-center parking brake.

UNDERCARRIAGE

Sealed track, hydraulic track adjusters. Track rollers, carrier rollers and drum type idlers are permanently lubricated. Solid disc hunting tooth sprockets. Reinforced box section track roller frame.

Track frame	Rigid
Track rollers (each side)	6
Carrier rollers (each side)	1
Track gauge	62" (1574 mm)
Length of track on ground	86.7' (2202 mm)
Shoes per track	40
Track shoe width	16" (406 mm)
Area, track on ground	16' (406 mm) shoe 2770 in ² (1.79 m ²)
Height of grouser	2 bar 1.17" (29.7 mm)
	3 bar .81" (20.6 mm)

BUCKET CONTROLS

Single lever control for bucket lift and dump with positive-hold regenerative "float" position in lift circuit. Positive-hold "rollback" position in dump circuit. Return-to-dig and low pressure regeneration in all circuits.

LOADER HYDRAULIC SYSTEM

Pump: Gear type torque converter mounted, driven from engine, 50 gpm @ 2100 rpm (189.3 litre/min @ 2100 r/min).

Control valve: Open center, parallel with pressure compensation and low pressure regeneration.

System relief pressure: 2350 psi (165 kg/cm²).

Hydraulic lines: Steel tubing with flared fittings and wire-braid high pressure hose with crimped full flow fittings.

Cylinders: Double acting with hardened, chrome plated rods.

Lift (1)	5.0" dia x 31.45" stroke, 2.25" rod
	(127 mm dia x 799 mm stroke, 57 mm rod)
Bucket (2)	4.5" dia x 32.0" stroke, 2.25" rod
	(114 mm dia x 813 mm stroke, 57 mm rod)

Hydraulic cycle time:

Rated load in bucket	Seconds
Raise	6.6
Dump	1.9
Lower (float down) (Bucket empty)	4.2

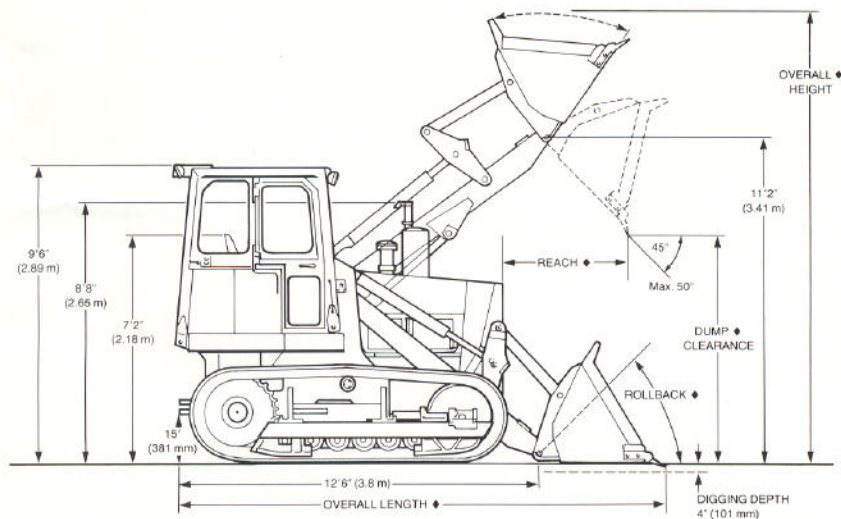
SERVICE REFILL CAPACITIES

	U.S. Gals	Litres
Fuel tank	52	197
Engine crankcase (with filter)	6.75	25.5
Hydraulic system	15	57
Transmission and torque converter	15	57
Final drives (each side)	2	7.6
Cooling system	13	49

GENERAL DIMENSIONS

Overall width at track, 16" (406 mm) shoe	78" (1981 mm)
Ground clearance	13" (330 mm)
Turning clearance circle (counter-rotate turn)	23' (7.16 m)
Grading angle	104°

OPERATING DIMENSIONS



◆ OVERALL LENGTHS:

Loader with ripper raised	18'10" (5.74 m)
Loader with winch	17'3.5" (5.27 m)

◆ Varies with bucket size.
Refer to Performance Specifications

PERFORMANCE SPECIFICATIONS

BUCKET TYPE — Capacity
SAE rated nominally heaped

GENERAL PURPOSE
1.75 yd³ (1.33 m³)

4-IN-1*
1.75 yd³ (1.33 m³)

Struck capacity	1.52 yd ³ (1.16 m ³)	1.46 yd ³ (1.11 m ³)
Bucket weight (less teeth)	1620 lbs (735 kg)	2,480 lbs (1125 kg)
Bucket width	81.2" (2062 mm)	81.2" (2062 mm)
Breakout force	20,200 lbs (9157 kgf)	18,850 lbs (8545 kgf)
Maximum lift capacity	10,100 lbs (4581 kg)	9100 lbs (4128 kg)
Bucket rollback at ground line at 18° (457 mm) carry	40°	45°
Dump clearance @ full lift—45° discharge	8'8" (2.64 m)	8'7" (2.62 m)
Reach @ 45° discharge angle, 7' (2.13 m) clearance	53.8" (1366 mm)	58" (1473 mm)
Reach @ full lift, 45° discharge	40.8" (1036 mm)	45.3" (1150 mm)
Overall length	15'9" (4.8 m)	16'4" (4.98 m)
Overall height	15'4" (4.67 m)	15'3" (4.65 m)
SAE static tipping load*	16,870 lbs (7652 kg)	16,870 lbs (7652 kg)
Operating weight (approx.)*	25,780 lbs (11 694 kg)	27,540 lbs (12,492 kg)

* Operating weight and weight distribution may vary with the addition of optional equipment. 2000 lb (907 kg) counterweight included for general purpose bucket. 2900 lb (1315 kg) counterweight included for 4-in-1 bucket.

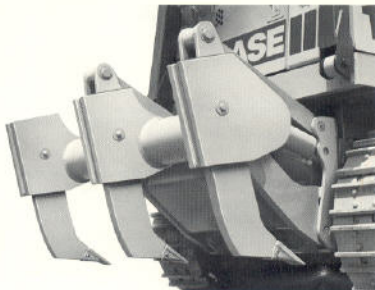
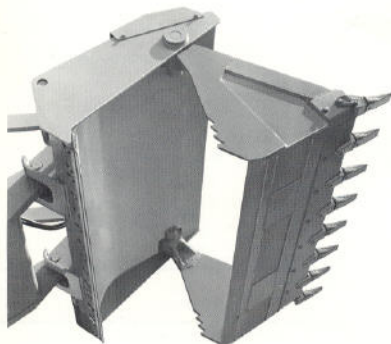
OPTIONAL EQUIPMENT

	Approximate add-on			
	Weight		Tipping load	
	lbs	kg	lbs	kg
Bucket teeth	136	61.7	-50	-23
Cab	507	230	600	272
Counterweight* w/drawbar	2000	907	3350	1520
Counterweight* w/drawbar	2900	1315	4858	2204
Hook, front pull	20	9.1	—	—
Muffler, spark arresting	n.c.	n.c.	—	—
Noise suppression kit	160	72.6	—	—
Normalizing turbocharger	25	11.3	—	—
Ripper, three tooth w/drawbar	200	91	500	227
Rock guards	625	283	380	172
ROPS, canopy*	565	256	670	304
ROPS, front sweeps	175	79.4	60	27
Track guides, front and rear	260	127	170	77
Winch	-500	-227	-650	-295
Winch, fairlead (3 roller)	350	159	1100	499
Winch, integral arch (three roller)	755	343	1300	590
Fourth roller for arch	35	15.8	65	29

*Included in Operating Weight

4-IN-1 BUCKET

Width of moldboard cutting edge	82.2" (2088 mm)
Moldboard height	49" (1244 mm)
Maximum clam opening	51.3" (1303 mm)
Dump clearance @ full lift (using clam)	11'0" (3.35 m)



RIPPER

Type	Parallelogram
Overall width	66" (1676 mm)
Maximum penetration	17" (432 mm)
Ground clearance (at carry)	12" (305 mm)
Number of shanks	3
Shank spacing	31" (787 mm)
Ripper tips	Replaceable
Hydraulic cylinders (2)	4" dia. x 10.0" stroke, 2" rod (102 mm dia x 254 mm stroke, 51 mm rod)
Weight	2200 lbs (998 kg)

STANDARD EQUIPMENT

Dry two stage air cleaner with service indicator. Precleaner. 40 amp alternator and voltage regulator. Pusher fan. Master disconnect key switch. Neutral safety start mechanism. Color-coded international symbol gauges. Tachometer. Suspension seat. Over-center parking brake. Tool box. Permanently lubricated track rollers. Sealed track. Hydraulic track adjusters. Engine sideshields. Full bottom transmission guard. Crankcase guard. Radiator guard. Muffler. ROPS canopy with seat belt. Return-to-dig. Anti-vandalism package. Lights. Drawbar.

NOTE: All specifications are stated in accordance with ICED Definitions or SAE Standards or Recommended Practices, where applicable.

IMPORTANT

J I Case Company reserves the right to change these specifications without notice and without incurring any obligation relating to such change.

Sold and serviced by: