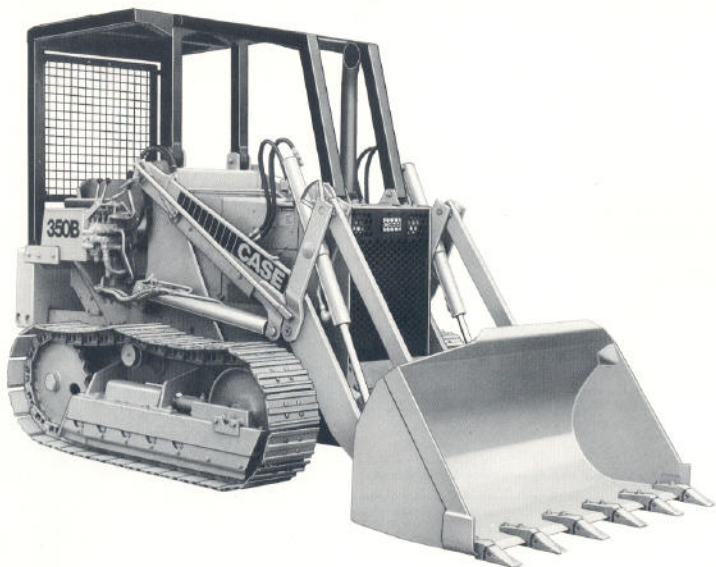


**case**

# 350B Loader

**39 (29 kW) NET FLYWHEEL HORSEPOWER**

Four cylinder, 188 in<sup>3</sup> (3081 cm<sup>3</sup>) Case diesel engine

**TRANSMISSION**

Three speed transmission with power shuttle

**POWER TURNS**

Turns with power on both tracks

**IN-LINE LOADER LINKAGE**

Excellent visibility of work area and bucket

**SINGLE LEVER LOADER CONTROL**

Low lever effort and ease of operation

Unit shown is equipped with non-standard items.

**J I Case**

A Tenneco Company

700 State Street Racine, WI 53404 U.S.A.



## 350B SPECIFICATIONS

### ENGINE

Case model G188D, 4-cycle, naturally aspirated diesel. Open chamber design. Uses No. 2 diesel fuel. Five main bearings. Positive pressure oil lubrication with full flow filtering and internal cooling. Aluminum alloy pistons with full skirt, three ring design. 12-volt direct electric starting. Dry type, dual element air cleaner with evacuator and service indicator. Two stage full flow replaceable element fuel filters.

#### Maximum rated horsepower

(1) Gross .....	44 @ 2000 rpm	(32.81 kW @ 2000 r/min)
(2) SAE net .....	39 @ 2000 rpm	(29.08 kW @ 2000 r/min)
Displacement .....	188 in <sup>3</sup> (3081 cm <sup>3</sup> )	
Number of cylinders .....	4	
Bore and stroke .....	3.8125" x 4.125"	(97 mm x 105 mm)
Compression ratio .....	17.5 to 1	
Torque, maximum, lbs-ft (Nm) .....	133 @ 1300 rpm	(180 @ 1300 r/min)
Sea level, 60°F (15°C) .....	128 @ 1300 rpm	(174 @ 1300 r/min)
500' (152 m) altitude, 85°F (29°C) .....		

(1) Manufacturer's rating of maximum engine horsepower at flywheel when equipped with oil and water pumps. Fuel set maximum quantity for this application. Corrected to sea level: 29.92" (760 mm) Hg and 60°F (15°C) dry air.

(2) SAE net flywheel horsepower of engine as applied to this vehicle when equipped with operating accessories including oil and water pumps, alternator, air cleaner, fan and muffler. Corrected to 500' (152 m) altitude with .38" (9.5 mm) Hg vapor pressure 29.38" (746 mm) Hg observed barometer and 85°F (29°C) air.

### TORQUE CONVERTER

Single stage, hydrokinetic type, 11" (280 mm) diameter with 2.78:1 ratio.

### TRANSMISSION

Sliding spur gear with power shuttle permitting directional changes. Three speeds forward and three speeds reverse.

### TRAVEL SPEEDS

	1st		2nd		3rd	
	mph	km/h	mph	km/h	mph	km/h
Forward	1.85	3.0	2.95	4.8	4.85	7.8
Reverse	1.85	2.7	2.65	4.3	4.40	7.1

### STEERING

Controlled planetary differential steering with power to both tracks while turning.

### FINAL DRIVES

Spur and bull gear type, single reduction.

### BRAKES

Hand operated control levers with parking locks. Foot operated brake pedal which applies brake to both tracks.

### UNDERCARRIAGE

Sealed track, hydraulic track adjusters. Solid front idler. Solid disc hunting tooth sprockets and three bar semi-grousers.

Track frame .....	Rigid
Track rollers (each side) .....	5
Carrier rollers (each side) .....	1
Track gauge .....	48" (1219 mm)
Length of track on ground .....	63" (1600 mm)
Shoes per track .....	33
Track shoe widths available .....	12" (305 mm) 14" (356 mm)
Area, track on ground .....	(12" shoe) 1612 in <sup>2</sup> (9755 cm <sup>2</sup> )
	(14" shoe) 1764 in <sup>2</sup> (11381 cm <sup>2</sup> )

### LOADER CONTROLS

Single lever control for bucket lift and dump with positive-hold regenerative "float" position in lift circuit.

### LOADER HYDRAULIC SYSTEM

**Pump:** Gear type, front mounted, direct drive. 16.5 gpm @ 2000 rpm (62.5 lit/min @ 2000 r/min).

**Control valve:** Open center, parallel circuit.

**System relief pressure:** 2200 psi (15 170 kPa).

**Hydraulic lines:** Steel tubing with flared fittings and wire-braid high pressure hose with crimped full flow fittings.

**Cylinders:** Double acting with hardened, chrome plated rods.

Lift (2) .....	3.0" dia x 31.0" stroke, 1.75" rod
	(76 mm dia x 788 mm stroke, 44 mm rod)
Bucket (2) .....	2.5" dia x 26.25" stroke, 1.5" rod
	(64 mm dia x 665 mm stroke, 38 mm rod)

#### Hydraulic cycle time:

Rated load in bucket .....	Seconds
Raise .....	6.5
Dump .....	1.3
Lower (float down) .....	3.7

### SERVICE REFILL CAPACITIES

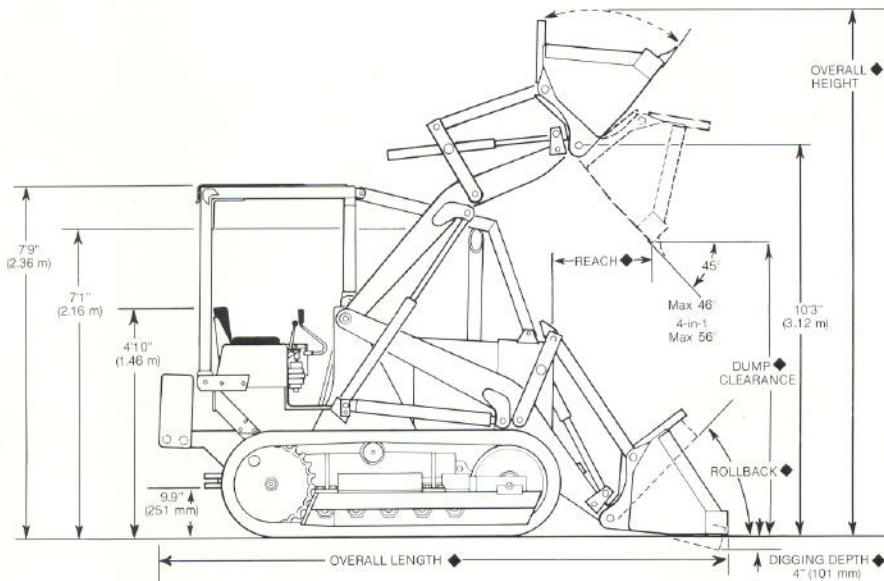
	U.S. Gal	Litres
Fuel tank .....	16	60.6
Engine crankcase (with filter) .....	1.75	6.6
Hydraulic system .....	8	30.0
Transmission and final drives .....	2.35	8.8
Shuttle and torque converter .....	2.25	8.5
Cooling system .....	3.5	13.2

### GENERAL DIMENSIONS

Overall width (at track, 12" shoes) .....	60.2" (1529 mm)
Ground clearance (at drawbar) .....	9.9" (251 mm)
Turning clearance circle .....	21.5 (6.55 m)
Grading angle .....	11°
Overall length .....	
Loader with ripper raised .....	13'9" (4.19 m)
Loader with winch .....	12'11" (3.94 m)



## OPERATING DIMENSIONS



◆ Varies with bucket size  
Refer to Performance Specifications

## PERFORMANCE SPECIFICATIONS

**BUCKET TYPE** - Capacity  
SAE rated nominally heaped

**GENERAL PURPOSE**  
.75 yd<sup>3</sup> (0.57 m<sup>3</sup>)

**4-in-1\***  
.75 yd<sup>3</sup> (0.57 m<sup>3</sup>)

Struck Capacity	686 yd <sup>3</sup> (0.52 m <sup>3</sup> )	.662 yd <sup>3</sup> (0.51 m <sup>3</sup> )
Bucket weight (less teeth)	600 lbs (272 kg)	1000 lbs (454 kg)
Bucket width	63" (1600 mm)	63" (1600 mm)
Breakout force	6000 lbs (22.69 kN)	5750 lbs (25.58 kN)
Maximum lift capacity	4400 lbs (1996 kg)	3900 lbs (1769 kg)
Bucket rollback at ground line	40°	38°
at 18" (457 mm) carry	46°	43°
Dump clearance @ full lift - 45° discharge	8'1" (2.47 m)	8'4" (2.53 m)
Reach @ 45° discharge angle, 7' (2.13 m) clearance	3'2" (965 mm)	3'6" (1074 mm)
Reach @ full lift, 45° discharge	2'3" (681 mm)	2'6" (762 mm)
Overall length	13'0" (3.96 m)	13'1" (4.0 m)
Overall height	13'2" (4.02 m)	13'2" (4.01 m)
Static tipping load*	6300 lbs (2859 kg)	5680 lbs (2576 kg)
Operating weight (approx.)*	9913 lbs (4495 kg)	10,313 lbs (4679 kg)

\*Includes ROPS, full fuel tank and 170 lb. (77.1 kg) operator. Operating weight and weight distribution may vary with the addition of optional equipment.

## OPTIONAL EQUIPMENT

	Approximate add-on-weight	
	lbs	kg
Backhoe, 12' (3.66 m) .....	2460	1111
Bucket teeth .....	60	27.2
Counterweight .....	1520	689
Counterweight for winch .....	1011	458
Drawbar (swinging) .....	94.2	42.7
Grille, heavy duty .....	8	3.6
Hook, front pull .....	10	4.5
Lights, 2 front, 1 rear .....	5	2.3
Lockup kit .....	39	17.7
Muffler, spark arresting .....	8.75	4
Noise suppression kit .....	43	19.5
Power take-off .....	120.2	54.5
Ripper, five tooth with counterweight .....	1977	897
Rock guards .....	165	74.7
ROPS, front sweeps .....	102	46.4
Screens, operator protective .....	88	40
Side shields, engine .....	29	13.2
Track chain and sprocket, heavy duty .....	167	76.5
Track rollers, sealed .....	120	54.4
Transmission guard, bottom .....	52.9	24
Winch .....	590	268
Winch fairlead (three roller) .....	90	41
Fourth roller .....	11	5
Winch drawbar .....	99.2	45

## STANDARD EQUIPMENT

Dual element air cleaner with evacuator and service indicator. Alternator and voltage regulator. Pusher fan. Key switch. Neutral safety start mechanism. Sealed track. Hydraulic track adjusters. Crankcase guard. Radiator guard. Muffler. Return-to-dig. Hour-meter. Instrument panel gauges. ROPS canopy with seat belt. Anti-sandblast screen.

## RIPPER

Overall width .....	60" (1524 mm)
Maximum penetration .....	13.5" (343 mm)
Ground clearance (at carry) .....	11" (279 mm)
Number of shanks .....	3 std - 5 opt
Shank spacing .....	3-27" (686 mm)
Ripper tips .....	5-13.5" (343 mm)
Hydraulic cylinder .....	Replaceable
3" dia x 10.5" stroke, 1.5" rod	
(76 mm dia x 267 mm stroke, 38 mm rod)	
Weight (5 tooth with counterweight) .....	1977 lbs (897 kg)



**NOTE:** All specifications are stated in accordance with ICED Definitions or SAE Standards or Recommended Practices, where applicable.

### IMPORTANT

J I Case Company reserves the right to change these specifications without notice and without incurring any obligation relating to such change.

**Sold and serviced by:**