



DATSUN FORKLIFT



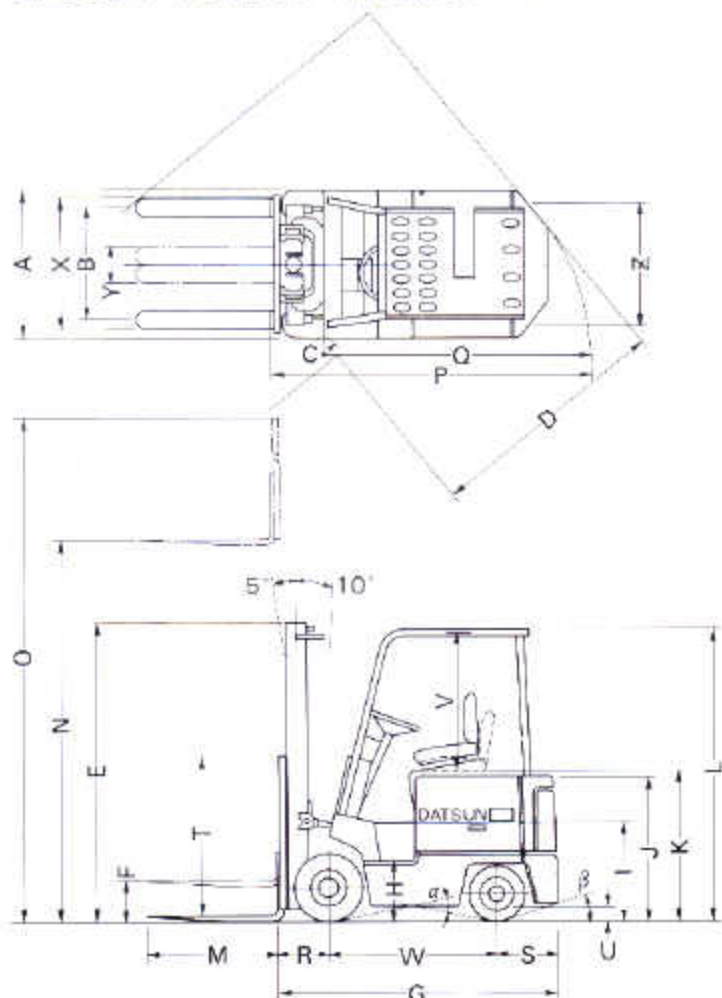
BOL
ELECTRIC SUPER SERIES
E2000 E2700 E3000
CUSHION TIRE

Datsun Super Series Electrics.

2,000, 2,700 & 3,000-Pound Clean Energizers—The Future In Forklifts Today!



E2000 • E2700 • E3000



Dimensions

Item	Model	Model		
		E2000 CUB01L10V	E2700 CUB01L14V	E3000 CUB01L15V
A	Overall width (single tires)	(in/mm)	38.0/965	
B	Front tread (single tires)	(in/mm)	31.5/800	
C	Min. inside turning radius	(in/mm)	1.8/45	
D	Right angle intersecting aisle (with standard forks)	(in/mm)	61.4/1560	
E	Overall height lowered (std.)	(in/mm)	82.9/2105	
F	Free lift (std.)	(in/mm)	16.9/430	
G	Overall length (without fork)	(in/mm)	75.0/1905	
H	Stop height	(in/mm)	15.0/405	
I	Floor height	(in/mm)	27.0/685	
J	Counterweight height	(in/mm)	39.6/1005	
K	Seat height (seated)	(in/mm)	41.7/1060	
L	Overhead guard height	(in/mm)	81.5/2070	
M	Fork length (std.)	(in/mm)	36.2/920	
N	Max. fork height	(in/mm)	130/3300	
O	Overall height mast extended	(in/mm)	178.5/4560	
P	Right angle stacking aisle (plus load length)	(in/mm)	78.8/2000	
Q	Min. outside turning radius	(in/mm)	65.8/1670	
R	Front overhang	(in/mm)	13.0/330	
S	Rear overhang	(in/mm)	15.2/385	
T	Backrest height (std.)	(in/mm)	49.8/1260	
U	Under steering axle center	(in/mm)	2.6/65	
V	Overhead guard height above seat	(in/mm)	39.4/1000	
W	Wheelbase	(in/mm)	46.9/1190	
X	Max. fork spread	(in/mm)	32.1/815	
Y	Min. fork spread	(in/mm)	8.1/205	
Z	Rear tread (single tires)	(in/mm)	30.3/770	
α	Ramp breakover angle	$\tan \alpha$ (%)	30	
β	Departure angle	$\tan \theta$ (%)	36	

Standard Performance

Model			E2000	E2700	E3000
			CUB01L10V	CUB01L14V	CUB01L15V
Capacity		(lbs/ton)	2000/1.0	2700/1.35	3000/1.5
Load center		(in/mm)	24/500		
Lifting speed	Loaded/unloaded	(in/sec)	14.4/17.7 [10.2/13.4]	13.4/17.7 [9.8/13.4]	13.0/17.7 [9.5/13.4]
		(mm/sec)	365/450 [260/340]	340/450 [250/340]	330/450 [240/340]
Lowering speed	Loaded/unloaded	(in/sec)	19.7/19.7		
		(mm/sec)	500/500		
Travel speed	Loaded/unloaded	(mph)	9.0/10.3 [8.8/7.5]	8.7/9.9 [8.8/7.5]	
		(km/h)	14.5/16.5 [11/12]	14/16 [11/12]	
Tires	Front size		18 × 6 × 12 ^{1/2}		
	Rear size		14 × 4 ^{1/2} × 8		
Weight distribution (battery/less)	Front unloaded	(lbs)	2485	2475	2410
		(kg)	1130	1123	1095
	Rear unloaded	(lbs)	1840	1930	2270
		(kg)	835	875	1030
Total unloaded		(lbs)	4325	4405	4680
		(kg)	1966	2000	2125
Motor	Traction motor	Type	DC series wound		
		Output constant rating	(kW)	7.5 [5.0]	
	Hoist pump motor	Type	DC compound wound		
		Output 15 minute rating	(kW)	8.0 [4.5]	
Power steering motor	Type	DC compound wound			
	Output constant rating	(kW)	0.45 [0.35]		
Battery	Voltage	(V)	48/36		
	Compartment size (W × H × L)	(in)	35.0 × 26.5 × 23.0		
(mm)		890 × 674 × 585			

[] show when 36V battery is installed.

Optimum Safety & Serviceability.

BOI SERIES
SUPER ELECTRICS

Extra Cost Efficiency With Total Design Safety,
Easy Maintenance And Parts Back-Up.



Datsun gives you standard safety features in abundance. Automatic 36-48V changeover. Full compliance with ANSI B56.1 standards, requisite ITA standards and Underwriters Laboratory Series E standards. A thyristor thermal switch to prevent thermal damage. "Deadman" switch to automatically switch off power to the traction motor when the operator leaves the seat. And a dash-mounted parking brake.

Heavy-duty strength components proven on other models minimize maintenance by increasing overall reliability. These include the sturdy, high-visibility mast, plug-in solid-state circuit boards and control elements. The plunger-type contactors are designed for up to 600,000 operations—equal to years of operation. The simple-to-adjust battery compartment features a level floor,



Simple battery removal.

and the slotted safety guard further simplifies battery changes. Motors, controller and other key components are positioned for easy access. A large number of common parts are shared with other Datsun series.

A nationwide network of computer-serviced dealer/service/parts centers—staffed by fully trained technicians and master mechanics—stands ready to serve you day or night.

PLUS... a national distribution, service and parts headquarters in Memphis offering such special services as a free customer service training school, as well as complete parts inventories, to back up every machine we sell.



Simplified controller.

EVS analyzer.



Hand lever parking brake.



Easy-access controller and motors.

BOI SERIES
SUPER ELECTRICS



Faster travel speeds.

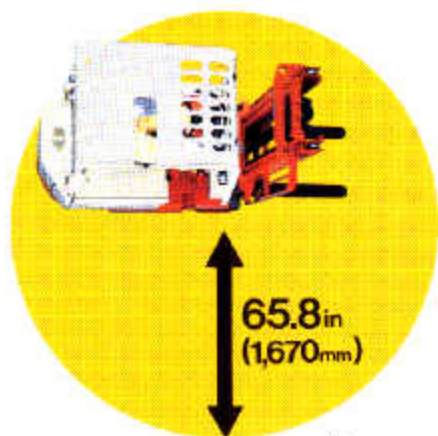


Large battery compartment.



Large open step.

15.9in(405mm)



Small minimum turning radius.

65.8in
(1,670mm)



Superb gradeability.



Datsun Super Series
Electrics are designed
for superb load stability.

High Loading Efficiency & Maneuverability.

Maximum Time Between Charges, Power, Speed And Handling Ease Increase Work Output.

Three lift capacities assure a versatile choice for operating everywhere—from inside shipping containers and low-ceiling work areas to extremely narrow warehouse aisles. The reasons why are many. Compact, low-profile dimensions. A small minimum turning radius. Effortless power steering.

Every element of the operator's Compartment Control Center is human engineered. Datsun's famous single tilt/lift control lever is faster, surer, more precise than conventional 2-lever systems. All gauges and switches are in direct line-of-sight. And getting in and out is easier and safer with the large, open step.

Our superb multiple motor system—built to Datsun specifications by Hitachi, a world leader in electronics—provides maximum energy efficiency per charge. Sepa-

rate motors for traction, hydraulic and power steering systems operate only as needed for maximum energy savings. The rugged traction motor has a field-weakening system which increases travel speed without additional power output. It has a 7.5kW/48V output and provides 30.74 foot pounds of torque. DC compound wound hydraulic and power steering motors prevent over-running during no-load conditions, further reducing power draw.

Datsun's advanced SCR provides an infinitely variable range of speeds without jerks, sudden jolts or stops. This system, praised by operators nationwide, increases productivity, safety and reduces damage to goods.

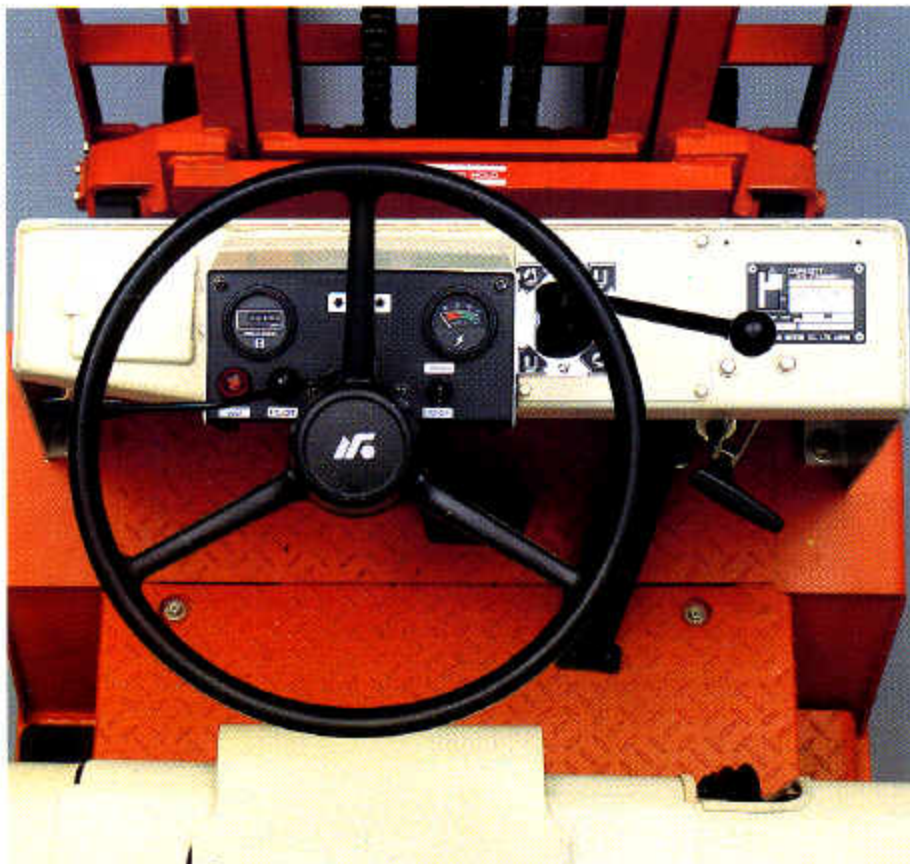
Low hydraulic flow resistance and the ideal mating of gear ratios, motors, torque and tires extend the hours per charge. A new Power/

Economy Switch further extends operating hours per charge by letting the operator reduce power consumption to match job requirements.

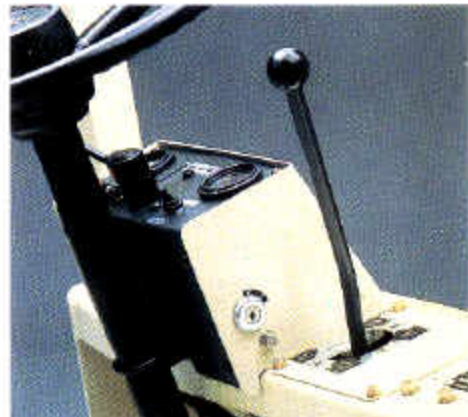
The Datsun adjustable battery compartment adapts to all American 36V and 48V standard battery systems. The compartment is simple to adjust. It opens easily. Combined with a level floor and slotted safety guard, it makes battery changing fast and simple.

A low center of gravity means higher stability with a load and enables all models to lift rated loads to the limit of the standard 4-meter mast.

These are just a few reasons why the Datsun Super Series Electrics measure up as some of the finest in their class!



At-a-glance instruments.



Single tilt/lift control lever.



Effortless power steering.
E3000 (standard), E2700/E2000 (option).

Open your eyes wide. Take a good, close look and you will see what we mean. Datsun, the fastest growing forklift line in North America, brings the electric forklift to age with advanced engineering and sophisticated design that show the way to the future. Here's a forklift totally designed for exceptional energy efficiency, increased operator and machine productivity and long trouble-free operation.

These rugged, quiet workhorses possess superb tight-space and low-ceiling maneuverability. Power steering, famous Datsun single-lever tilt/lift ease and excellent forward visibility minimize fatigue.

An advanced hydraulic system, Power/Economy

Switch which enables the operator to vary power output to suit the job, and an enlarged battery compartment to accommodate higher ratings all help to maximize the time between charges. Either long-operation 36V or high-output 48V batteries can be fitted. Travel/lifting speeds rank very high in the class. A low center of gravity assures exceptional stability with a load.

You will also like the way heavy-duty strength components and an advanced electrical system keep maintenance to a minimum, while the ideal vehicle layout simplifies servicing and checks.

Datsun Super Series Electrics—the future in forklifts today!



Mast Dimension Table

MODEL	E2000	E2700	E3000	
MAST	MAST NAME	MAX. FORK HEIGHT (in/mm)	OVERALL HEIGHT FULLY LOWERED (in/mm)	FREE LIFT WITHOUT BACKREST (in/mm)
SIMPLEX	2S208	82/2080	58.9/1495*	16.9/430
	2S250	98/2500	67.1/1705*	16.9/430
	2S270	106/2700	71.1/1805*	16.9/430
	2S300	118/3000	77.0/1955*	16.9/430
	2S330	130/3300	82.9/2105	16.9/430
	2S350	138/3500	86.2/2240	16.9/430
	2S370	148/3700	89.1/2365	16.9/430
	2S400	159/4000	100.6/2655	16.3/415
DUPLEX	2F225	88/2225	62.2/1580*	40.7/1035
	2F250	97/2475	67.1/1705*	45.7/1160
	2F270	105/2675	71.1/1805*	49.8/1260
	2F300	117/2975	77.0/1955*	55.5/1410
	2F330	129/3275	82.9/2105	61.4/1560
	3F385	152/3850	71.1/1805*	50.0/1270
	3F430	169/4300	77.0/1955*	55.9/1420
	3F475	187/4750	82.9/2105	61.9/1570
TRIPLEX	3F515	203/5150	88.2/2240	67.1/1705
	3F550	217/5500	93.1/2365	72.1/1830
	3F600	237/6000	100.6/2555	79.5/2020

*Lowered height lower than top of overhead guard.

SPECIFICATIONS

CONTROL SYSTEM

Traction motor control	Thyristor tripper circuit with magnetic phase shifter.
Circuit	Inhibitor circuit for safety start. Economy switch circuit for extending operating hours. Low-voltage lock circuit for preventing excessive discharge of the battery. Deadman seat switch circuit. Traction motor cut switch circuit for cutting off the traction power during foot brake working.

MOTORS

Traction	Self-ventilated type, DC-series wound.
Hoist pump	Self-ventilated type, DC-compound wound.
Power steering	DC-compound wound.

STEERING

Type	Manual steering on E2000 and E2700 models. Semi-integral power steering on E3000 model.
Gear	Recirculating ball type.

POWER TRAIN

Reduction gear	Constant-mesh type, involute, helical gear.
Final drive	Hypoid gear.
Drive axle	Full-floating type.

STEERING AXLE

Type	Ellipt type, welded box structure.
Suspension system	Center pin type, rubber mount.

BRAKES

Service brake	Hydraulic, duo-servo drum brake with auto-adjuster. Operates on drive wheels.
Parking brake	Stick type, mechanically operated on traction motor shaft.

WHEELS & TIRES

Tire size	Front tire, 18 x 8 x 12 1/2. Rear tire, 14 x 4 1/2 x B.
-----------	---

FRAME & BODY

Frame structure	Integral, all-welded frame.
Overhead guard	Strength conforms to ANSI standards.

HYDRAULIC UNIT

Hoist pump	Gear type driven by an independent pump motor.
Control valve	Sectional type with lift lock valve.
Lift cylinder	With flow regulator valve for mast lowering speed control.

LOADING UNIT

Mast	All roller mast. Grease sealed roller bearing. Simplex mast: Max. fork height 82-188 in (2080-5000 mm). Duplex mast: Max. fork height 88-129 in (2225-3275 mm). Triplex mast: Max. fork height 152-237 in (3850-6000 mm).
Fork	Forged alloy steel. Hook type. Conforms to ITA standards.

INSTRUMENTS

Motor	Battery voltage meter/ hour meter.
Light	Pilot light/Low-voltage lock light.
Switch	Key switch/Power-Economy switch.

ELECTRICAL EQUIPMENT

Battery connector	SB350, Anderson Co., Product No. 632051.
Others	Horn.

OPTIONAL EQUIPMENT

Battery	35V, Min. 360 AH/6 HR, Max. 680 AH/6 HR. 48V, Min. 325 AH/6 HR, Max. 510 AH/6 HR.
Others	Headlight/Cold storage model (-35°C), etc.

*Note: Mast lowered speed is change with electric.

Ask your dealer for a no-obligation Datsun Demo.

Datsun Forklifts
Nissan Industrial Equipment Company, P.O. Box 161404,
2900 Datsun Drive, Memphis, TN 38116. 901/396-5170

TED B. MILLER CO., INC.
GERING, NEB.



NISSAN MOTOR CO., LTD.

R15E 81 3.10000 Printed in Japan