



NISSAN P-9000

Pneumatic tire lift truck
 Powered by Nissan 2.4L overhead
 injection engine for power, economy, low
 maintenance and easy service

- Outstanding fuel and operating economy
- Single lever tilt/lift control simplifies operation
- A selection of masts to fit any application including the all-new Wide-View Mast
- Full time power steering with protective boot for steer cylinder
- Power assisted, self adjusting service brakes insure easy braking and minimum service
- Total cowl-to-counterweight accessibility reduces service cost and down time
- A three spool valve is standard, enabling easy addition of attachments

Capacity	9000 lbs. @24"	4500 kg. @ 500 mm
Service Weight	12,853 lbs.	5842 kg.
Length (less forks)	126 in.	3200 mm
Height (overhead guard)	88 in.	2235 mm
Width	71 in.	1803 mm
Turning Radius	113 in.	2870 mm
Right Angle Stacking*	135 in.	3429 mm
Travel Speed (empty)	11 mph	18 km/h
(loaded)	11 mph	18 km/h
Lifting Speed (empty)	82.5 fpm	420 mm/s
(loaded)	80.7 fpm	410 mm/s
Tires (drive)	7.50 x 15 Duals	
(steer)	7.00 x 12	

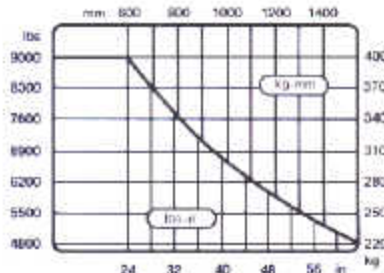
* Add load length



Nissan Industrial Equipment Company
 2900 Datsun Drive • P.O. Box 161404 • Memphis, TN 38116 • (901) 396-5170

P-9000

Capacity Chart to 157 Inches Max. Fork Height



Capacities shown are computed with masts in vertical position and apply to trucks with wide-view masts with maximum fork height up to 157". For capacities above 157" on wide-view masts and all triplex masts please contact factory.

NISSAN ENGINE

	Gasoline/LP Gas	Diesel
Model	P40	SD331
Cylinders	6	6
Bore X Stroke (mm)	3.27 x 4.5, 96 x 114	3.27 x 3.94, 83 x 100
Valve	Overhead	Overhead
Displacement (cc / in ³)	241/14.56	198/12.06
Max. Output (SAE HP @ rpm / kW @ rpm)	58 @ 2300/90 @ 2300	75 @ 2300/51 @ 2300
Max. Torque (lb-ft @ rpm / Kg-m @ rpm)	203 @ 1400/28 @ 1400	174 @ 1600/24.5 @ 1600

LIQUID CAPACITIES

	U.S. Measure	Liters
Hydraulic Oil Tank	14.25 gal	54 l
Differential Oil	7.26 qts	6.8 L
Engine Oil	5.26 qts	5.0 L
Fuel Tank	16.4 gal	62 l
Cooling System	19 qts	18 L
Transmission Oil	15.4 qts	14.6 L

STANDARD MAST SIZES**

Mast Type	MFH		OHL		FL	
Wide View	106 in	2692 mm	78 in	2007 mm	5.2 in	133 mm
	118 in	2997 mm	85 in	2159 mm	5.2 in	133 mm
	130 in	3302 mm	91 in	2311 mm	5.2 in	133 mm
	146 in	3708 mm	101 in	2565 mm	5.2 in	133 mm
	157 in	3968 mm	108 in	2743 mm	5.2 in	133 mm
	177 in	4496 mm	118 in	2997 mm	5.2 in	133 mm
Triplex	152 in	3861 mm	78 in	2007 mm	46.5 in	1182 mm
	169 in	4293 mm	85 in	2159 mm	52.4 in	1337 mm
	187 in	4750 mm	91 in	2311 mm	58.5 in	1487 mm
	217 in	5512 mm	101 in	2565 mm	68.1 in	1730 mm
	237 in	6020 mm	108 in	2743 mm	76 in	1930 mm

** Other lift heights available



Nissan Forklifts meet or exceed all ANSI B56.1 Safety Standards for Powered Industrial Trucks and Underwriters' Laboratories requirements as to fire hazard for gasoline, LP gas, and diesel.

Optional accessories include protecto-seal fuel cap, tail and stop lights, flashing lights, and audible alarms.

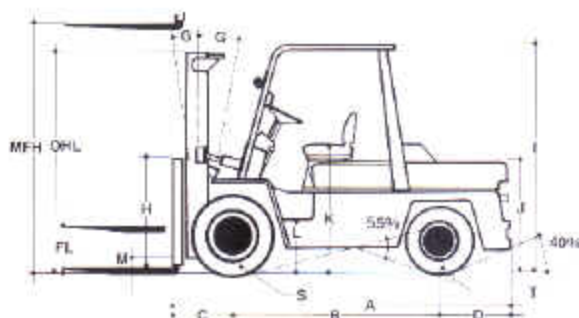
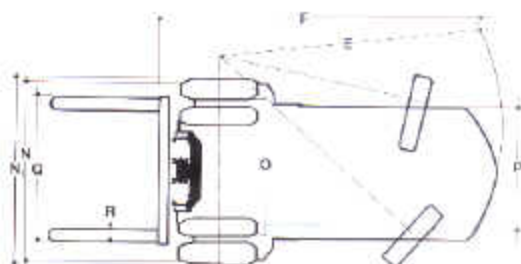
PERFORMANCE SPECIFICATIONS

Lift speed (empty)	82.5 fpm	420 mm/s
Lift speed (rated load)	80.5 fpm	410 mm/s
Lowering speed (empty)	71 fpm	360 mm/s
Lowering speed (rated load)	78.5 fpm	400 mm/s
Travel speed (empty)	Std. 11 mph	18 km/h
Travel speed (rated load)	Std. 11 mph	18 km/h
Gradeability (empty)	Gas 26%	
	Diesel 26%	
	Gas 31%	
Gradeability (rated load)	Gas 27%	
	Diesel 27%	
	Gas 31%	
Drawbar pull (empty)	Gas	4250 lbs / 1930 kg
	Diesel	4290 lbs / 1940 kg
Drawbar pull (rated load)	Gas	7610 lbs / 3450 kg
	Diesel	8610 lbs / 3900 kg

DIMENSIONAL SPECIFICATIONS

A. Length (est. forks)	126 in	3200 mm
B. Wheel base	78.5 in	1994 mm
C. Front overhang*	22.8 in	579 mm
D. Rear overhang	25 in	635 mm
E. Minimum outside turning radius	113 in	2870 mm
F. Right angle stacking (add load length)*	135 in	3430 mm
G. Tilt (FPI), degrees	6°/10°	6°/10°
H. Height, load backrest (std)	48 in	1220 mm
I. Height, over load guard	68 in	2032 mm
J. Height, counterweight	43 in	1092 mm
K. Height, axle	46 in	1170 mm
L. Height, step	19.5 in	495 mm
M. Mast upper clearance	5 in	127 mm
N. Overall width	68.8 in	1748 mm
N ₁ . Overall width (dash)	71 in	1803 mm
O. Drive tread	53 in	1346 mm
P. Step board	43.5 in	1105 mm
Q. Carriage width (incl. fork spread)	55.9 in	1417 mm
R. Fork size (std. Class II)	2" x 51"	
E. Drive tire	7.50 x 15-6Duds	
T. Steering	7.00 x 12"	

* For forks upright, add 1" (25 mm).



The performance shown represents normal values which may be obtained under typical operating conditions of machine. Performance with LPG fuel may be expected to be less than the performance values shown. Nissan products and specifications are subject to improvements without notice.

