



# NISSAN E-6000

36/48 volt system with automatic voltage charger and SCR control. Underwriters ES listed.

EE Rating and freeze package are optional.

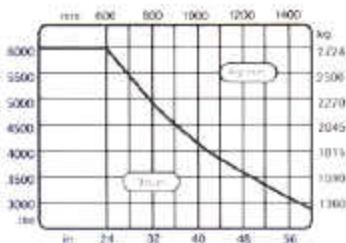
- A combination of quiet electric power with gas engine performance.
- A single lift/tilt control lever simplifies operation.
- A lift-interrupt system prevents overdischarge of the battery, thus extending battery life.
- The steering cylinder rod is protected by a rubber boot to extend service life.
- The power/economy switch permits the conservation of battery energy and facilitates operation in crowded areas.
- A variety of mast types and sizes are available to match your requirements.
- A three-spool valve is standard equipment.
- Service brakes are self-energizing and self-adjusting.
- Precise and reliable SCR travel control.
- Automatically accommodates both 36V and 48V batteries.

Capacity	6000 lbs. @24"	3000 kg. @ 500 mm
Service Weight	7584 lbs.	3447 kg.
Length (less forks)	89.6 in.	2275 mm
Height (overhead guard)	83.1 in.	2110.7 mm
Width	43.6 in.	1107 mm
Turning Radius	75.8 in.	1925 mm
Right Angle Stacking*	90.6 in.	2301 mm
Travel Speed		
Empty (36v)	6.2 mph	9.9 km/h
Loaded (36v)	5.6 mph	8.9 km/h
Empty (48v)	8.4 mph	13.4 km/h
Loaded (48v)	7.4 mph	11.8 km/h
Lifting Speed		
Empty (36v)	63 fpm	320 mm/s
Loaded (36v)	45.3 fpm	230 mm/s
Empty (48v)	78 fpm	396 mm/s
Loaded (48v)	55.1 fpm	280 mm/s
Tires		
(drive)		21 x 8 x 15
(steer)		16 1/4 x 6 x 11 1/4

\*Add load length.



# E-6000



Capacities shown are computed with masts in vertical position and apply to trucks with wide-view masts with maximum fork height up to 157". For capacities above 157" on wide-view masts and all triplex masts please contact factory.

## NISSAN MOTORS

Traction Motor	Model MT4100
Type	DC Series Wound
Insulation	Class H
Rated output Kw/rpm	(1 1/2 Hour) 10/1300 (48v)
Hydraulic Pump Motor	Model MP4100
Type	DC Compound Wound
Insulation	Class F
Rated output Kw/rpm	(15-Minutes) 11/2200 (48v)
Power Steering Pump Motor	Model MP405
Type	DC Compound Wound
Insulation	Class B
Rated output Kw/rpm	(1 Hour) 45/2590 (48v)

## BATTERY SPECIFICATIONS

Compartment Size	Volts	Length	Width	Height
		39.13	31.14	23.03
Electrical Specification	36	27	38.6	1105
Optional	48	19	35.6	765
Weight	Minimum 2535		Maximum 3385	

## STANDARD MAST SIZES\*\*

Mast Type	MFH	OHL	FL
Wide View	104 in 2642 mm	71 in 1803 mm	4.1 in 104 mm
	128 in 3251 mm	83 in 2108 mm	4.1 in 104 mm
	145 in 3683 mm	93 in 2362 mm	4.1 in 104 mm
	157 in 3968 mm	100 in 2540 mm	4.1 in 104 mm
	177 in 4496 mm	110 in 2794 mm	4.1 in 104 mm
Duplex	197 in 5004 mm	120 in 3048 mm	4.1 in 104 mm
	98 in 2489 mm	67 in 1702 mm	4.1 in 1118 mm
	106 in 2692 mm	71 in 1803 mm	4.1 in 1219 mm
	130 in 3302 mm	83 in 2108 mm	4.1 in 1524 mm
	152 in 3861 mm	93 in 2362 mm	4.1 in 1778 mm
Triplex	169 in 4293 mm	77 in 1956 mm	4.1 in 1372 mm
	187 in 4750 mm	83 in 2108 mm	4.1 in 1524 mm
	203 in 5156 mm	88 in 2235 mm	4.1 in 1778 mm
	217 in 5512 mm	93 in 2362 mm	4.1 in 1778 mm
	236 in 5994 mm	101 in 2565 mm	4.1 in 1981 mm

\*\* Other lift heights available.



Nissan Forklifts meet or exceed all ANSI B56.1 Safety Standards for Powered Industrial Trucks and Underwriters' Laboratories type "ES" specifications. Optional accessories include headlights, tail and stop lights, flashing lights and audible alarms.

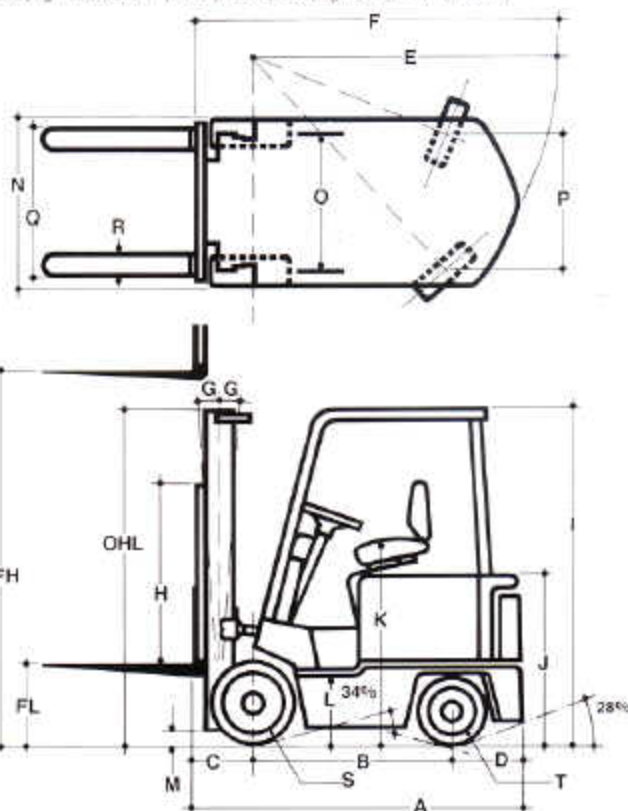
## PERFORMANCE SPECIFICATIONS

	36v		48v	
	rpm	mm/s	rpm	mm/s
Lift speed (empty)	63	320	78	396
Lift speed (rated load)	45.3	230	55.1	280
Lowering speed (empty)	98.4	500	98.4	500
Lowering speed (rated load)	98.4	500	98.4	500
Travel speed (empty) (± 10%)	Std. 6.2 mph	9.9 km/h	Std. 8.4 mph	13.4 km/h
Travel speed (rated load) (± 10%)	Std. 5.6 mph	8.9 km/h	Std. 7.4 mph	11.8 km/h
Gradeability (empty)	18%			
Gradeability (rated load)	10%			

## DIMENSIONAL SPECIFICATIONS

A. Length (less forks)	89.6 in	2275 mm
B. Wheel base	47.2 in	1188 mm
C. Front overhang*	17.7 in	449.6 mm
D. Rear overhang	24.6 in	625 mm
E. Minimum outside turning radius	75.8 in	1925 mm
F. Right angle stacking (load length)*	90.6 in	2301 mm
G. Tilt (F-R) degrees	5°/10°	5°/10°
H. Height, load backrest (std)	49.8 in	1259.8 mm
I. Height, overhead guard	83.1 in	2110.7 mm
J. Height, counter weight	40.9 in	1038.8 mm
K. Height, seat	43.3 in	1099.8 mm
L. Height, step	17.75 in	450.8 mm
M. Mast under clearance	3.1 in	78.7 mm
N. Overall width	43.6 in	1107 mm
O. Drive tread	34.1 in	866.1 mm
P. Steer tread	32.9 in	835.6 mm
Q. Carriage width (max. fork spread)	38.4 in	975 mm
R. Fork size (std) Class III	2 x 5	
S. Drive tire	21 x 8 x 15	
T. Steer tire	16 1/4 x 6 x 11 1/4	

\* For duplex upright subtract 3.1" (79mm). For triplex upright subtract 7" (177.8mm).



The performance shown represents nominal values which may be obtained under typical operating conditions of machine. Nissan products and specifications are subject to improvements without notice.

310 3.700 10000  
 1000 1000  
 1000 1000  
 1000 1000  
 1000 1000

