

310D



Nobody puts more behind their backhoe

From cast iron to curved booms, recent attempts have been made to improve backhoe design. But try as they might, nobody builds a better backhoe than John Deere.

Our proven box-welded triangular boom provides superior strength with minimum weight. Its narrow 10-inch (254-mm) width allows a commanding view of the bucket and trench. Side-swing visibility is also excellent and unobstructed.

Smooth, fast-responding hydraulics and conveniently located low-effort controls help make the most of your operating skills. What's more, the unique side-swing cylinder design automatically cushions the backhoe near the end of its swing limit, for smoother cycles. And longer life.

Rearward-angled 10-foot (3.05-m)-wide stabilizers and no-drift cylinders provide rock-solid stability for craning heavy objects and precise placement of materials.



Two-levers are standard, three-lever-foot-pedal controls can be factory-or field-installed at no extra cost. Once in place, conversion from one arrangement to the other takes less than 30 minutes, making it easy to give an operator the controls he prefers.



New "building block" counterweight design lets you add up to 1,450 pounds (658 kg). Main counterweight is 750 pounds (340 kg), with auxiliary weights available in 450-and 250-pound (204-and 113-kg) sections. Makes maintaining balance easier when adding attachments.



Quick-coupler lets you change attachments easily and without tools. Simply unlock the pin and pull. Takes one person less than one minute. Perhaps best of all, it doesn't require special pins or buckets.

BACKHOE
3100

	With Standard Backhoe*	With Extendable Dipperstick*	
		Retracted	Extended
A Loading height, truck loading position.....	11 ft. 4 in. (3.45 m)	11 ft. 8 in. (3.55 m)	13 ft. 11 in. (4.24 m)
B Reach from center of swing pivot.....	17 ft. 7 in. (5.36 m)	17 ft. 7 in. (5.36 m)	21 ft. 3 in. (6.47 m)
C Reach from center of rear axle.....	21 ft. (6.40 m)	21 ft. (6.40 m)	24 ft. 7 in. (7.50 m)
D Maximum digging depth.....	14 ft. 6 in. (4.42 m)	14 ft. 6 in. (4.42 m)	18 ft. 3 in. (5.56 m)
E Digging depth (SAE):			
(1) 2-ft. (610 mm) flat bottom.....	14 ft. 4 in. (4.37 m)	14 ft. 4 in. (4.37 m)	18 ft. 2 in. (5.53 m)
(2) 8-ft. (2440 mm) flat bottom.....	13 ft. 2 in. (4.02 m)	13 ft. 2 in. (4.02 m)	17 ft. 4 in. (5.28 m)
F Ground clearance, minimum.....	13 in. (330 mm)	13 in. (330 mm)	13 in. (330 mm)
G Bucket rotation.....	160 or 180 degrees	160 or 180 degrees	160 or 180 degrees
H Transport height.....	11 ft. 11 in. (3.63 m)	12 ft. 7 in. (3.84 m)	12 ft. 7 in. (3.84 m)
I Overall length, transport.....	22 ft. 7 in. (6.88 m)	22 ft. 7 in. (6.88 m)	22 ft. 7 in. (6.88 m)
J Stabilizer width – transport with ROPS.....	7 ft. (2.12 m)	7 ft. (2.12 m)	7 ft. (2.12 m)
K Stabilizer spread – operating.....	10 ft. (3.05 m)	10 ft. (3.05 m)	10 ft. (3.05 m)
L Stabilizer overall width – operating.....	11 ft. 6 in. (3.50 m)	11 ft. 6 in. (3.50 m)	11 ft. 6 in. (3.50 m)
M Width over tires**.....	85 in. (2.15 m)	85 in. (2.15 m)	85 in. (2.15 m)

*Backhoe specifications are with 24 in. x 7.5 cu. ft. (610 mm x 0.21 m³) bucket.

**Width over tires with 16.9-24, 8 PR R4 tires is 81 in. (2.05 m).

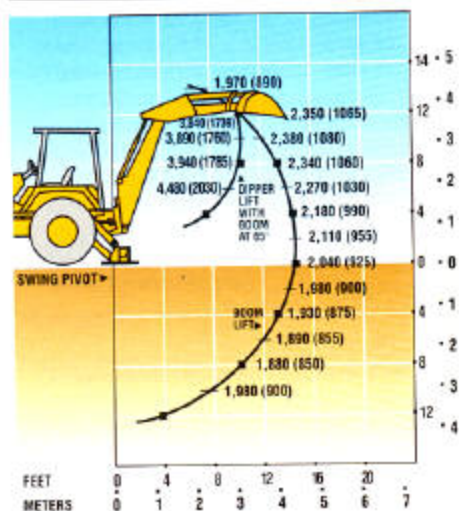
LOADER PERFORMANCE WITH BUCKET OPTIONS

	1.12 cu. yd. (0.86 m ³) Heavy-Duty Long Lip	1.25 cu. yd. (0.96 m ³) General-Purpose Long Lip	1.42 cu. yd. (1.09 m ³) Heavy-Duty Long Lip	1.25 cu. yd. (0.96 m ³) Multipurpose
Operator control.....	single lever	single lever	single lever	single lever
Breakout force.....	9,350 lb. (41.6 kN)	7,420 lb. (33.0 kN)	8,240 lb. (36.7 kN)	7,240 lb. (32.2 kN)
Lifting capacity, full height.....	5,700 lb. (2585 kg)	5,330 lb. (2415 kg)	5,500 lb. (2495 kg)	5,070 lb. (2300 kg)
a Height to bucket hinge pin, maximum.....	10 ft. 11 in. (3.33 m)	10 ft. 11 in. (3.33 m)	10 ft. 11 in. (3.33 m)	10 ft. 11 in. (3.33 m)
b Dump clearance, bucket at 45 degrees.....	9 ft. (2.74 m)	8 ft. 5 in. (2.56 m)	8 ft. 8 in. (2.65 m)	8 ft. 5 in. (2.56 m)
c Bucket dump angle, maximum.....	45 degrees	45 degrees	45 degrees	45 degrees
d Reach at full height, bucket at 45 degrees.....	27 in. (686 mm)	33.6 in. (855 mm)	29.2 in. (743 mm)	29.6 in. (753 mm)
e Rollback angle at ground level.....	40 degrees	40 degrees	40 degrees	40 degrees
f Digging depth below ground, bucket level.....	4.0 in. (100 mm)	3.4 in. (86 mm)	4.0 in. (100 mm)	6.0 in. (150 mm)
Raising time to full height.....	4.0 sec.	4.0 sec.	4.0 sec.	4.0 sec.
Bucket dump time.....	1.1 sec.	1.1 sec.	1.1 sec.	1.1 sec.
Bucket lowering time (power down).....	2.3 sec.	2.3 sec.	2.3 sec.	2.3 sec.

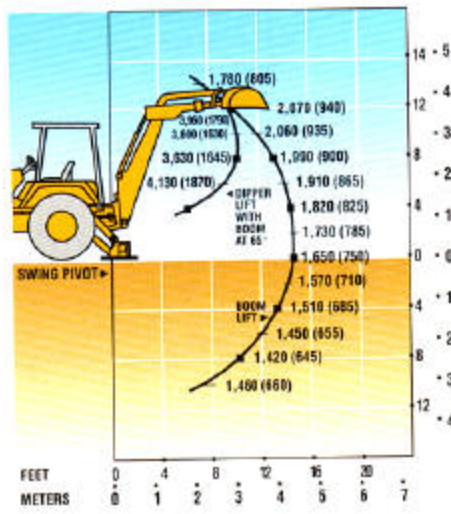
LIFT CAPACITIES* / DIMENSIONS

*Based on SAE J31. Rated lift capacities are in lb. (kg). Maximum lift capacities may be stability and/or hydraulically limited.

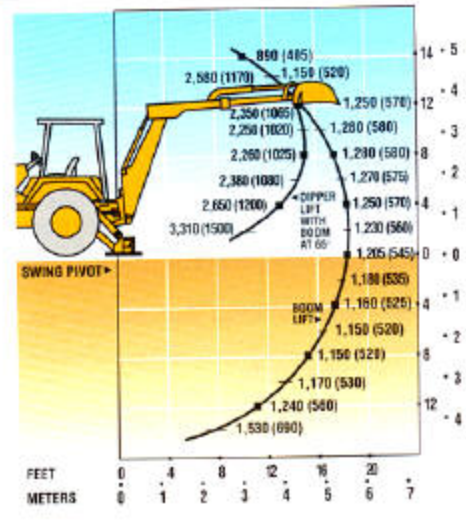
310D BACKHOE WITH STANDARD DIPPERSTICK



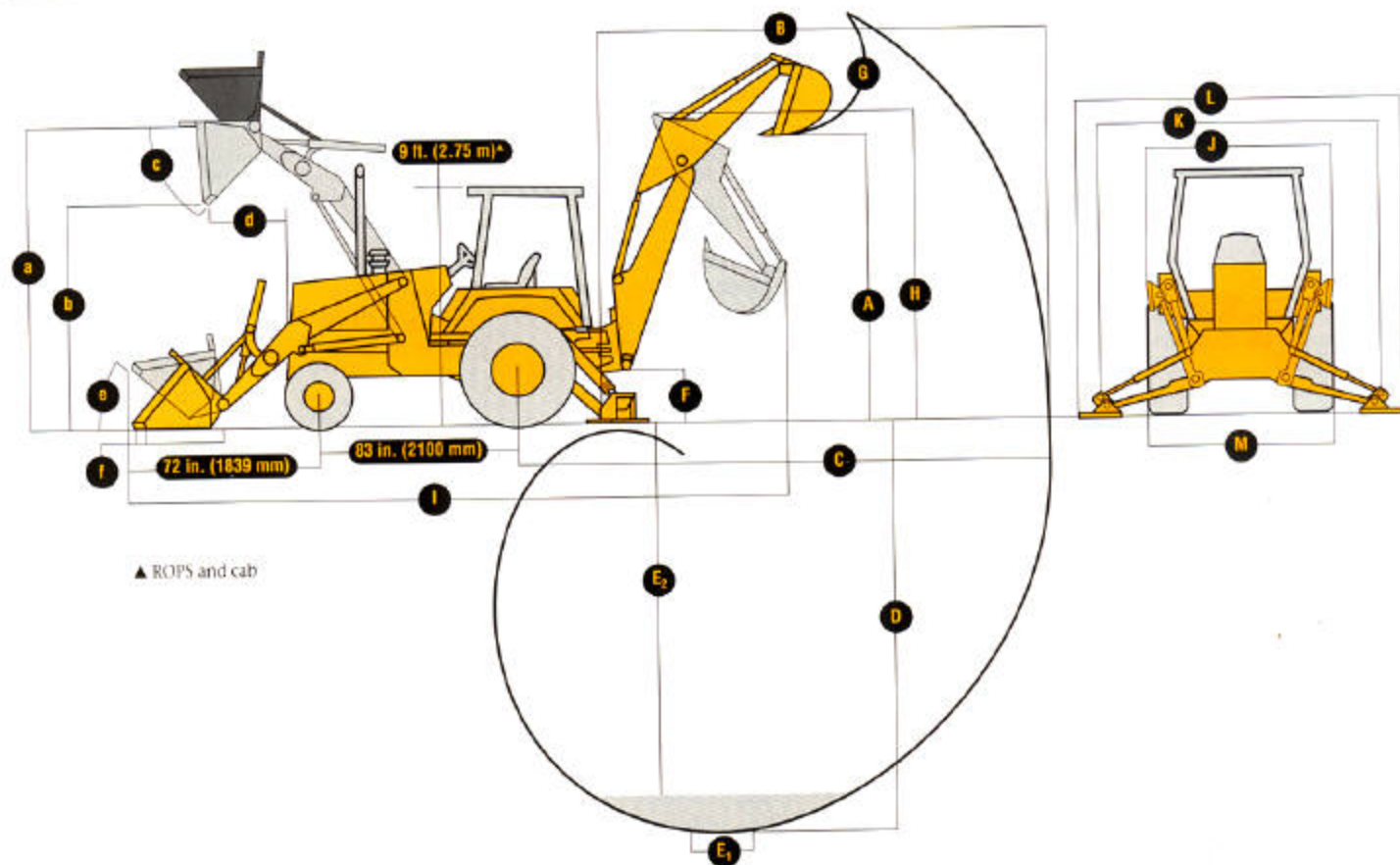
310D BACKHOE WITH 4-FT. (1.22 M) DIPPERSTICK, RETRACTED



310D BACKHOE WITH 4-FT. (1.22 M) DIPPERSTICK, EXTENDED



DIMENSIONS (SEE PAGE 10.)



CYLINDERS**310D**

	<i>Bore</i>	<i>Stroke</i>	<i>Rod</i>
Loader boom (2).....	3.15 in. (80 mm)	29.80 in. (757 mm)	1.77 in. (45 mm)
Loader bucket (1).....	3.54 in. (90 mm)	28.19 in. (718 mm)	1.77 in. (45 mm)
Backhoe boom (1).....	4.53 in. (115 mm)	38.54 in. (979 mm)	2.20 in. (56 mm)
Backhoe crowd (1).....	3.94 in. (100 mm)	32.24 in. (819 mm)	2.20 in. (56 mm)
Backhoe bucket (1).....	3.54 in. (90 mm)	31.00 in. (788 mm)	1.97 in. (50 mm)
Backhoe swing (2).....	3.94 in. (100 mm)	10.94 in. (278 mm)	1.97 in. (50 mm)
Backhoe extendable dipperstick (1).....	2.50 in. (64 mm)	48.00 in. (1220 mm)	1.25 in. (32 mm)
Backhoe stabilizer (2).....	3.94 in. (100 mm)	19.96 in. (507 mm)	1.97 in. (50 mm)
Steering (1) non-powered axle.....	1.97 in. (50 mm)	9.49 in. (241 mm)	0.98 in. (25 mm)
Steering (1) MFWD.....	2.36 in. (60 mm)	7.90 in. (202 mm)	0.98 in. (25 mm)

TIRES

	<i>Rear</i>	<i>Front</i>
With non-powered front axle.....	16.9-24, 8 PR R4 19.5L-24, 8 PR R4	11L-15, 8 PR F3 11L-16, 12 PR F3
With mechanical-front-wheel drive.....	19.5L-24, 8 PR R4 21L-24, 10 PR R4	12-16.5, 8 PR 14-17.5, 10 PR, NHS

SAE OPERATING WEIGHTS

Standard.....	13,600 lb. (6169 kg)
Cab adds.....	500 lb. (227 kg)
Mechanical-front-wheel drive with tires adds.....	190 lb. (86 kg)
Extendable dipperstick excluding required counter-weight adds.....	430 lb. (195 kg)
Optional 400-lb. counterweight adds.....	400 lb. (181 kg)
Optional 750-lb. counterweight adds.....	750 lb. (340 kg)
Backhoe bucket coupler adds.....	200 lb. (91 kg)

See backhoe and loader performance data for bucket weights.

LOADER BUCKETS

	<i>Width</i>	<i>Heaped Capacity</i>	<i>Weight</i>
Heavy-duty long lip*.....	86 in. (2184 mm)	1.12 cu. yd. (0.86 m ³)	918 lb. (417 kg)
	92 in. (2340 mm)	1.42 cu. yd. (1.09 m ³)	965 lb. (438 kg)
General-purpose long lip.....	89 in. (2270 mm)	1.25 cu. yd. (0.96 m ³)	775 lb. (351 kg)
Multipurpose.....	92 in. (2340 mm)	1.25 cu. yd. (0.96 m ³)	1,560 lb. (708 kg)

*With auxiliary cutting edge and skid shoes standard.

NOTE: All other buckets pre-drilled for auxiliary cutting edge.

BACKHOE PERFORMANCE

	<i>With Standard Backhoe*</i>	<i>With Extendable Dipperstick*</i>	
		<i>Retracted</i>	<i>Extended</i>
Digging force, bucket cylinder (power dig position).....	11,570 lb. (51.5 kN)	11,530 lb. (51.3 kN)	11,530 lb. (51.3 kN)
Digging force, crowd cylinder.....	6,650 lb. (29.6 kN)	6,700 lb. (29.8 kN)	4,550 lb. (20.2 kN)
Swing arc.....	180 degrees	180 degrees	180 degrees
Operator control.....	two levers	right foot treadle	right foot treadle
Bucket positions (rollback).....	12 or 21 degrees	8 or 17 degrees	13 or 21 degrees
Stabilizer angle rearward.....	13 degrees	13 degrees	13 degrees
Lifting capacity, maximum.....	5,200 lb. (2358 kg)	5,000 lb. (2267 kg)	3,050 lb. (1383 kg)
Leveling angle.....	14 degrees	14 degrees	14 degrees

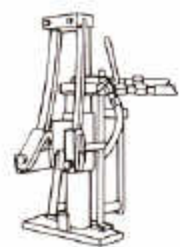
*Backhoe specifications are with 24 in. x 7.5 cu. ft. (610 mm x 0.21 m³) bucket.**BACKHOE BUCKETS**

	<i>Width</i>	<i>Capacity</i>	<i>Weight</i>
Standard duty.....	12 in. (305 mm)	2.5 cu. ft. (0.07 m ³)	244 lb. (111 kg)
	18 in. (457 mm)	5.1 cu. ft. (0.14 m ³)	322 lb. (146 kg)
	24 in. (610 mm)	7.5 cu. ft. (0.21 m ³)	370 lb. (168 kg)
	30 in. (762 mm)	10.0 cu. ft. (0.28 m ³)	410 lb. (186 kg)
	36 in. (914 mm)	10.0 cu. ft. (0.28 m ³)	430 lb. (195 kg)
	36 in. (914 mm)	14.5 cu. ft. (0.41 m ³)	556 lb. (252 kg)
Heavy duty with lift loop.....	12 in. (305 mm)	2.5 cu. ft. (0.07 m ³)	258 lb. (117 kg)
	18 in. (457 mm)	5.1 cu. ft. (0.14 m ³)	334 lb. (151 kg)
	24 in. (610 mm)	7.5 cu. ft. (0.21 m ³)	396 lb. (180 kg)
	24 in. (610 mm)	8.8 cu. ft. (0.25 m ³)	476 lb. (216 kg)
	30 in. (762 mm)	10.0 cu. ft. (0.28 m ³)	444 lb. (201 kg)
	36 in. (914 mm)	10.0 cu. ft. (0.28 m ³)	480 lb. (217 kg)
Extra heavy duty with lift loop.....	18 in. (457 mm)	5.1 cu. ft. (0.14 m ³)	362 lb. (164 kg)
	24 in. (610 mm)	7.5 cu. ft. (0.21 m ³)	424 lb. (192 kg)
	24 in. (610 mm)	8.8 cu. ft. (0.25 m ³)	498 lb. (226 kg)
	30 in. (762 mm)	10.0 cu. ft. (0.28 m ³)	474 lb. (215 kg)
	36 in. (914 mm)	10.0 cu. ft. (0.28 m ³)	370 lb. (168 kg)
Ditch cleaning.....	36 in. (914 mm)	10.0 cu. ft. (0.28 m ³)	370 lb. (168 kg)
	36 in. (914 mm)	14.5 cu. ft. (0.41 m ³)	500 lb. (227 kg)

ENGINE		3100 John Deere 4039D - Naturally Aspirated		
Rated power @ 2,200 rpm	70 SAE net hp (52.2 kW)			
	74 SAE gross hp (55.8 kW)			
John Deere 4039T with optional turbocharger.....	75 SAE net hp (56 kW)			
	79 SAE gross hp (59 kW)			
Cylinders	4			
Displacement.....	239 cu. in. (3.917 L)			
Fuel consumption, typical	1.0 to 2.0 gal./hr. (3.8 to 7.6 L/h)			
Torque rise.....	20 percent			
With optional turbocharger	25 percent			
Maximum net torque.....	192 lb.-ft. (260 Nm)			
With optional turbocharger.....	215 lb.-ft. (292 Nm)			
Lubrication	pressure system with spin-on filter and cooler			
Air cleaner	dual stage dry type with safety element and precleaner			
Electrical system	12 volt with 95-amp alternator			
Sucker-type cooling fan				
TRANSMISSION	four-speed, helical cut gear, collar shift transmission synchronized in all gears with hydraulic reverser			
Torque converter, single stage, dual phase with 2.83:1 stall ratio.....	11 in. (280 mm)			
Travel speeds with 19.5L-24 rear tires	<i>Forward</i>	<i>Reverse</i>		
Gear 1	3.4 mph (5.5 km/h)	3.1 mph (5.0 km/h)		
Gear 2	5.9 mph (9.5 km/h)	5.3 mph (8.5 km/h)		
Gear 3	12.6 mph (20.3 km/h)	11.3 mph (18.2 km/h)		
Gear 4	20.8 mph (33.5 km/h)	18.8 mph (30.3 km/h)		
FINAL DRIVES	heavy-duty, inboard planetary final drives evenly distribute shock loads over three gears			
BRAKES	hydraulic wet disk, mounted inboard, pressure cooled and lubricated, self adjusting and self equalizing			
CAPACITIES				
Fuel tank (with ground level fueling)	34 gal. (129 L)			
Engine coolant	17 qt. (16 L)			
Engine oil including filter	9 qt. (8.5 L)			
Torque converter and reverser system	8 qt. (7 L)			
Hydraulic system.....	21 gal. (79 L)			
Transaxle with MFWD	6 gal. (23 L)			
STEERING	hydrostatic power steering conforms to SAE J1151, emergency steering to SAE J53			
Non-powered axle				
Curb turning radius with brakes	11 ft. 9 in. (3.57 m)			
Without brakes	13 ft. 3 in. (4.04 m)			
Bucket clearance circle with brakes.....	31 ft. 6 in. (9.61 m)			
Without brakes	34 ft. 7 in. (10.55 m)			
Steering wheel turns, stop to stop.....	2.2 to 2.9			
Mechanical-front-wheel drive				
Curb turning radius with brakes	10 ft. 11 in. (3.34 m)			
Without brakes	13 ft. 8 in. (4.17 m)			
Bucket clearance circle with brakes.....	29 ft. 9 in. (9.07 m)			
Without brakes	35 ft. 3 in. (10.74 m)			
Steering wheel turns, stop to stop.....	2.5			
Axle oscillations stop to stop, both axles.....	22 degrees			
Axle ratings	<i>Static</i>	<i>Dynamic</i>	<i>SAE J43</i>	
Front	56,000 lb. (25 300 kg)	56,000 lb. (25 300 kg)	18,800 lb. (8500 kg)	
Rear	43,500 lb. (19 700 kg)	58,000 lb. (26 300 kg)	15,260 lb. (6900 kg)	
HYDRAULIC SYSTEM				
System	open center			
Pressure, main relief	2,700 psi (18 620 kPa)			
Pump	gear type			
Flow @ 2,200 rpm.....	38 gpm (144 L/min.)			
Filter, return oil	10-micron, spin-on enclosed replaceable element			



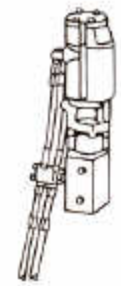
OTHER



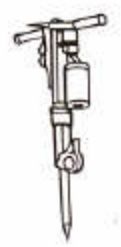
Signpost puller



Posthole digger



Signpost driver



Breaker



Asphalt cutter



Brush cutter



Saw



Cable cutter



Chain saw



Hydraulic alternator



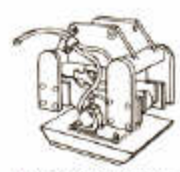
Trash pump



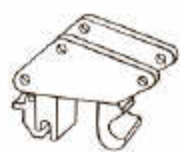
Thumb



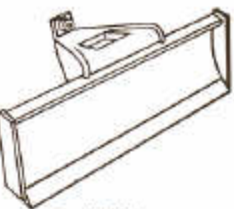
Cemetery bucket



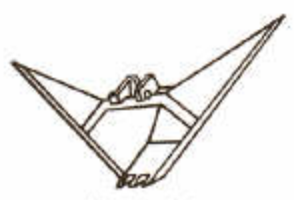
Hydraulic compactor



Backhoe quick-coupler



Backfill blade



V-ditching bucket



Ripper teeth



Hydraulic breaker



Hand-held compactor

Put more work within reach

By design, backhoes are extremely versatile machines. And the flexible 310D can be further equipped to take on even more tasks.

Start with a John Deere quick-coupler. This handy item lets you change attachments in seconds. No tools, no extra help necessary. Just pull the pin and you're in business. Backhoe coupler is available from the factory or, like the loader coupler, can be dealer installed.

Add a solenoid-controlled low-flow auxiliary valve for improved control with hand-held tools and cylinder-actuated attachments.

Dipper-mounted quick-coupler-equipped hydraulic lines deliver convenient high-flow power out back for breakers and compactors.

Want more? Scan these pages for an idea of the kinds of attachments we offer, then get to your John Deere dealership. And get to work.

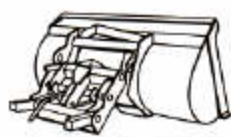


LOADER

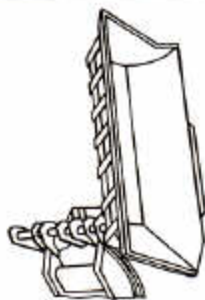
BACKHOE



Angle dozer



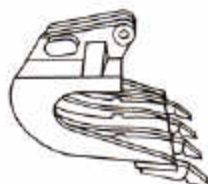
Loader quick coupler



Side-dump bucket



Auger



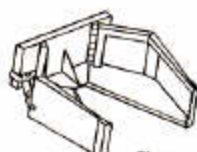
Pavement-removal bucket



Multi-purpose bucket



Broom



Claw



Boom jib



Snowplow



Forks



Jaw bucket

Life's full of uncertainties but your backhoe doesn't have to be one of them

Missed bids, bad weather, ever-changing regulations – you encounter enough pitfalls without your equipment contributing. That's why you owe it to yourself to look into a 310D.

This reliable backhoe is full of features that deliver hours of trouble-free service. For example, hydraulic lines and cylinders are located internally wherever possible for built-in protection. In vulnerable areas, hoses are Cordura-covered to reduce damage from abrasion and exposure.

Make all of your daily service checks in one minute, in one spot, with the loader bucket safely on the ground. Most lube points are convenient, and those that aren't are serviced by a lube bank that brings otherwise difficult-access grease zerks closer.

Reduced downtime is no accident with the 310D. Safety features include an automatically applied parking brake, neutral-start reverser, and seatbelt-reminder light, to name just a few.

Keeping you on the job and productive – that's the idea behind this backhoe design.

The JDAvantEDGE

This no-cost extra includes a huge package of support programs, parts systems, warranty plans, finance options, and dealer resources all dedicated to giving you the best value for your backhoe dollar.



Each electrical circuit has its own fuse in this convenient centrally located fuse block. Helps make troubleshooting and service work fast and easy.



Daily and periodic service items are located behind lockable hinged panels that won't get left off or lost. For added convenience, maintenance intervals are listed on an easy-to-read decal.

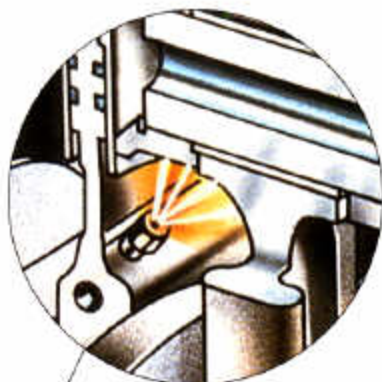


This handy boom lock secures the loader in the raised position, and latches out of the way when not in use. (Not required for daily servicing).

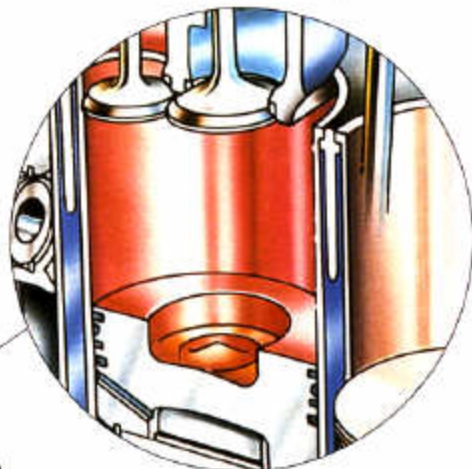


Standard filter/water separator helps keep fuel clean and contaminant-free.

With a 20 percent torque rise, John Deere 3.9 L diesels pack plenty of reserve to deliver extra pull-through power. Makes a 310D easy on fuel, too.



Jet-spray nozzles bathe the bottom sides of pistons with cooled oil, for longer life.



Free-breathing cross-flow cylinder head, specially shaped pistons, and contoured valves increase intake and exhaust flows for maximum power output and top fuel efficiency.

Individually replaceable, centrifugally cast, wet-type cylinder liners dissipate heat for reduced ring wear and oil breakdown. High-ring pistons provide high compression, three low-friction rings deliver good oil control.

Integral engine-balance shafts provide smooth-running, low-vibration performance.

Limited-slip differential automatically transfers 80 percent of machine's power to the wheel with the best traction. The MFWD axles found on other backhoes direct power to the slipping tire - in effect, delivering three-wheel drive, not all-wheel drive like the 310D.

John Deere-designed and-built 4-speed synchronized collar-shift transmission is coupled with a single-stage, dual-phase torque converter and planetary reverser for smooth moves, fast cycles.

Rugged, industrial MFWD axle (optional) features a unique offset differential for superior ground clearance. Axle is totally sealed to keep out dirt and contaminants.



Inside beats the heart of a Deere

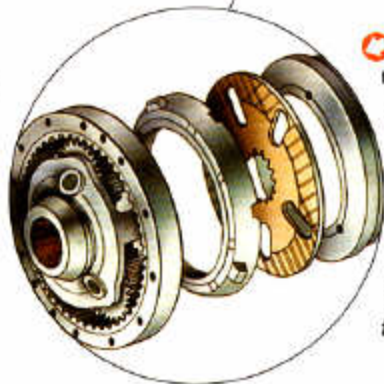
Unlike some, you won't find a hodgepodge of components beneath the sheet metal of a 310D. From its heavy-duty wet-sleeve engine to planetary final drives, this backhoe is loaded with traditional John Deere features that make it a predictable performer. And a smart, long-term investment.

Positioned securely in the one-piece unitized mainframe, components are isolated from shock-load stress, yet can be individually removed to speed repairs and reduce downtime.

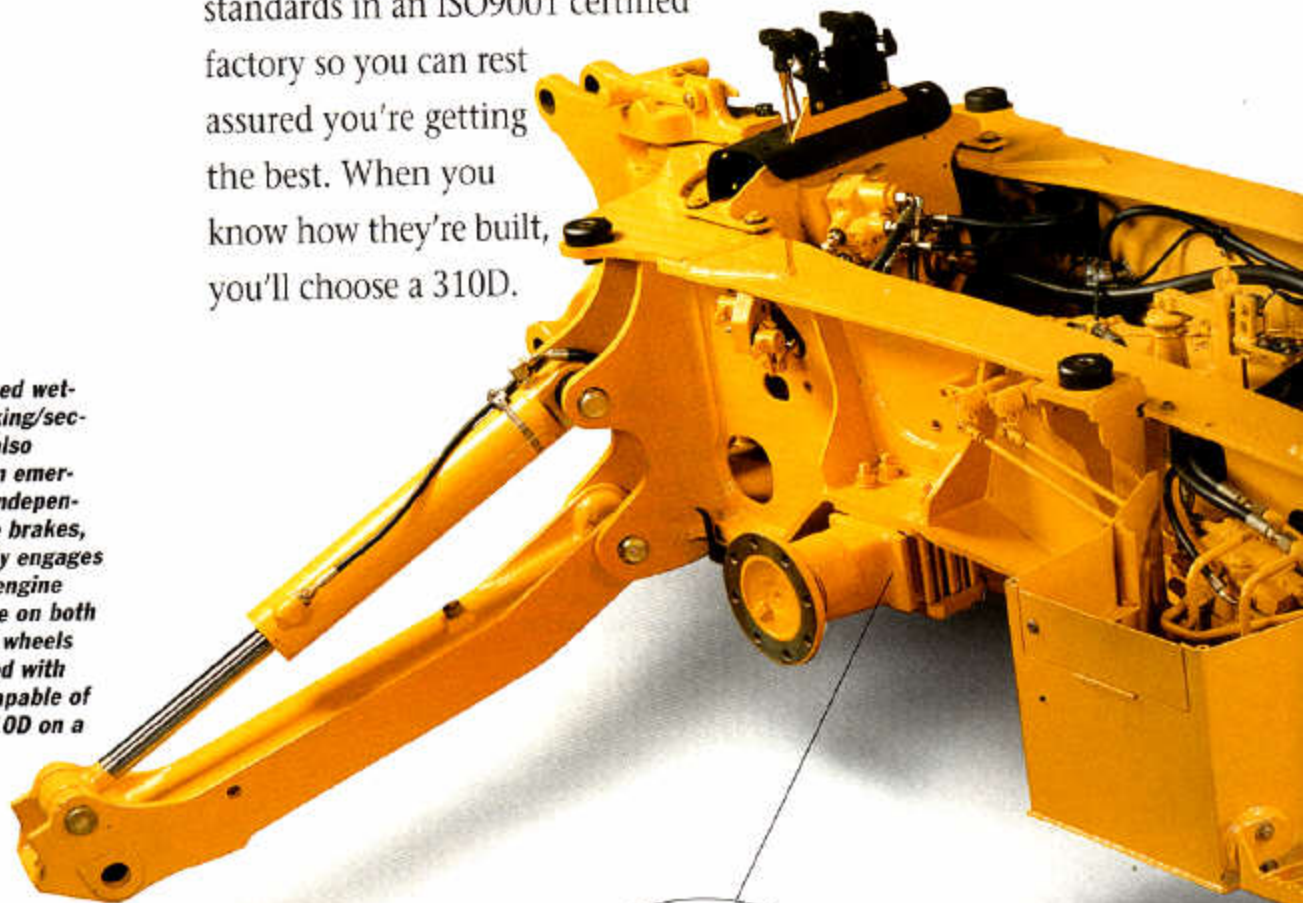
Like all John Deere backhoes, the 310D is manufactured to exacting standards in an ISO9001 certified factory so you can rest assured you're getting the best. When you know how they're built, you'll choose a 310D.

Fully enclosed wet-band-type parking/secondary brake also functions as an emergency brake. Independent of service brakes, it automatically engages whenever the engine stops. Effective on both front and rear wheels (when equipped with MFWD), it's capable of holding the 310D on a 30-degree slope.

Standard differential lock can be engaged on-the-go to improve traction in poor underfoot conditions. Automatically disengages when traction is restored.



Inboard-mounted wet-disk brakes are self-adjusting, self-equalizing, and require no maintenance. Planetary final drives distribute loads over three gears and are sealed in a cooling oil bath for long life and trouble-free performance.





Exclusive bucket linkage enables you to set up the bucket in "power dig" and "truck loading" positions. Linkage also accommodates Case, Ford, and older John Deere buckets.



Available quick coupler-equipped auxiliary hydraulic lines simplify adding rear attachments such as breakers and compactors.



With standard, heavy-duty, and extra-heavy-duty buckets from 12 to 36 inches (305 to 914 mm) wide, it's easy to get the right bucket for your kind of work. Fanggs® bucket teeth (standard) require 23 percent less digging effort, last 19 percent longer.

Optional extendible dipperstick adds digging depth and reach. Full-width, hardened Boron-steel wear strips on all sides of extension reduce wear and cut maintenance costs. Four Boron-steel wear pads on the housing can be repositioned to keep tolerances tight. Extension can also be locked.



An easy-to-reach, easy-to-operate lever activates this backhoe-boom lock, securing the boom in a vertical position for better balance and smooth transport.

Optional reversible pads have an aggressive cleated side for soft terrain and a rubber side for use on hard surfaces. A retaining pin secures the pads in the desired position, preventing them from flipping over. Hydraulic "lock-outs" in cylinders keep stabilizers from settling, up or down.



ENGINE

John Deere Model 4039D - 3.9 liter, 70 SAE net hp
John Deere Model 4039T - 3.9 liter, 75 hp (56 kW)
turbocharged engine

Dual safety element dry-type air cleaner with pre-cleaner and restriction monitor on console

Electric ether starting aid

Enclosed safety fan guard

Engine coolant heater - 1,000 watts

Engine coolant - 34°F (-37°C)

Muffler, underhood, with vertical curved end

exhaust stack and non-spark arresting

Naturally aspirated, isolation mounted

Oil-to-water engine oil cooler

Prewired for ether starting aid

Quick release John Deere fuel filter

Spin-on engine oil filter

Sucker-type cooling fan

POWER TRAIN

Differential lock with padded pedal

Electric clutch cutoff on gearshift and loader lever

Electric 1-N-R control with single lever and neutral safety switch interlock

Engine-mounted powershift reverser with torque converter

Isolation mounted to mainframe

Four forward, four reverse speeds

Hydraulic service brakes

Inboard, wet disc, self adjusting and self equalizing

Conform to SAE J1473, ISO3450

Hydrostatic power steering with emergency manual mode

Mechanical-front-wheel drive

Drive shaft guard / Electric on/off control / Heavy-walled drive shaft / Limited slip differential / Sealed axle

Non-powered front axle

Oil-to-air cooler

Hydraulic system / Reverser/torque converter / Transaxle and brakes

Parking/emergency brake

Inboard wet V-groove / Independent of service brakes

Conforms to SAE J1473, ISO3450

Planetary final drives

Synchronized 1st through 4th gears

BACKHOE

Alternate stabilizer feet

Auxiliary backhoe hydraulics for breaker, compactor

Backhoe bucket coupler for "C" and "D" series John Deere buckets, Case buckets

Backhoe controls

Case pattern with three-lever foot swing / Ford pattern with four levers / SAE excavator two-lever pattern*

Backhoe transport lock lever

Digging depth 14 ft, 6 in.

Dirt foot stabilizer pad

Enclosed single boom cylinder

Extendable slipperstick

Four-foot extension / Full-width wear strips

Extra function backhoe valve with pedal or lever

Heavy-duty and extra heavy-duty backhoe buckets

Built-in lift loop

Independent isolation-mounted stabilizer valve with two-direction anti-drift valves

Less bucket with bucket pins

SAE controlled lowering device*

3100

Stabilizer cylinder guards*

Swing locking pin stored in operator's station

Two lever backhoe controls

LOADER

Alternate buckets

Long-tip configuration / Multipurpose

Auxiliary loader hydraulics

Bolt-on auxiliary cutting edge

Bucket level indicator

Hydraulic self leveling

Less bucket with bucket pins

Loader boom service lock

Return to dig feature

Single lever control with electric clutch cutoff switch on gearshift and loader lever

OPERATOR'S STATION

Built-in beverage and Thermos® bottle holder

Built-in Operator's Manual storage compartment with manual

Cab (includes as standard equipment):

Cab pressurizer - 0.25-in. Hg pressurization / Deluxe

headliner - Deluxe "eyeball" dome light / Door

pre-plumbed for windshield wiper / Door that

opens within vehicle width / Fresh air intake

heater/deheater/pressurizer - 40,000 Btu/hr (11.7

kW) heater, Conforms to SAE J1503, J1535D /

Fresh air pre-cleaner / One rear and two front

wipers / Prewired for ether starting aid / Prewired for radio / Prewired for rotating beacon /

Tinted safety glass

Cab (includes as optional equipment):

Air conditioning - 27,000 Btu/hr (7.9 kW) capacity,

CFC free R134a, Conforms to SAE J1503 / Deluxe

fabric suspension seat / Front quarter cab* - Front

doors only / Radio - AM/FM weather band / Seat

belt, 3 in. (76 mm), retractable / Tilt steering /

Windshield washers.

Coat hook

Electric monitor system with audible and visual

warning

Air cleaner restriction / Engine coolant temperature /

Engine oil pressure / Hydraulic filter indicator /

Low alternator voltage / Park brake on-off

indicator / Seat belt indicator / Torque converter

temperature indicator

Fuel gauge

Hand throttle with fuel economy setting @ 2,100 rpm

Headliner

Horn

Conforms to SAE J994, J1440

Hourmeter

Interior rearview mirror

Conforms to SAE J985

Key start switch with electric fuel shutoff

Left and right front access

Modular design ROPS/ROPS canopy

Isolation mounted with molded roof

Conforms to SAE J1040

Molded floor mat

Non-suspension vinyl seat with flip-up armrests,

fore, aft, and vertical adjustment

Conforms to SAE J899

Padded foot throttle

Seat belt, 2-in. (51 mm), with retractors

Adjusts independent of seat position

Conforms to SAE J386

Slip-resistant steps and ergonomically-located

handholds

Conform to SAE J185

3100

Tachometer/hourmeter

LIGHTS

Two additional halogen front work lights

Two front and two rear turn signal/flasher

Two front driving/working and two rear working halogen

35,200 candlepower each

Two rear reflectors

Conform to SAE J99

Two rear stop and tail

OVERALL VEHICLE

Auxiliary toolbox - internal

Chrome exhaust extension

Dent resistant rear fenders

Engine side shields with "tip up" access

Exterior toolbox located in right step and lockable with start switch key

Fire extinguisher

Front counterweights

400 lb. (181 kg) / 750 lb. (340 kg) / 1,000 lb. (453 kg)

Front fenders*

Front grille guard*

Front grille screen*

Fuel tank, 34-gal. (129 L)

Built-in water strainer / Ground level fueling /

Sump with drain / Wide-mouth filler cap with padlock

High ambient temperature engine cooling kit*

High-flotation tires

Laser machine control system

One-piece unitized construction mainframe

(One rear and two front built-in tie downs)

Outside rearview mirrors

Rear fender extensions

Rear wheel spacers for use with chains

Rental decal kit

Remote grease bank for front axle

Reverse warning alarm

Switchable to 97 db(A) or 111 db(A)

Conforms to SAE J994, J1440

Rigid mounted front bumper

Rotating beacon

SMV emblem

Special color paint*

11L-15, 8 PR R3 front tires

16.9-24, 8 PR R4 rear tires

81 in. (2.06 m) overall width

Vandal protection locking with start switch key for engine access doors, instrument panel

ELECTRICAL

Blade-type multi-fused circuits

By-pass start safety cover on starter

Dual batteries - 360 reserve 1,250 CCA

95-amp alternator

Positive terminal battery covers

Prewired for rotating beacon

Prewired for two additional front halogen worklights

Single battery with 160-min. reserve capacity and

625 CCA

12-volt system

HYDRAULIC SYSTEM

Circuit relief valve protection

Independent hydraulic reservoir

"O" ring face seal connectors

10-micron spin-on replaceable element

38-gpm engine-mounted gear pump - open center

KEY: ● Standard equipment ■ Optional or special equipment

*See your John Deere dealer for further information.



Net engine power is with standard equipment including air cleaner, exhaust system, alternator, and cooling fan, in standard conditions per SAE J1349 and J1994, using ho. 2-0 fuel at 35 APL gravity. No desludging is required up to 5,000 feet (1,500 m) altitude. With optional altitude compensating turbocharger 10,000 feet (3,000 m). Gross power is without cooling fan.

Specifications and design subject to change without notice. Whenever applicable, specifications are in accordance with SAE standards. Except where otherwise noted, these specifications are based on a and with 19.5L-24, 8 PR R4 rear tires, 11L-15, 12 PR F3 front tires, 1.32 cu. yd. (0.86 m³) loader bucket with auxiliary cutting edge and skid plates, 24 in. x 7.5 cu. ft. (610 mm x 0.21 m³) backhoe bucket.

