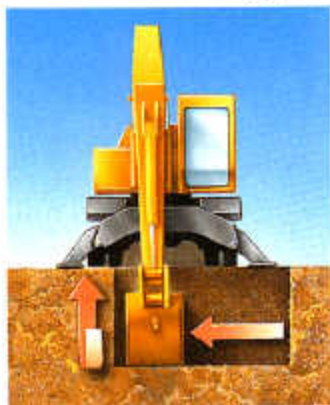


595D



**MILLER**  
SINCE 1924  
Ted B. Miller Co. Inc.  
220810 Hwy. 92 East  
P.O. Box 400  
Gering, Nebr. 69341  
Phone #303-436-2177  
Fax #303-439-7845



The sophisticated hydraulic system is the brains behind combined-hydraulic-function-capability (C-H-F-C) – its automatic load-sensing system. C-H-F-C lets the 595D propel and swing the boom simultaneously without stuttering or mistracking.



The open-center hydraulic system automatically adjusts to meet job demands. Mode selector also lets you fine-tune performance to save fuel.



Easy to get to. Large, reinforced doors swing wide for easy access to all components and fill-points. Easy-to-read sight gauges let you check hydraulic fluid and fuel levels from the ground. Lock cab and service areas with ignition key.

Choose from two all-welded, stress relieved undercarriages. One has independent front and rear stabilizers – the other comes with front stabilizers and a rear blade.

The right rubber for every job. Choose dual 10.00x20.0 tires for working on hard surfaces. Single 18.00x19.5 tires give better floatation, traction, and mobility in rough terrain.



The 595D roads like no other excavator. The two-speed hydrostatic system provides all-wheel drive in low and a top speed of 18.6 mph (30 km/h) in high. The air-over-hydraulic brake system features expanding shoes at all corners to assure smooth confident stops in all kinds of terrain.



**BUCKET SELECTION CHART**

	Recommended Bucket Size*			
	Digging Without Stabilizers		Digging With Stabilizers	
	General-Purpose Bucket	Heavy-Duty Bucket	General-Purpose Bucket	Heavy-Duty Bucket
<b>Material (loose weight)</b>				
Wood chips - 700 lb./cu. yd. (420 kg/m <sup>3</sup> )	3.50 cu. yd. (2.7 m <sup>3</sup> )	—	5.00 cu. yd. (3.8 m <sup>3</sup> )	—
Peat, dry - 750 lb./cu. yd. (440 kg/m <sup>3</sup> )	3.00 cu. yd. (2.3 m <sup>3</sup> )	—	4.50 cu. yd. (3.4 m <sup>3</sup> )	—
Cinders - 950 lb./cu. yd. (560 kg/m <sup>3</sup> )	2.25 cu. yd. (1.7 m <sup>3</sup> )	—	2.75 cu. yd. (2.1 m <sup>3</sup> )	—
Peat, wet - 1,170 lb./cu. yd. (690 kg/m <sup>3</sup> )	2.00 cu. yd. (1.5 m <sup>3</sup> )	—	3.25 cu. yd. (2.5 m <sup>3</sup> )	—
Topsoil - 1,600 lb./cu. yd. (950 kg/m <sup>3</sup> )	1.50 cu. yd. (1.1 m <sup>3</sup> )	—	2.00 cu. yd. (1.5 m <sup>3</sup> )	—
Coal - 1,780 lb./cu. yd. (1050 kg/m <sup>3</sup> )	1.38 cu. yd. (1.1 m <sup>3</sup> )	—	1.75 cu. yd. (1.3 m <sup>3</sup> )	—
Caliche - 2,100 lb./cu. yd. (1250 kg/m <sup>3</sup> )	0.75 to 1.00 cu. yd. (0.6 to 0.8 m <sup>3</sup> )	0.63 to 0.88 cu. yd. (0.5 to 0.7 m <sup>3</sup> )	1.00 to 1.25 cu. yd. (0.8 to 1.0 m <sup>3</sup> )	0.88 to 1.12 cu. yd. (0.7 to 0.9 m <sup>3</sup> )
Earth, loam - 2,100 lb./cu. yd. (1250 kg/m <sup>3</sup> )	1.00 cu. yd. (0.8 m <sup>3</sup> )	0.88 cu. yd. (0.7 m <sup>3</sup> )	1.25 cu. yd. (1.0 m <sup>3</sup> )	1.12 cu. yd. (0.9 m <sup>3</sup> )
Shale - 2,250 lb./cu. yd. (1330 kg/m <sup>3</sup> )	1.00 cu. yd. (0.8 m <sup>3</sup> )	0.88 cu. yd. (0.7 m <sup>3</sup> )	1.25 cu. yd. (1.0 m <sup>3</sup> )	1.12 cu. yd. (0.9 m <sup>3</sup> )
Sand, dry - 2,400 lb./cu. yd. (1420 kg/m <sup>3</sup> )	1.00 cu. yd. (0.8 m <sup>3</sup> )	0.88 cu. yd. (0.7 m <sup>3</sup> )	1.25 cu. yd. (1.0 m <sup>3</sup> )	1.12 cu. yd. (0.9 m <sup>3</sup> )
Clay, dry - 2,500 lb./cu. yd. (1480 kg/m <sup>3</sup> )	0.75 to 1.00 cu. yd. (0.6 to 0.8 m <sup>3</sup> )	0.88 cu. yd. (0.7 m <sup>3</sup> )	1.00 to 1.25 cu. yd. (0.8 to 1.0 m <sup>3</sup> )	1.00 cu. yd. (0.8 m <sup>3</sup> )
Earth, dry - 2,550 lb./cu. yd. (1510 kg/m <sup>3</sup> )	0.75 to 0.88 cu. yd. (0.6 to 0.7 m <sup>3</sup> )	0.75 cu. yd. (0.6 m <sup>3</sup> )	1.00 to 1.12 cu. yd. (0.8 to 0.9 m <sup>3</sup> )	1.00 cu. yd. (0.8 m <sup>3</sup> )
Limestone, broken or crushed - 2,600 lb./cu. yd. (1540 kg/m <sup>3</sup> )	0.63 to 0.88 cu. yd. (0.5 to 0.7 m <sup>3</sup> )	0.50 to 0.75 cu. yd. (0.4 to 0.6 m <sup>3</sup> )	0.88 to 1.12 cu. yd. (0.7 to 0.9 m <sup>3</sup> )	0.63 to 0.88 cu. yd. (0.5 to 0.7 m <sup>3</sup> )
Earth, wet - 2,700 lb./cu. yd. (1600 kg/m <sup>3</sup> )	0.88 cu. yd. (0.7 m <sup>3</sup> )	0.75 cu. yd. (0.6 m <sup>3</sup> )	1.25 cu. yd. (1.0 m <sup>3</sup> )	0.88 cu. yd. (0.7 m <sup>3</sup> )
Clay, wet - 2,800 lb./cu. yd. (1660 kg/m <sup>3</sup> )	0.88 cu. yd. (0.7 m <sup>3</sup> )	0.75 cu. yd. (0.6 m <sup>3</sup> )	1.12 cu. yd. (0.9 m <sup>3</sup> )	0.88 cu. yd. (0.7 m <sup>3</sup> )
Rock, granite, blasted and broken - 2,800 lb./cu. yd. (1660 kg/m <sup>3</sup> )	0.75 to 1.00 cu. yd. (0.6 to 0.8 m <sup>3</sup> )	0.63 to 0.88 cu. yd. (0.5 to 0.7 m <sup>3</sup> )	1.00 to 1.25 cu. yd. (0.8 to 1.0 m <sup>3</sup> )	0.75 to 1.00 cu. yd. (0.6 to 0.8 m <sup>3</sup> )
Sand, moist - 2,850 lb./cu. yd. (1690 kg/m <sup>3</sup> )	0.88 cu. yd. (0.7 m <sup>3</sup> )	0.75 cu. yd. (0.6 m <sup>3</sup> )	1.25 cu. yd. (1.0 m <sup>3</sup> )	1.00 cu. yd. (0.8 m <sup>3</sup> )
Sand and gravel, dry - 2,900 lb./cu. yd. (1720 kg/m <sup>3</sup> )	0.88 cu. yd. (0.7 m <sup>3</sup> )	0.75 cu. yd. (0.6 m <sup>3</sup> )	1.25 cu. yd. (1.0 m <sup>3</sup> )	1.00 cu. yd. (0.8 m <sup>3</sup> )
Sand, wet - 3,100 lb./cu. yd. (1840 kg/m <sup>3</sup> )	0.75 cu. yd. (0.6 m <sup>3</sup> )	0.63 cu. yd. (0.5 m <sup>3</sup> )	1.00 cu. yd. (0.8 m <sup>3</sup> )	0.88 cu. yd. (0.7 m <sup>3</sup> )
Sand and gravel, wet - 3,400 lb./cu. yd. (2020 kg/m <sup>3</sup> )	0.75 cu. yd. (0.6 m <sup>3</sup> )	0.63 cu. yd. (0.5 m <sup>3</sup> )	1.00 cu. yd. (0.8 m <sup>3</sup> )	0.88 cu. yd. (0.7 m <sup>3</sup> )

\*Contact your John Deere dealer for optimum bucket and attachment selections. These recommendations are for general conditions and average use. Larger buckets may be possible when using light buckets, for flat and level operations, less compacted materials, and volume loading applications such as mass excavation applications in ideal conditions. Smaller buckets are recommended for adverse conditions such as off-level applications and uneven surfaces. Bucket capacity indicated is SAE heaped.

## LIFT CAPACITIES

**Boldface** italic type indicates hydraulic-limited capacities; **lightface** type indicates stability-limited capacities, in lb. (kg). Ratings at bucket lift hook, machine equipped with 10 ft. 2 in. (3.1 m) arm; 0.75-cu. yd. (0.6 m<sup>3</sup>) PCSA heaped bucket; and situated on firm, uniform supporting surface. Total load includes weight of cables, hook, etc. Figures do not exceed 87 percent of hydraulic capacities or 75 percent of weight needed to tip machine.

Load Point Height	5 ft. (1.52 m)		10 ft. (3.05 m)		15 ft. (4.57 m)		20 ft. (6.10 m)		25 ft. (7.62 m)			
	Over Rear	Over Side	Over Rear	Over Side	Over Rear	Over Side	Over Rear	Over Side	Over Rear	Over Side		
With front and rear stabilizers – Without using outriggers												
15 ft. (4.57 m)									5,500 (2500)	4,880 (2210)	4,070 (1850)	3,070 (1390)
10 ft. (3.05 m)					8,220 (3730)	7,410 (3360)		5,850 (2650)	4,540 (2060)	3,930 (1780)	2,930 (1330)	
5 ft. (1.52 m)					8,420 (3820)	6,510 (2950)		5,440 (2470)	4,130 (1870)	3,730 (1690)	2,740 (1240)	
Ground Line			7,190 (3260)	7,190 (3260)	7,830 (3550)	5,940 (2690)		5,110 (2320)	3,810 (1730)	3,560 (1620)	2,570 (1170)	
-5 ft. (-1.52 m)	6,970 (3160)	6,970 (3160)	13,690 (6210)	10,950 (4970)	7,620 (3460)	5,730 (2600)		4,940 (2240)	3,640 (1650)	3,480 (1580)	2,490 (1130)	
-10 ft. (-3.05 m)	14,250 (6460)	14,250 (6460)	14,650 (6650)	11,190 (5080)	7,670 (3480)	5,770 (2620)		4,950 (2250)	3,650 (1660)			
-15 ft. (-4.57 m)			15,170 (6880)	11,690 (5300)	7,950 (3610)	6,060 (2750)						
With front and rear stabilizers – Outriggers fully extended												
15 ft. (4.57 m)								5,500 (2500)	5,500 (2500)	4,460 (2020)	4,460 (2020)	
10 ft. (3.05 m)					8,220 (3730)	8,220 (3730)		6,900 (3130)	6,900 (3130)	5,990 (2720)	5,990 (2720)	
5 ft. (1.52 m)					11,960 (5430)	11,960 (5430)		8,640 (3920)	8,640 (3920)	7,230 (3280)	6,320 (2870)	
Ground Line			7,190 (3260)	7,190 (3260)	14,580 (6610)	14,050 (6370)		10,150 (4600)	8,790 (3990)	7,740 (3510)	6,130 (2780)	
-5 ft. (-1.52 m)	6,970 (3160)	6,970 (3160)	13,690 (6210)	13,690 (6210)	15,550 (7050)	13,800 (6260)		10,860 (4930)	8,600 (3900)	7,650 (3470)	6,040 (2740)	
-10 ft. (-3.05 m)	14,250 (6460)	14,250 (6460)	18,730 (8500)	18,730 (8500)	15,070 (6840)	13,850 (6280)		10,780 (4890)	8,610 (3910)			
-15 ft. (-4.57 m)			18,410 (8350)	18,410 (8350)	12,600 (5720)	12,600 (5720)						
With front stabilizers and rear blade – Without using outriggers												
15 ft. (4.57 m)								5,500 (2500)	4,840 (2200)	4,190 (1900)	3,040 (1380)	
10 ft. (3.05 m)					8,220 (3730)	7,350 (3470)		6,010 (2730)	4,490 (2040)	4,050 (1840)	2,900 (1320)	
5 ft. (1.52 m)					8,650 (3920)	6,450 (2930)		5,600 (2540)	4,090 (1860)	3,860 (1750)	2,700 (1220)	
Ground Line			7,190 (3260)	7,190 (3260)	8,060 (3660)	5,870 (2660)		5,270 (2390)	3,760 (1710)	3,690 (1670)	2,540 (1150)	
-5 ft. (-1.52 m)	6,970 (3160)	6,970 (3160)	13,690 (6210)	10,840 (4920)	7,850 (3560)	5,670 (2570)		5,100 (2310)	3,600 (1630)	3,610 (1640)	2,460 (1120)	
-10 ft. (-3.05 m)	14,250 (6460)	14,250 (6460)	15,060 (6830)	11,070 (5020)	7,900 (3580)	5,710 (2590)		5,110 (2320)	3,600 (1630)			
-15 ft. (-4.57 m)			15,570 (7060)	11,580 (5250)	8,190 (3720)	5,990 (2720)						
With front stabilizers and rear blade – Outriggers fully extended												
15 ft. (4.57 m)								5,500 (2500)	5,500 (2500)	4,460 (2020)	4,460 (2020)	
10 ft. (3.05 m)					8,220 (3730)	8,220 (3730)		6,900 (3130)	6,900 (3130)	5,990 (2720)	5,130 (2330)	
5 ft. (1.52 m)					11,960 (5430)	11,370 (5160)		8,640 (3920)	7,170 (3250)	7,230 (3280)	4,930 (2240)	
Ground Line			7,190 (3260)	7,190 (3260)	14,580 (6610)	10,710 (4860)		10,150 (4600)	6,810 (3090)	8,030 (3640)	4,750 (2150)	
-5 ft. (-1.52 m)	6,970 (3160)	6,970 (3160)	13,690 (6210)	13,690 (6210)	15,550 (7050)	10,470 (4750)		10,980 (4980)	6,630 (3010)	7,950 (3610)	4,660 (2110)	
-10 ft. (-3.05 m)	14,250 (6460)	14,250 (6460)	18,730 (8500)	18,730 (8500)	15,070 (6840)	10,520 (4770)		10,780 (4890)	6,640 (3010)			
-15 ft. (-4.57 m)			18,410 (8350)	18,410 (8350)	12,600 (5720)	10,850 (4920)						

## BUCKETS

A full line of buckets is offered to meet a wide variety of applications. The buckets have an adjustable bushing for side clearance, with the exception of the ditching bucket. Tooth selection includes either the John Deere Fangg<sup>®</sup> tooth or the ESCO Verticalok tooth. Replaceable cutting edges are available through John Deere parts. Optional side cutters add 4 inches (100 mm) to bucket widths.

Type Bucket	Bucket Width		Bucket Capacity*		Weight		Bucket Dig Force		Arm Dig Force 10 ft. 2 in. (3.1 m)		Bucket Tip Radius		No. Teeth
	in.	mm	cu. yd.	m <sup>3</sup>	lb.	kg	lb.	kN	lb.	kN	in.	mm	
General-Purpose	24	600	0.50	0.38	899	407	21,660	96.3	13,330	59.3	50.5	1283	4
Plate Lip	30	750	0.64	0.49	1,068	484	21,660	96.3	13,330	59.3	50.5	1283	4
	36	900	0.78	0.60	1,096	497	21,660	96.3	13,330	59.3	50.5	1283	5
	41**	1045**	0.75	0.57	1,050	475	18,965	84.4	12,800	56.9	57.7	1465	5
	42	1067	0.92	0.70	1,253	568	21,660	96.3	13,330	59.3	50.5	1283	6
	48	1220	1.06	0.81	1,399	634	21,660	96.3	13,330	59.3	50.5	1283	7
General-Purpose	24	600	0.59	0.45	1,106	501	19,710	87.7	12,955	57.6	55.5	1410	4
High Capacity	30	750	0.77	0.59	1,182	536	19,710	87.7	12,955	57.6	55.5	1410	4
	36	900	0.95	0.73	1,401	635	19,710	87.7	12,955	57.6	55.5	1410	5
	42	1067	1.12	0.86	1,590	721	19,710	87.7	12,955	57.6	55.5	1410	5
Heavy-Duty	24	600	0.59	0.45	1,390	630	19,710	87.7	12,955	57.6	55.5	1410	4
Plate Lip	30	750	0.77	0.59	1,481	671	19,710	87.7	12,955	57.6	55.5	1410	4
	36	900	0.95	0.73	1,558	706	19,710	87.7	12,955	57.6	55.5	1410	5
	42	1067	1.12	0.86	1,687	765	19,710	87.7	12,955	57.6	55.5	1410	5
Ditching	48	1220	0.74	0.57	848	384	29,565	131.5	14,465	64.3	37.0	940	0
	60	1500	0.90	0.69	959	435	29,565	131.5	14,465	64.3	37.0	940	0

\*All capacities are SAE heaped ratings.

\*\*With side cutters.

## COMPONENT WEIGHTS

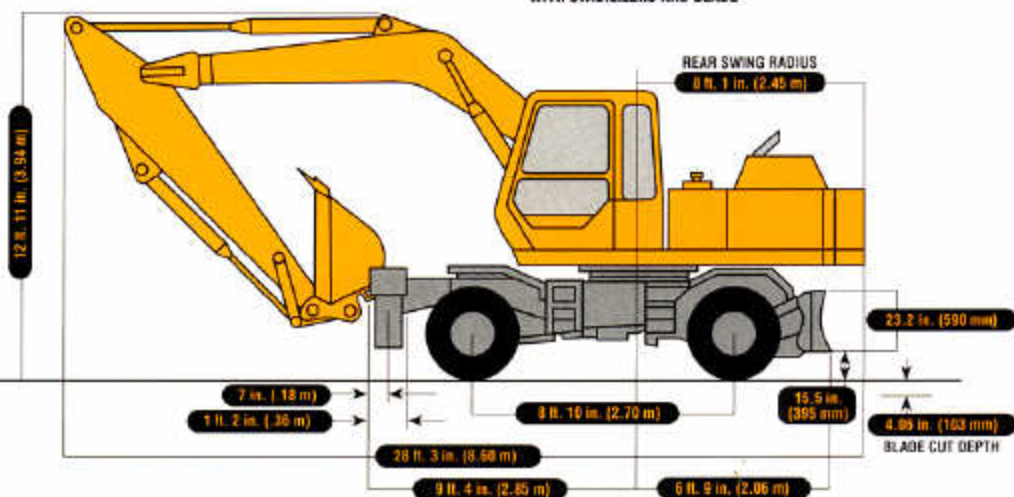
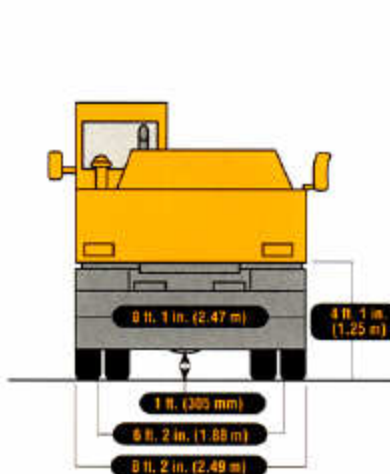
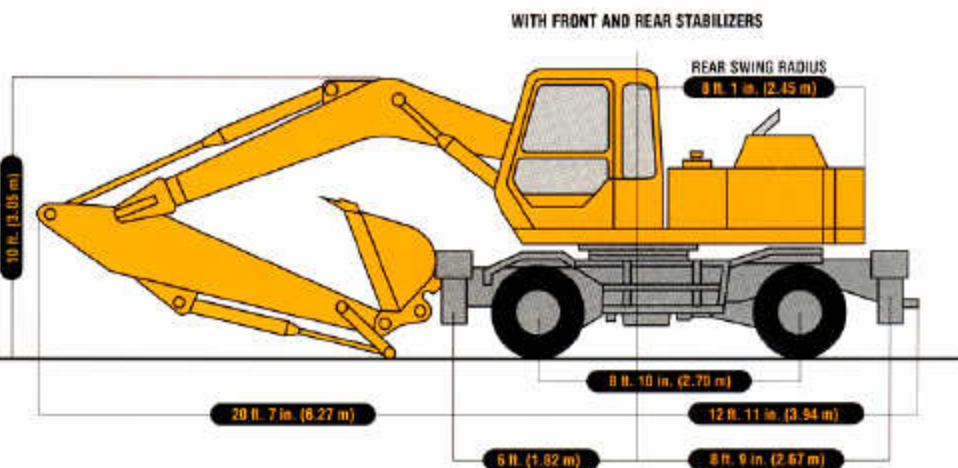
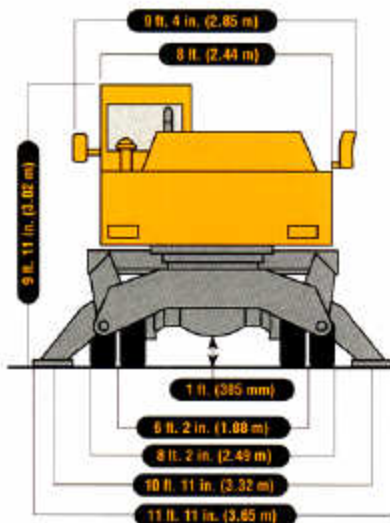
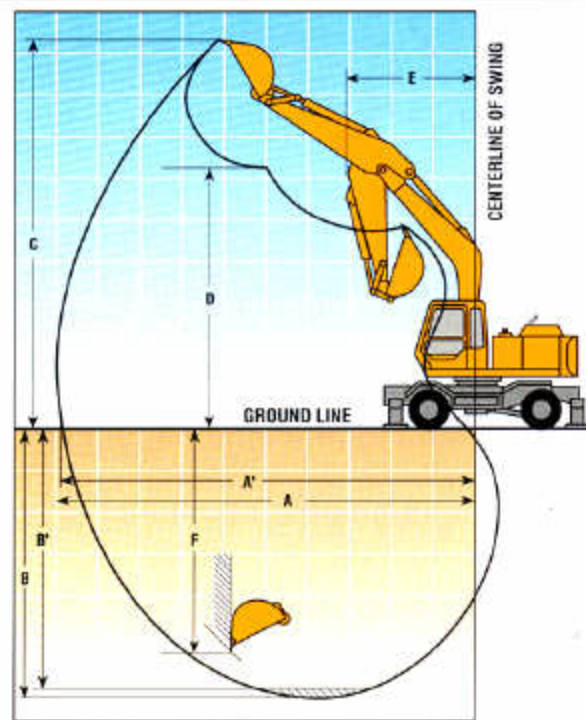
5950

Upperstructure with full fuel tank and 5,510-lb. (2500 kg) main counterweight (less front attachments).....	15,543 lb. (7050 kg)
Undercarriage equipped with	
Blade, two stabilizers, and tires.....	14,440 lb. (6550 kg)
Four stabilizers and tires.....	14,795 lb. (6710 kg)
Tires	
10.00-20.0, 14 PR dual (8).....	1,733 lb. (786 kg)
18.00-19.5, 18 PR single (4).....	1,420 (644 kg)
One-piece boom (with arm and boom cylinders).....	3,485 lb. (1581 kg)
Arm with bucket cylinder and linkage	
10 ft. 2 in. (3.1 m).....	1,808 lb. (820 kg)
Boom lift cylinders (2) total weight with linkage.....	705 lb. (320 kg)
Main counterweight.....	5,510 lb. (2500 kg)

## OPERATING INFORMATION

Arm Length  
10 ft. 2 in. (3.1 m)

<b>A</b> Maximum reach.....	31 ft. 4 in. (9.56 m)
<b>A'</b> Maximum reach @ ground level.....	30 ft. 8 in. (9.35 m)
<b>B</b> Maximum digging depth.....	20 ft. 8 in. (6.3 m)
<b>B'</b> Maximum digging depth @ 8-ft. (2.44 m) flat bottom.....	20 ft. 0 in. (6.09 m)
<b>C</b> Maximum cutting height.....	29 ft. 8 in. (9.03 m)
<b>D</b> Maximum dumping height.....	20 ft. 7 in. (6.28 m)
<b>E</b> Minimum swing radius.....	10 ft. 3 in. (3.13 m)
<b>F</b> Maximum vertical wall.....	17 ft. 11 in. (5.46 m)
<b>G</b> Tail swing radius.....	8 ft. 1 in. (2.45 m)



**ENGINE****5950**

Type	John Deere 4276T with altitude-compensating turbocharger
Rated power	
Dig mode	95 SAE net hp (71 kW) / 100 SAE gross hp (75 kW) @ 2,100 rpm
Travel mode	100 SAE net hp (75 kW) / 105 SAE gross hp (78 kW) @ 2,300 rpm
Cylinders	4
Displacement	276 cu. in. (4.524 L)
Maximum net torque	284 lb.-ft. (385 Nm) @ 1,300 rpm
Fuel consumption, typical	2 to 3 gal./hr. (7.5 to 11.5 L/h)
Cooling fan	suction type
Electrical system	24 volt with 42-amp alternator
Batteries (two 12 volt)	reserve capacity: 180 min.

**HYDRAULIC SYSTEM**

Main pumps	2 variable-displacement axial-piston open center
Maximum rated flow	2 x 44.1 gpm (2 x 167 L/min.)
Pressure setting	4,620 psi (31 860 kPa)
Pilot pump	one gear
Maximum rated flow	6.6 gpm (25 L/min.)
Pressure setting	570 psi (3930 kPa)
Steering pump	one gear
Maximum rated flow	7.93 gpm (30.0 L/min.)
Pressure setting	1,778 psi (12 260 kPa)
System operating pressure	
Travel circuits	4,620 psi (31 860 kPa)
Front-end circuits	4,050 psi (27 920 kPa)
Circuit relief valves	
Boom circuits	4,270 psi (29 440 kPa)
Arm circuits	4,270 psi (29 440 kPa)
Bucket circuits	4,270 psi (29 440 kPa)
Stabilizer circuits	4,050 psi (27 920 kPa)
Cross-over relief valves	
Travel circuits	4,690 psi (32 340 kPa)
Swing circuits	3,560 psi (24 540 kPa)

**STEERING**

Minimum turning radius with 10 ft. 2 in. (3.1 m) arm	23 ft. 7 in. (7.14 m)
--	-----------------------

**SWING MECHANISM**

Swing speed	0-14.5 rpm
-------------	------------

**UNDERCARRIAGE**

Drive system	
Low-speed range	all-wheel drive
High-speed range	rear-wheel drive
Transmission	constant mesh with low- and high-speed range
Front axle oscillation	12.4 deg.
Travel speed	
Low	0-5.6 mph (0-9.0 km/h)
High	0-18.6 mph (0-30.0 km/h)
Maximum traction force	
Low	19,800 lb. (88.1 kN) (9000 kg)
High	5,950 lb. (26.5 kN) (2700 kg)
Tractive gradability	65% (33 deg.)

**CAPACITIES**

Fuel tank	66.1 gal. (250 L)
Cooling system	5.5 gal. (21 L)
Engine lubrication, including filter	3.5 gal. (13 L)
Transmission	1.7 gal. (6.3 L)
Axle case	
Front	1.85 gal. (7 L)
Rear	2.9 gal. (11 L)
Wheel gear reduction (each)	0.61 gal. (2.3 L)
Hydraulic system	52.9 gal. (200 L)
Hydraulic tank	34.4 gal. (130 L)
Swing drive	1.3 gal. (5 L)

**OPERATING WEIGHTS**

With full fuel tank; 175-lb. (79 kg) operator; 10.00-20.0, 14 PR dual tires; 10 ft. 2 in. (3.1 m) arm; 0.75-cu. yd. (0.57 m <sup>3</sup> ) bucket; and fenders	
With blade and two stabilizers	36,222 lb. (16 430 kg)
Front axle	16,469 lb. (7470 kg)
Rear axle	19,754 lb. (8960 kg)
With four stabilizers	36,575 lb. (16 590 kg)
Front axle	16,888 lb. (7660 kg)
Rear axle	19,688 lb. (8930 kg)



*Convenient, low-effort controls give you precise, smooth operation. To save fuel, engine speed is reduced to 1,400 rpm when a hydraulic function is not used for four seconds.*



*The standard auxiliary valve and circuit let you install attachments fast.*

*Front axle oscillates 12 degrees for smooth moves in rough terrain. A hydraulic lock secures the axle for solid footing when digging.*



*Choose from 16 John Deere general-purpose, heavy-duty, and ditching buckets. They feature heavy-duty reinforced beams, T-1 steel sidecutters, two-piece moldboard, and heavy-duty wear strips.*

*Quiet comfort. The roomy, well-ventilated operator station lets you concentrate on the job at hand. Fatiguing vibration is reduced because the cab is isolation-mounted. Both cab and engine compartments are also lined with sound-deadening insulation. The cloth-covered seat is fully adjustable. Visibility is excellent – especially to the trench. Dual rear-view mirrors are standard. Vital machine functions are monitored electronically with both visual and electronic alarms. A large 13,500 Btu/hr (4.1 kW) heater is standard.*

*Fanggs® teeth are featured on every bucket. Due to their unique profile, Fanggs teeth dig with 23 percent less effort for faster bucket fill and better bucket control.*

	5950		5950		5950
<b>ENGINE</b>					
Auto-idle system	●	Right front mirror	●	Axle lock indicator light	●
Batteries (two 12 volt), 180-min. (1,250 CCA) reserve capacity	●	Vandal locks with ignition key	●	Engine air cleaner restriction indicator light	●
Dual element dry-type air filter	●	Cab door	●	Engine coolant temperature indicator light with audible alarm	●
Electric ether starting aid	●	Fuel cap	●	Engine oil pressure indicator light with audible alarm	●
Enclosed fan guard	●	Service doors	●	Fluid level	●
Conforms to SAE J1308	●			Engine coolant level indicator light	●
Engine coolant to -34°F (-37°C)	●	<b>FRONT ATTACHMENTS</b>		Hydraulic oil level indicator light	●
Full-flow oil filter	●	Arm, 10 ft. 2 in. (3.1 m)	●	Hazard indicator light	●
Isolation mounted	●	Bucket-to-arm clearance adjustable bushing	●	High beam indicator light	●
John Deere quick release fuel filter	●	Centralized lubrication system	●	Low alternator charge indicator light	●
Radiator trash screen	●	Dirt seals on all bucket pins	●	Low fuel indicator light	●
Underhood muffler with vertical curved end exhaust stack	●	Boom and cylinders with plumbing to mainframe	●	Park brake indicator light	●
		Buckets	●	Service brake indicator light	●
		General purpose	●	Turn indicator lights	●
		Heavy duty	●	Work-lights-on indicator light	●
		High capacity	●	Motion alarm with cancel switch	●
		Side cutters and teeth	●	Conforms to SAE J994	●
		No-boom-arm option	■	Seat belt, 2 in. (51 mm)	●
<b>HYDRAULIC SYSTEM</b>				Throttle	●
Auxiliary hydraulic valve section with foot control	●	<b>OPERATOR'S STATION</b>		Positive-position hand control	●
Hydraulic filter restriction indicator kit	■	Clock	●	Foot control	●
		Deluxe cloth seat with adjustable armrests	●	Tinted glass	●
		Front windshield wiper and washer	●	Defroster fan	●
		Constant speed	●	Window vandal protection covers	■
		Gauges (illuminated)	●	24- to 12-volt D.C. radio converters	■
		Air pressure	●		
		Engine coolant	●	<b>ELECTRICAL</b>	
		Fuel	●	By-pass start safety cover on starter	●
		Heater, 13,500 Btu/hr (4.1 kW) with blower fan	●	Glass fuses	●
		Heater, 20,000 Btu/hr (5.9 kW)	■	Positive terminal battery covers	●
		Horn, electric	■		
		Hourmeter, electric	●	<b>LIGHTS</b>	
		Interior light	●	Park lights	●
		Mode selectors	■	Taillights	●
		Power modes - three	●	Work lights	●
		Travel modes - two	●	Halogen	●
		Monitor system with alarm features	●	One mounted on boom	●
		Air pressure indicator light with audible alarm	●	Two mounted on frame	●
		Auto-idle indicator light	●		
<b>UNDERCARRIAGE</b>					
Axle, oscillating front with locking hydraulic cylinders	●				
Hydrostatic propel system with high-low range transmission	●				
Parking brake, spring applied, air released	●				
Service brakes, air-over-hydraulic internal expanding shoes	●				
Stabilizers	●				
Four, less blade	●				
Two, with blade	■				
Tires	●				
10.00-20, 14 PR dual (8)	●				
18.00-19.5, 18 PR single (4)	●				
<b>UPPERSTRUCTURE</b>					
Air compressor, 100 psi (690 kPa), 15 CFM (700 m <sup>3</sup> /sec.)	●				
Fully-enclosed swing gears	●				
Right- and left-hand mirrors	●				

**KEY:** ● Standard equipment ■ Optional or special equipment

See your John Deere dealer for further information.

## THE JDAdvantEDGE

JDAdvantEdge is a wealth of support programs, parts systems, and dealer resources, all designed to give you the edge. This package of special benefits is a major reason why John Deere offers the "best value" for your equipment dollar.

**Best parts support** - Twelve regional parts depots in North America and others around the world put parts support near your job no matter where in the world it is.

A computerized FLASH<sup>SM</sup> parts locating system linking these depots to dealerships can find out-of-stock parts in a hurry and get them into your hands fast. Usually within 24 hours.

**Best service backup** - Dealer service technicians are regularly schooled, at our modern facility in Davenport, Iowa, or by professionals in the field, to diagnose quickly and repair efficiently.

If they're stumped, a phone call to DTAC (Dealer Technical Assistance Center) puts them in touch with a staff of pros at the factory who help them find a solution quickly.

**Best dealers** - Your John Deere dealer is an important contributor to the JDAdvantEdge. He or she is committed to being the best equipment supplier you can work with.

This is a dollars-and-cents commitment in parts inventory, in service facilities, in field-service trucks. It's a sweat-and-blood commitment in dedicated, skilled, and highly trained and motivated personnel in each and every department at the dealership.

But what sets John Deere dealers apart from all the rest is something more, a factor somewhat difficult to measure ... a caring attitude, and a sincere desire to be the best at meeting the needs of each individual customer.

**John Deere Finance Plans** - Whether you rent, lease, or buy John Deere equipment, your dealer can explain the John Deere options available. One-stop options that let you free up operating capital, keep other lines of credit open. More solid benefits of the JDAdvantEdge.

**Best protection** - In addition to the new equipment warranty that meets or exceeds the competition, SECURE<sup>®</sup> extended coverage, an optional service product for John Deere equipment, is available for repair coverage after the warranty concludes. Full machine or power train coverage is available for a variety of time periods to meet your needs. Consult your dealer for availability and details.



Net engine power is with standard equipment including air cleaner, exhaust system, alternator, and cooling fan, at standard conditions per SAE J1349 and DIN 70 020, using No. 2-D fuel at 35 API gravity. No derating is required up to 10,000 ft. (3050 m) altitude. Gross power is without cooling fan.

Specifications and design subject to change without notice. Wherever applicable, specifications are in accordance with PCSA and SAE standards. Except where otherwise noted, these specifications are based on a unit with full fuel tank, 175-lb. (79-kg) operator, and standard equipment.

