



# 350D/6305 BULLDOZER

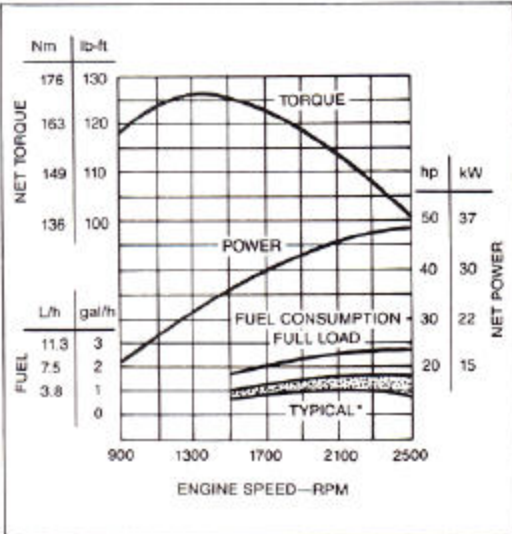
## FEATURES

- 48 SAE net hp (36 kW)
- Single lever controls all dozer functions
- Hydraulic track adjustment
- Self-adjusting, oil-cooled steering clutches and brakes
- Walk-through compartment
- Hydraulic direction reverser
- Vandal protection
- Roll-over protective structure (ROPS)

## ADD VERSATILITY WITH:

- Winch
- Fairlead and drawbar
- Integral log arch
- Ripper
- Backhoe
- Sideboom

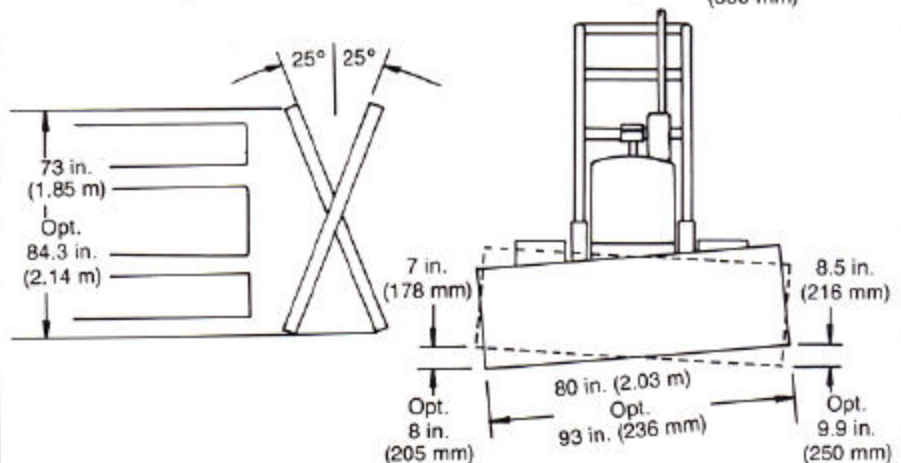
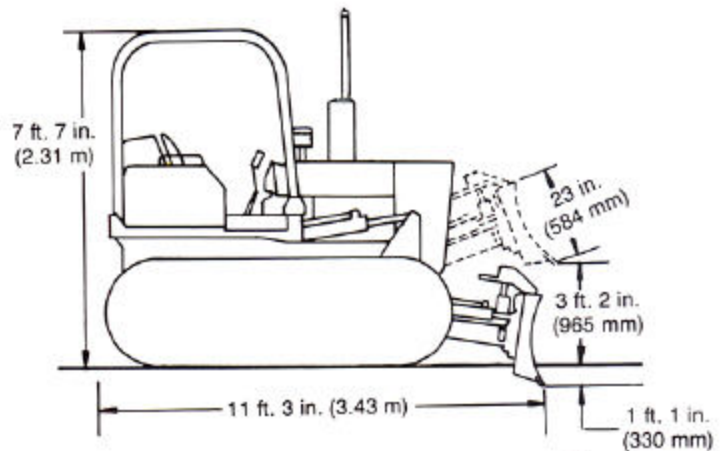
## ENGINE PERFORMANCE



\* Depending on operating variables



Model shown may include options



TED B. ARNOLD CO. INC.  
Hwy 93 S.W.  
P.O. Box 430  
Gering, Nebr. 69341

# 350D/6305 BULL DOZER SPECIFICATIONS

Specifications and design are subject to change without notice. Wherever applicable, specifications are in accordance with SAE Standards. Except where otherwise noted, these specifications are based on a unit with diesel engine, roll-over protective structure, full fuel tank, 175-lb. (80 kg) operator and standard equipment.

Rated Power @ 2500 rpm:	SAE	DIN 6270
Net	48 hp (36 kW)	36 kW
Gross	50 hp (37 kW)	
Drawbar	34 hp (25 kW)	

Net engine power is with standard equipment including air cleaner, exhaust system, alternator, and cooling fan, at standard conditions per SAE J1349 and DIN 6270, using No.2-D fuel @ 35 API gravity. Gross power is without cooling fan.

## Engine: John Deere 3-179D

Type	4-stroke cycle, naturally aspirated diesel
Bore and stroke	4.19 x 4.33 in. (106.5 x 110 mm)
No. of cylinders	3
Displacement	179 cu. in. (2.934 L)
Maximum net torque @ 1300 rpm	126 lb-ft (171 Nm) (17.4 kg-m)
Torque rise	25 percent
Cooling fan	Blower
Compression ratio	17.8 to 1
Main bearings	4
Lubrication	Pressure system w/full-flow filters
Dual-stage aspirated air cleaner	
w/restriction indicator	Dry
Electrical system	12-volt w/alternator
Battery (12 volt)	Reserve capacity: 180 minutes

**Transmission** ..... Selective sliding gear

**Hydraulic Direction Reverser** Multiple-disk oil clutches

Gear	Travel Speeds		Maximum Drawbar Pull (with adequate weight and traction)		
	mph	km/h	lb.	kN	kg
Rev. or Fwd.					
1st	1.4	2.3	11,700	52.0	5310
2nd	1.9	3.1	8,300	36.9	3770
3rd	3.3	5.3	4,700	20.9	2130
4th	6.5	10.5	1,800	8.0	820

## Steering:

Steering clutches and brakes are controlled by a single lever for each track. A pedal provides braking, and lockdown for parking.  
 Clutches ..... Oil-cooled, hydraulically actuated multiple-disk; 9-in. (228 mm) disks; 16 friction surfaces per clutch.  
 Brakes Self-adjusting, self-energizing, oil-cooled contracting band with bonded lining.

## Hydraulic System:

Control	Single "T-bar", triple hydraulic system
Pump	Gear, 15 or 23 gpm (0.9 or 1.45 L/s)
Pressure	2250 psi (15 514 kPa) (158.2 kg/cm <sup>2</sup> )

Hydraulic Cylinders:	Bore	Stroke
Lift, two	3 in. (76 mm)	12.125 in. (308 mm)
Angle, two	3 in. (76 mm)	13.375 in. (340 mm)
Tilt, one	2.5 in. (64 mm)	7 in. (178 mm)
Cylinder rods	Ground, heat-treated, chrome-plated, polished	
Cylinder pivot pins	Hardened steel (replaceable bushings)	

## Tracks (5-roller track frames w/rock guards):

Grouser	14 in. (356 mm)
Track shoes, each side	36
Ground contact area	1939 sq. in. (12 510 cm <sup>2</sup> )
Ground pressure	5.5 psi (37.9 kPa) (0.387 kg/cm <sup>2</sup> )
Length of track on ground	69.3 in. (1.76 m)
Track gauge, standard	48 in. (1.22 m)
Carrier roller	1
Adjustment	Hydraulic
Clearance at rear crossbar	13.25 in. (337 mm)

## Blade: Reinforced, box-welded

Cutting edge	3-piece, reversible, replaceable
Center section	0.5 in. (12.7 mm)
End bits	0.625 in. (15.8 mm)

## Capacities:

	U.S.	Liters
Cooling system	3.25 gal.	12.3
Fuel tank	22 gal.	83
Crankcase, including filter	9 qt.	8.5
Transmission—steering clutch housings and final drives	10 gal.	38
Direction reverser	12 qt.	11.3
Hydraulic reservoir	6.4 gal.	24.2
Hydraulic system	9 gal.	34

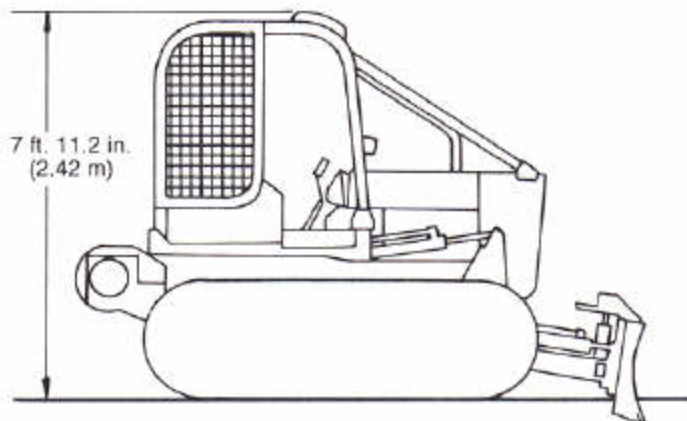
## Additional Standard Equipment:

Adjustable seat w/armrests  
 Electric hourmeter  
 Engine sideshields  
 Front hitch  
 Front/rear bottom guard  
 Horn  
 Key switch w/pushbutton start  
 ROPS w/canopy and seat belt  
 Precleaner  
 Transistorized voltage regulator  
 Vandal protection

**SAE Operating Weight w/ROPS** ..... 10,600 lb. (4810 kg)

## Special Equipment:

Auxiliary control valve  
 Brush screens  
 Cab (includes ROPS)  
 Dozer counterweight  
 Ether starting aid  
 Final drive guards  
 Inner sprocket shields  
 Lights  
 Limb risers and overhead exhaust  
 Master electrical disconnect switch  
 PTO (540 rpm)  
 Remote cylinder and lines  
 Spark-arresting muffler  
 Swinging drawbar  
 Three-point hitch  
 Trash-resistant radiator  
 Two batteries  
 Winch drive  
 10-in. (254 mm) rubber shoes  
 14-in. (356 mm) open-center grouser shoes



Limb risers and brush-protection assembly for roll-over protective structure