



350D WIDE-TRACK BULLDOZER

FEATURES

48 SAE net hp (36 kW)

Ground pressure 2.7 psi (18.6 kPa)
(0.189 kg/cm²)

Single lever controls all dozer functions

Hydraulic track adjustment

High flotation

Track-width dozer blade

Self-adjusting, oil-cooled steering clutches
and brakes

Excellent side-hill stability

Walk-through compartment

Hydraulic direction reverser

Vandal protection

Roll-over protective structure (ROPS)

Convertible to regular
track equipment

ADD VERSATILITY WITH:

Winch

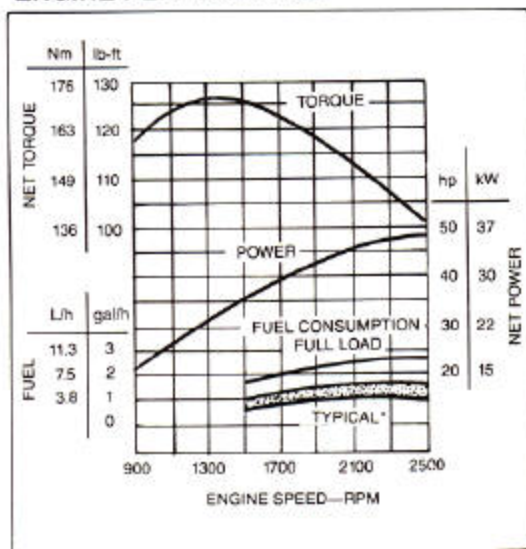
Fairlead and drawbar

Backhoe



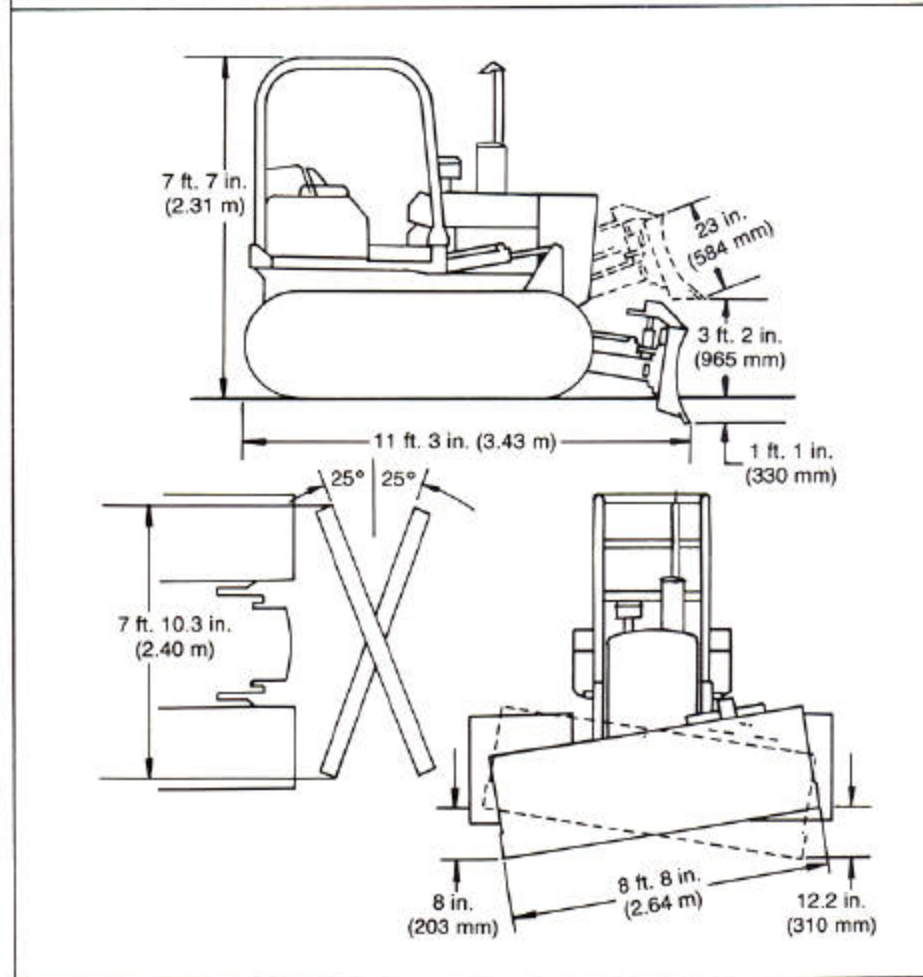
Model shown may include options

ENGINE PERFORMANCE



* Depending on operating variables

Note: The 350D Wide-Track Bulldozer is designed to work in mud, snow or other soft ground conditions. Frequent misapplication in rocky or hard ground will decrease undercarriage life and may cause component damage.



350D WIDE-TRACK DOZER SPECIFICATIONS

Specifications and design are subject to change without notice. Wherever applicable, specifications are in accordance with SAE Standards. Except where otherwise noted, these specifications are based on a unit with diesel engine, roll-over protective structure, full fuel tank, 175-lb. (80 kg) operator and standard equipment.

| | | |
|--------------------------------|---------------|-----------------|
| Rated Power @ 2500 rpm: | SAE | DIN 6270 |
| Net | 48 hp (36 kW) | 36 kW |
| Gross | 50 hp (37 kW) | |
| Drawbar | 34 hp (25 kW) | |

Net engine power is with standard equipment including air cleaner, exhaust system, alternator, and cooling fan, at standard conditions per SAE J1349 and DIN 6270, using No. 2-D fuel @ 35 API gravity. No derating is required up to 10,000 feet (3050 m) altitude. Gross power is without cooling fan.

Engine: John Deere 3-179D

| | |
|--|--|
| Type | 4-stroke cycle, naturally aspirated diesel |
| Bore and stroke | 4.19 x 4.33 in. (106.5 x 110 mm) |
| No. of cylinders | 3 |
| Displacement | 179 cu. in. (2.934 L) |
| Maximum net torque @ 1300 rpm | 126 lb-ft (171 Nm) (17.4 kg-m) |
| Torque rise | 25 percent |
| Cooling fan | Blower |
| Compression ratio | 17.8 to 1 |
| Main bearings | 4 |
| Lubrication | Pressure system w/full-flow filters |
| Dual-stage aspirated air cleaner | |
| w/restriction indicator | Dry |
| Electrical system | 12-volt w/alternator |
| Battery (12 volt) | Reserve capacity: 180 minutes |

Transmission Selective sliding gear

Hydraulic Direction Reverser Multiple-disk oil clutches

| Gear: Rev. or Fwd. | Travel Speeds | |
|-----------------------|---------------|------|
| | mph | km/h |
| 1st | 1.4 | 2.3 |
| 2nd | 1.9 | 3.1 |
| 3rd | 3.3 | 5.3 |
| 4th | 6.5 | 10.4 |

Steering:

Steering clutches and brakes are controlled by a single lever for each track. A pedal provides braking, and lockdown for parking.

Clutches Oil-cooled, hydraulically actuated, multiple-disk; 9-in. (228 mm) disks; 16 friction surfaces per clutch.

Brakes Self-adjusting, self-energizing, oil-cooled contracting band with bonded lining.

Hydraulic System:

| | |
|----------------|---|
| Control | Single "T-bar", triple hydraulic system |
| Pump | Gear, 15 or 23 gpm (0.9 or 1.45 L/s) |
| Pressure | 2250 psi (15 514 kPa) (158.2 kg/cm ²) |

| | | |
|-----------------------------|---|---------------------|
| Hydraulic Cylinders: | Bore | Stroke |
| Lift, two | 3 in. (76 mm) | 12.125 in. (308 mm) |
| Angle, two | 3 in. (76 mm) | 13.375 in. (340 mm) |
| Tilt, one | 2.5 in. (64 mm) | 7 in. (178 mm) |
| Cylinder rods | Ground, heat-treated, chrome-plated, polished | |
| Cylinder pivot pins | Hardened steel (replaceable bushings) | |

Tracks (5-roller track frames w/rock guards):

| | |
|----------------------------------|--|
| Wide-track grouser | 33 in. (838 mm) |
| Track shoes, each side | 36 |
| Ground contact area | 4574 sq. in. (29 510 cm ²) |
| Ground pressure | 2.7 psi (18.6 kPa) (0.189 kg/cm ²) |
| Length of track on ground | 69.3 in. (1.76 m) |
| Track gauge | 68 in. (1.73 m) |
| Carrier roller | 1 |
| Adjustment | Hydraulic |
| Clearance at rear crossbar | 13.25 in. (337 mm) |

Blade: Reinforced, box-welded

| | |
|----------------------|----------------------------------|
| Cutting edge | 3-piece, reversible, replaceable |
| Center section | 0.5 in. (12.7 mm) |
| End bits | 0.625 in. (15.8 mm) |

Capacities:

| | U.S. | Liters |
|------------------------------------|-------------|---------------|
| Cooling system | 3.25 gal. | 12.3 |
| Fuel tank | 22 gal. | 83.0 |
| Crankcase, including filter | 9 qt. | 8.5 |
| Transmission—steering clutch | | |
| housings and final drives | 10 gal. | 38.0 |
| Direction reverser | 12 qt. | 11.3 |
| Hydraulic reservoir | 6.4 gal. | 24.5 |
| Hydraulic system | 9 gal. | 34.1 |

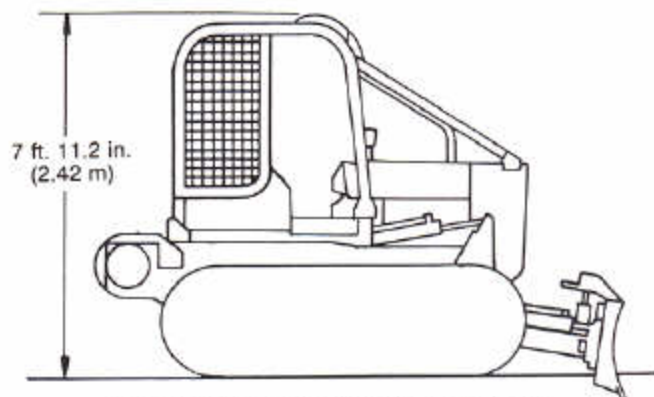
Additional Standard Equipment:

Adjustable seat w/armrests
 Electric hourmeter
 Engine sideshields
 Front hitch
 Front/rear bottom guard
 Horn
 Key switch w/pushbutton start
 Precleaner
 ROPS w/canopy and seat belt
 Transistorized voltage regulator
 Vandal protection

SAE Operating Weight w/ROPS 12,050 lb. (5465 kg)

Special Equipment:

Auxiliary control valve
 Brush screens
 Cab (includes ROPS)
 Dozer counterweight
 Ether starting aid
 Final drive guards
 Lights
 Limb riser and overhead exhaust
 Master electrical disconnect switch
 PTO (540 rpm)
 Remote cylinder and lines
 Spark-arresting muffler
 Swinging drawbar
 Three-point hitch
 Trash-resistant radiator
 Two batteries
 Winch drive



Limb risers and brush-protection assembly for roll-over protective structure